

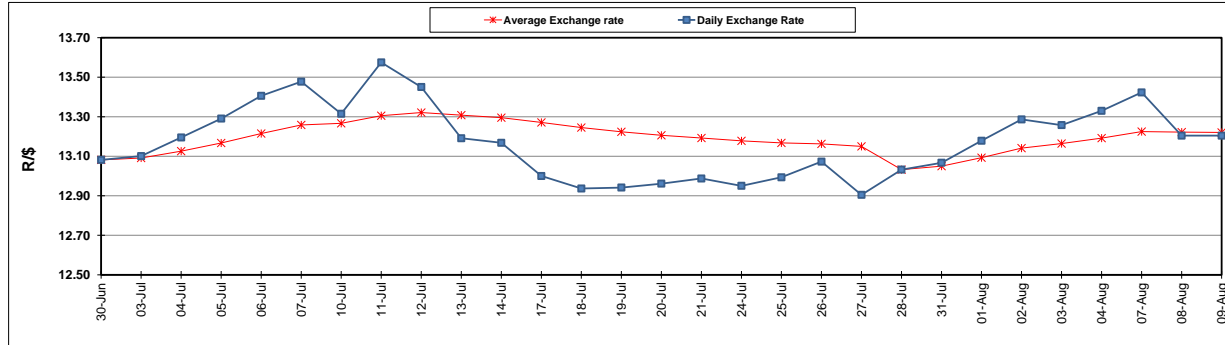
|  | PETROL 95<br>ULP | PETROL 93<br>ULP & LRP | DIESEL<br>0.05% | DIESEL<br>0.005% | ILL. PAR. |
|--|------------------|------------------------|-----------------|------------------|-----------|
| GAUTENG PUMP PRICE (SA c/l) AS FROM 02/08/2017                     | 1 305.000        | 1 282.000              | -               | -                | -         |
| WHOLESALE PRICE (SA c/l) AS FROM 02/08/2017                        | -                | -                      | 1 126.330       | 1 131.730        | 683.088   |
| SINGLE NATIONAL MAXIMUM RETAIL PRICE                               | -                | -                      | -               | -                | 876.000   |
| BASIC FUEL PRICE - 09/08/2017 (SA c/l)                             | 580.435          | 564.229                | 555.872         | 562.796          | 559.512   |
| PRESS RELEASE CONTRIBUTION TO BFP 02/08/2017 - 09/08/2017 (SA c/l) | 523.670          | 510.670                | 514.630         | 520.030          | 512.128   |
| UNIT OVER/(UNDER) RECOVERY (SA c/l) - 09/08/2017                   | (56.765)         | (53.559)               | (41.242)        | (42.766)         | (47.384)  |
| AVERAGE BASIC FUEL PRICE 28/07/2017 - 09/08/2017                   | 579.564          | 564.110                | 561.553         | 568.268          | 561.791   |
| AVERAGE UNIT OVER/(UNDER) RECOVERY 28/07/2017 - 09/08/2017         | (62.227)         | (59.773)               | (56.590)        | (58.238)         | (58.329)  |

### ANALYSIS MOVEMENT OF AVERAGE OVER/(UNDER) RECOVERY

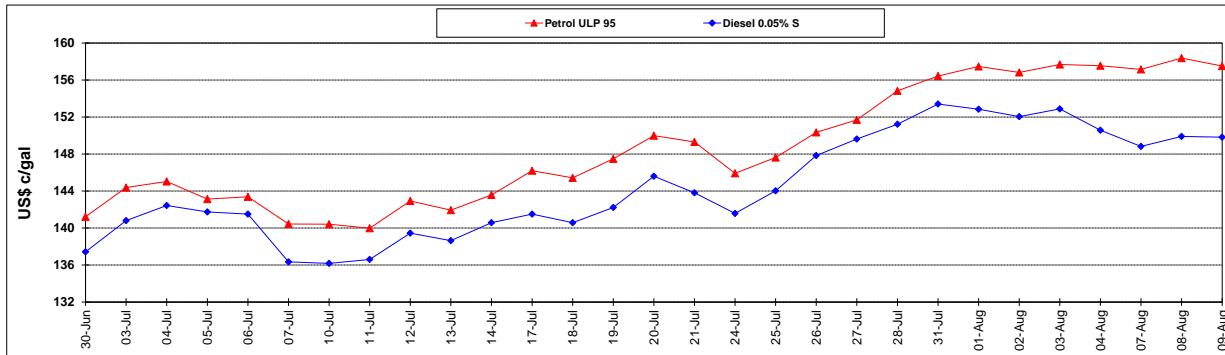
|  | PETROL 95 | PETROL 93 | DIESEL 0.05% | DIESEL 0.005% | ILL. PAR. |
|--|-----------|-----------|--------------|---------------|-----------|
| - MOVEMENT IN INTERNATIONAL PRODUCT PRICES                 | (59.141)  | (56.769)  | (53.600)     | (55.212)      | (55.338)  |
| - MOVEMENT IN EXCHANGE RATE                                | (3.086)   | (3.004)   | (2.990)      | (3.026)       | (2.992)   |
| AVERAGE UNIT OVER/(UNDER) RECOVERY 28/07/2017 - 09/08/2017 | (62.227)  | (59.773)  | (56.590)     | (58.238)      | (58.329)  |

R/\$ EXCHANGE RATE - (R/\$ 13.2045- 09/08/2017)

### EXCHANGE RATE USED IN BASIC FUEL PRICE



### INTERNATIONAL PRODUCT PRICES OF BASKET USED IN BASIC FUEL PRICE



### BASIC FUEL PRICE IN SA CENTS PER LITRE

