

UPDATE OF THE BASIC FUEL PRICE

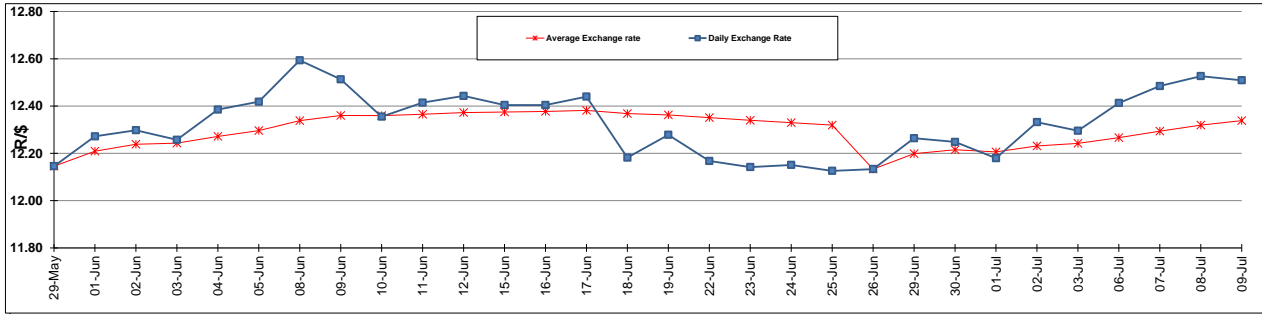
	PETROL 95 ULP	PETROL 93 ULP & LRP	DIESEL 0.05%	DIESEL 0.005%	ILL. PAR.
GAUTENG PUMP PRICE (SA c/l) AS FROM 01/07/2015	1,377.000	1,352.000	-	-	-
WHOLESALE PRICE (SA c/l) AS FROM 01/07/2015	-	-	1,170.790	1,174.190	786.828
SINGLE NATIONAL MAXIMUM RETAIL PRICE	-	-	-	-	1,014.000
BASIC FUEL PRICE - 09/07/2015 (SA c/l)	684.299	667.441	575.771	580.241	561.591
PRESS RELEASE CONTRIBUTION TO BFP 01/07/2015 - 09/07/2015 (SA c/l)	703.650	688.650	642.630	646.030	629.128
UNIT OVER/(UNDER) RECOVERY (SA c/l) - 09/07/2015	19.351	21.209	66.859	65.789	67.537
AVERAGE BASIC FUEL PRICE 26/06/2015 - 09/07/2015	665.669	650.109	591.615	597.939	581.208
AVERAGE UNIT OVER/(UNDER) RECOVERY 26/06/2015 - 09/07/2015	25.681	25.341	49.816	46.891	46.120

ANALYSIS MOVEMENT OF AVERAGE OVER/(UNDER) RECOVERY

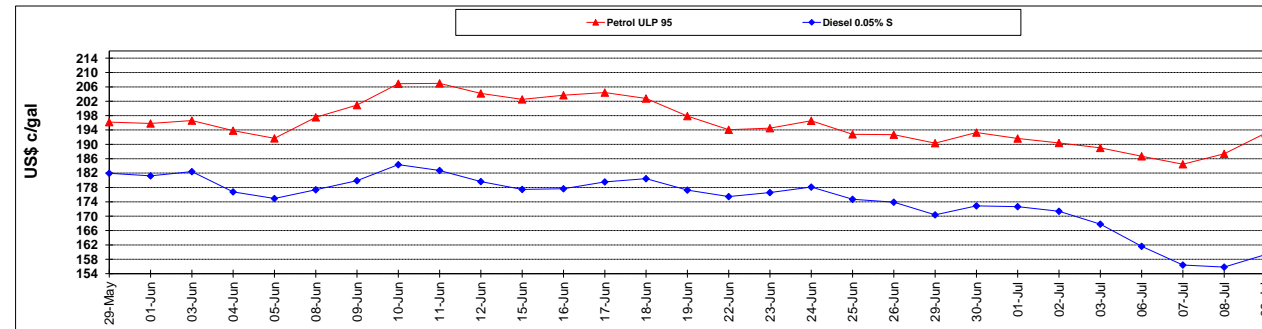
	PETROL 95	PETROL 93	DIESEL 0.05%	DIESEL 0.005%	ILL. PAR.
- MOVEMENT IN INTERNATIONAL PRODUCT PRICES	26.706	26.342	50.726	47.812	47.015
- MOVEMENT IN EXCHANGE RATE	(1.025)	(1.001)	(0.911)	(0.921)	(0.895)
AVERAGE UNIT OVER/(UNDER) RECOVERY 26/06/2015 - 09/07/2015	25.681	25.341	49.816	46.891	46.120

R/\$ EXCHANGE RATE - (R/\$ 12.5090 - 09/07/2015)

EXCHANGE RATE USED IN BASIC FUEL PRICE



INTERNATIONAL PRODUCT PRICES OF BASKET USED IN BASIC FUEL PRICE



BASIC FUEL PRICE IN SA CENTS PER LITRE

