

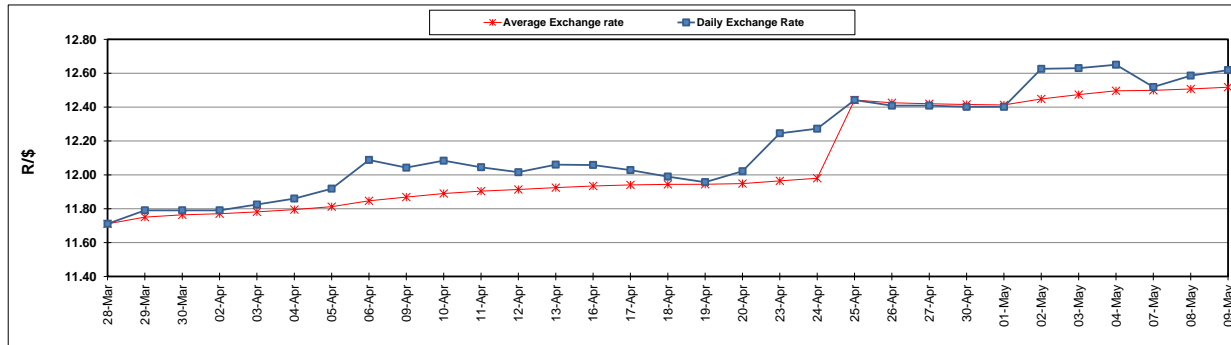
	PETROL 95 ULP	PETROL 93 ULP & LRP	DIESEL 0.05%	DIESEL 0.005%	ILL. PAR.
GAUTENG PUMP PRICE (SA c/l) AS FROM 02/05/2018	1 497.000	1 472.000	-	-	-
WHOLESALE PRICE (SA c/l) AS FROM 02/05/2018	-	-	1 333.830	1 338.230	845.088
SINGLE NATIONAL MAXIMUM RETAIL PRICE	-	-	-	-	1 089.000
BASIC FUEL PRICE - 09/05/2018 (SA c/l)	721.339	708.736	742.961	749.665	751.710
PRESS RELEASE CONTRIBUTION TO BFP 02/05/2018 - 09/05/2018 (SA c/l)	645.070	630.070	660.630	665.030	672.128
UNIT OVER/(UNDER) RECOVERY - 09/05/2018 (SA c/l)	(76.269)	(78.666)	(82.331)	(84.635)	(79.582)
AVERAGE BASIC FUEL PRICE 25/04/2018 - 09/05/2018	695.946	682.646	716.564	722.293	729.638
AVERAGE UNIT OVER/(UNDER) RECOVERY 25/04/2018 - 09/05/2018	(73.149)	(74.849)	(82.753)	(83.627)	(81.146)

ANALYSIS MOVEMENT OF AVERAGE OVER/(UNDER) RECOVERY

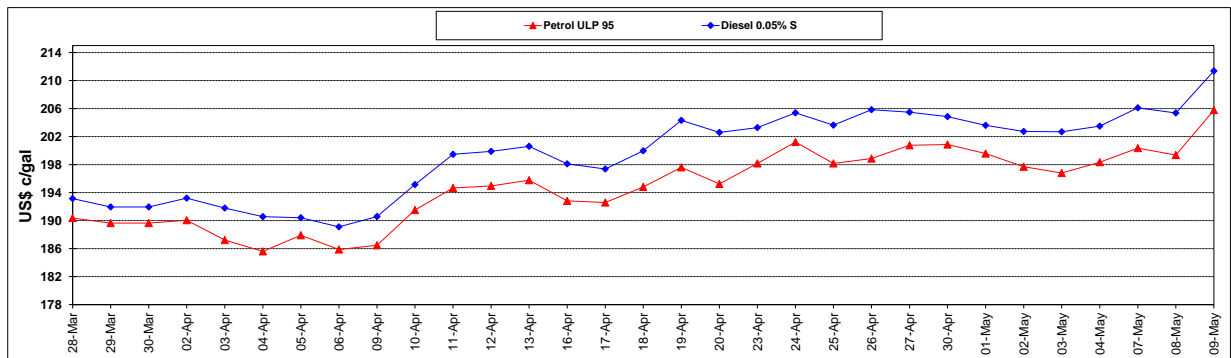
	PETROL 95	PETROL 93	DIESEL 0.05%	DIESEL 0.005%	ILL. PAR.
- MOVEMENT IN INTERNATIONAL PRODUCT PRICES	(43.254)	(45.525)	(51.971)	(52.600)	(49.804)
- MOVEMENT IN EXCHANGE RATE	(29.895)	(29.324)	(30.781)	(31.027)	(31.342)
AVERAGE UNIT OVER/(UNDER) RECOVERY 25/04/2018 - 09/05/2018	(73.149)	(74.849)	(82.753)	(83.627)	(81.146)

R/\$ EXCHANGE RATE - (R/\$12.6185 - 09/05/2018)

EXCHANGE RATE USED IN BASIC FUEL PRICE



INTERNATIONAL PRODUCT PRICES OF BASKET USED IN BASIC FUEL PRICE



BASIC FUEL PRICE IN SA CENTS PER LITRE

