

UPDATE OF THE BASIC FUEL PRICE

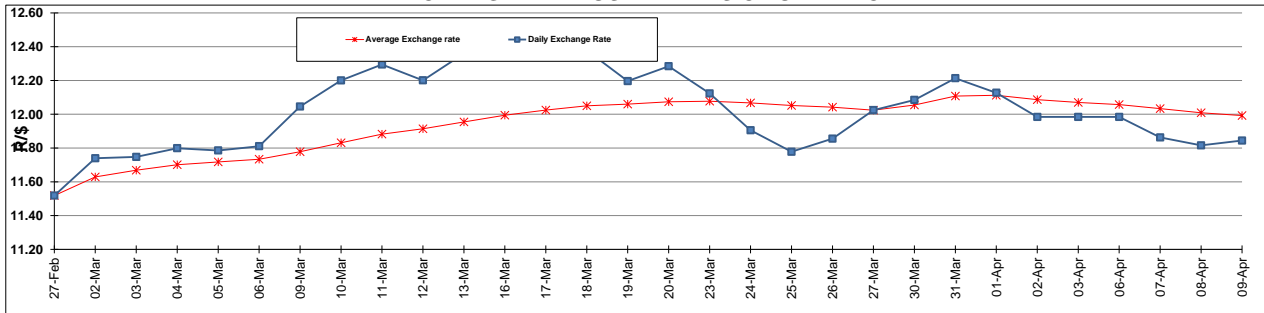
	PETROL 95 ULP	PETROL 93 ULP & LRP	DIESEL 0.05%	DIESEL 0.005%	ILL. PAR.
GAUTENG PUMP PRICE (SA c/l) AS FROM 03/04/2015	1,289.000	1,261.000	-	-	-
WHOLESALE PRICE (SA c/l) AS FROM 03/04/2015	-	-	1,122.790	1,129.190	743.828
SINGLE NATIONAL MAXIMUM RETAIL PRICE	-	-	-	-	957.000
BASIC FUEL PRICE - 09/04/2015 (SA c/l)	555.062	544.133	548.468	554.160	542.670
PRESS RELEASE CONTRIBUTION TO BFP 09/04/2015 - 09/04/2015 (SA c/l)	615.650	597.650	594.630	601.030	586.128
UNIT OVER/(UNDER) RECOVERY (SA c/l) - 09/04/2015	60.588	53.517	46.162	46.870	43.458
AVERAGE BASIC FUEL PRICE 27/03/2015 - 09/04/2015	577.400	562.185	561.023	567.071	556.845
AVERAGE UNIT OVER/(UNDER) RECOVERY 27/03/2015 - 09/04/2015	14.430	13.445	21.607	21.359	22.683

ANALYSIS MOVEMENT OF AVERAGE OVER/(UNDER) RECOVERY

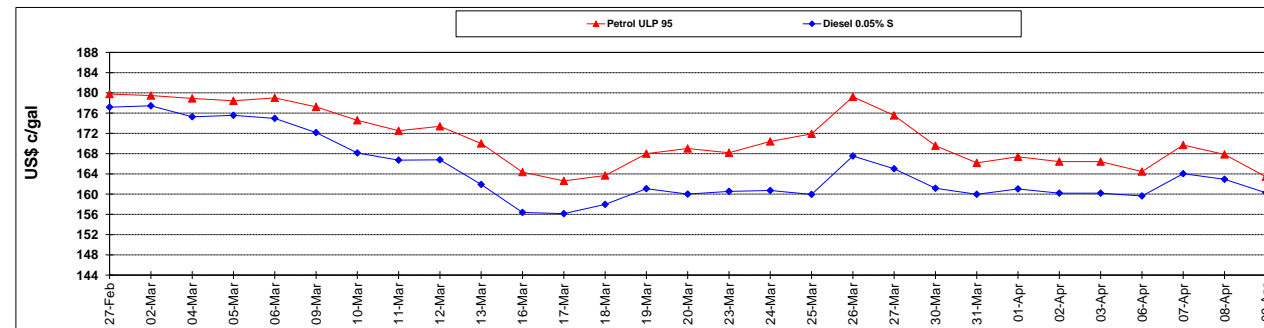
	PETROL 95	PETROL 93	DIESEL 0.05%	DIESEL 0.005%	ILL. PAR.
- MOVEMENT IN INTERNATIONAL PRODUCT PRICES	12.032	11.110	19.277	19.004	20.371
- MOVEMENT IN EXCHANGE RATE	2.398	2.335	2.330	2.355	2.312
AVERAGE UNIT OVER/(UNDER) RECOVERY 27/03/2015 - 09/04/2015	14.430	13.445	21.607	21.359	22.683

R/\$ EXCHANGE RATE - (R/\$ 11.8442 - 09/04/2015)

EXCHANGE RATE USED IN BASIC FUEL PRICE



INTERNATIONAL PRODUCT PRICES OF BASKET USED IN BASIC FUEL PRICE



BASIC FUEL PRICE IN SA CENTS PER LITRE

