

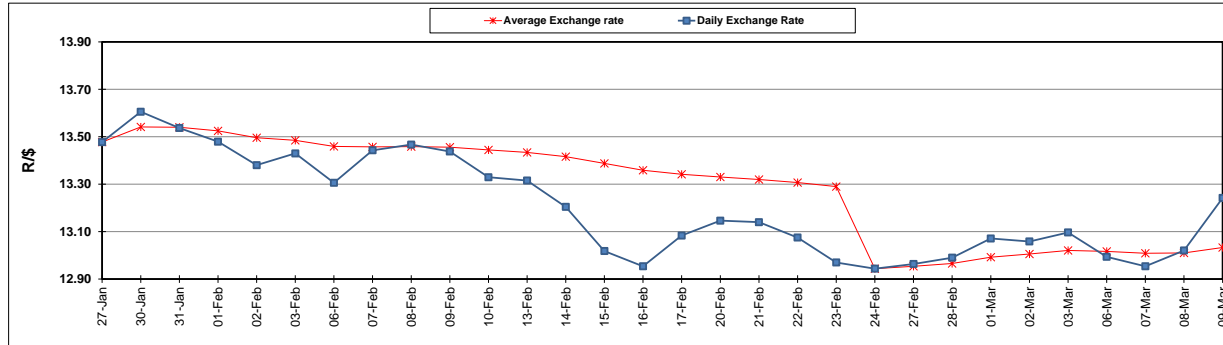
	PETROL 95 ULP	PETROL 93 ULP & LRP	DIESEL 0.05%	DIESEL 0.005%	ILL. PAR.
GAUTENG PUMP PRICE (SA c/l) AS FROM 01/03/2017	1 354.000	1 330.000	-	-	-
WHOLESALE PRICE (SA c/l) AS FROM 01/03/2017	-	-	1 160.830	1 163.230	750.588
SINGLE NATIONAL MAXIMUM RETAIL PRICE	-	-	-	-	966.000
BASIC FUEL PRICE - 09/03/2017 (SA c/l)	557.410	545.302	553.210	555.913	544.534
PRESS RELEASE CONTRIBUTION TO BFP 01/03/2017 - 09/03/2017 (SA c/l)	612.870	598.870	588.630	591.030	583.128
UNIT OVER/(UNDER) RECOVERY (SA c/l) - 09/03/2017	55.460	53.568	35.420	35.117	38.594
AVERAGE BASIC FUEL PRICE 24/02/2017 - 09/03/2017	569.160	557.772	568.983	571.956	560.807
AVERAGE UNIT OVER/(UNDER) RECOVERY 24/02/2017- 09/03/2017	46.110	43.498	20.247	19.674	24.721

ANALYSIS MOVEMENT OF AVERAGE OVER/(UNDER) RECOVERY

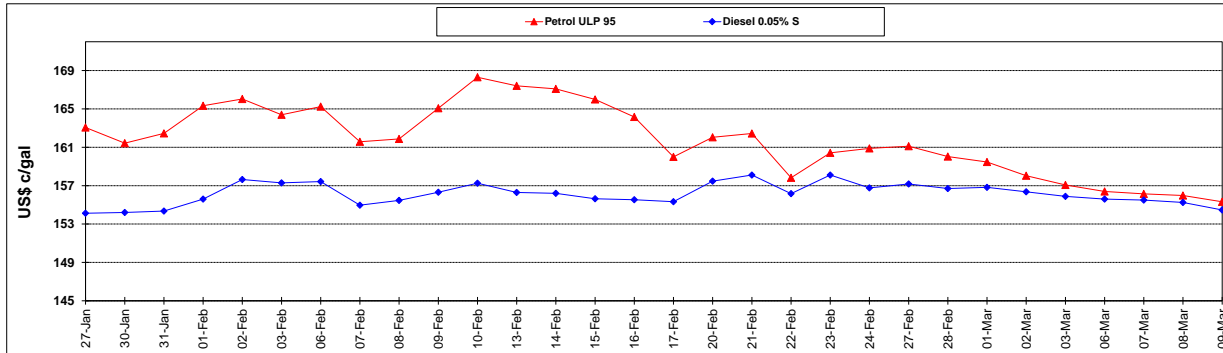
	PETROL 95	PETROL 93	DIESEL 0.05%	DIESEL 0.005%	ILL. PAR.
- MOVEMENT IN INTERNATIONAL PRODUCT PRICES	48.874	46.207	23.010	22.452	27.445
- MOVEMENT IN EXCHANGE RATE	(2.764)	(2.709)	(2.763)	(2.778)	(2.724)
AVERAGE UNIT OVER/(UNDER) RECOVERY 24/02/2017 - 09/03/2017	46.110	43.498	20.247	19.674	24.721

R/\$ EXCHANGE RATE - (R/\$ 13.2420 - 09/03/2017)

EXCHANGE RATE USED IN BASIC FUEL PRICE



INTERNATIONAL PRODUCT PRICES OF BASKET USED IN BASIC FUEL PRICE



BASIC FUEL PRICE IN SA CENTS PER LITRE

