

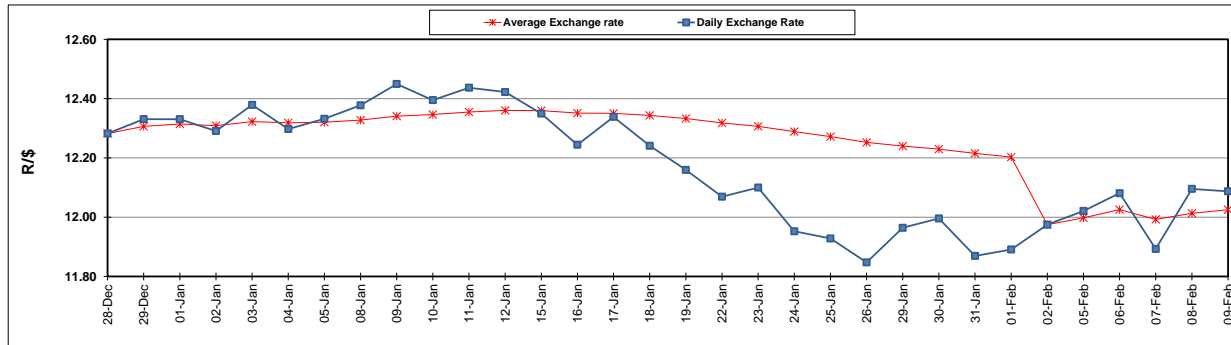
	PETROL 95 ULP	PETROL 93 ULP & LRP	DIESEL 0.05%	DIESEL 0.005%	ILL. PAR.
GAUTENG PUMP PRICE (SA c/l) AS FROM 07/02/2018	1 412.000	1 419.000	-	-	-
WHOLESALE PRICE (SA c/l) AS FROM 07/02/2018	-	-	1 256.630	1 259.030	818.388
SINGLE NATIONAL MAXIMUM RETAIL PRICE	-	-	-	-	1 056.000
BASIC FUEL PRICE - 09/02/2018 (SA c/l)	594.418	579.385	600.938	605.076	620.305
PRESS RELEASE CONTRIBUTION TO BFP 07/02/2018 - 09/02/2018 (SA c/l)	622.170	610.170	645.630	648.030	648.128
UNIT OVER/(UNDER) RECOVERY - 09/02/2018 (SA c/l)	27.752	30.785	44.692	42.954	27.823
AVERAGE BASIC FUEL PRICE 02/02/2018 - 09/02/2018	618.197	603.578	626.064	630.614	644.076
AVERAGE UNIT OVER/(UNDER) RECOVERY 02/02/2018 - 09/02/2018	18.973	21.593	28.066	25.916	13.552

ANALYSIS MOVEMENT OF AVERAGE OVER/(UNDER) RECOVERY

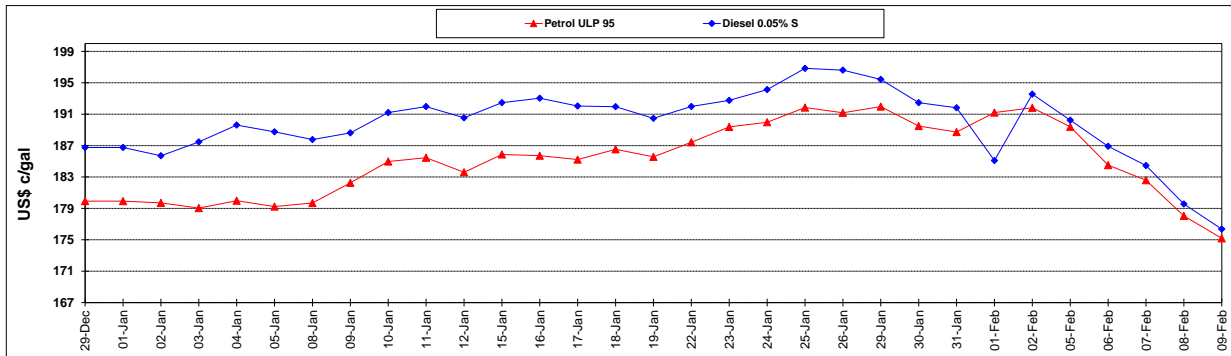
	PETROL 95	PETROL 93	DIESEL 0.05%	DIESEL 0.005%	ILL. PAR.
- MOVEMENT IN INTERNATIONAL PRODUCT PRICES	9.848	12.683	18.825	16.608	4.045
- MOVEMENT IN EXCHANGE RATE	9.125	8.909	9.241	9.308	9.507
AVERAGE UNIT OVER/(UNDER) RECOVERY 02/02/2018 - 09/02/2018	18.973	21.593	28.066	25.916	13.552

R/\$ EXCHANGE RATE - (R/\$ 12.0873 - 09/02/2018)

EXCHANGE RATE USED IN BASIC FUEL PRICE



INTERNATIONAL PRODUCT PRICES OF BASKET USED IN BASIC FUEL PRICE



BASIC FUEL PRICE IN SA CENTS PER LITRE

