

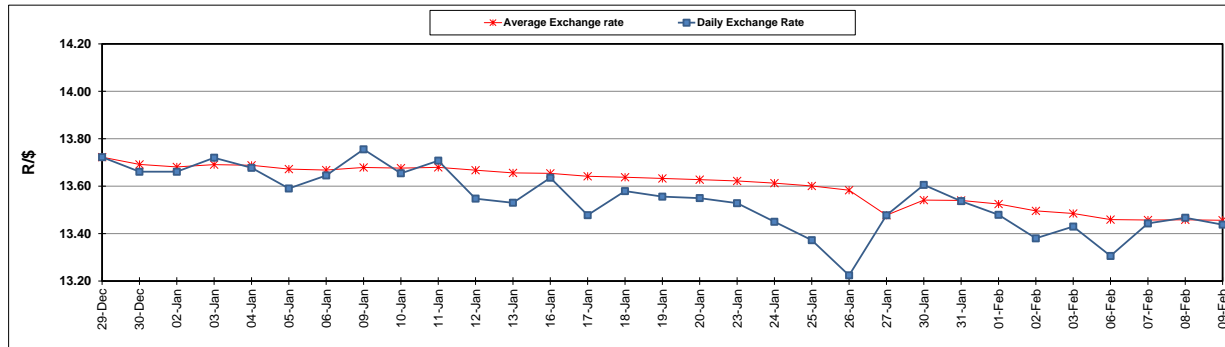
	PETROL 95 ULP	PETROL 93 ULP & LRP	DIESEL 0.05%	DIESEL 0.005%	ILL. PAR.
GAUTENG PUMP PRICE (SA c/l) AS FROM 01/02/2017	1 362.000	1 338.000	-	-	-
WHOLESALE PRICE (SA c/l) AS FROM 01/02/2017	-	-	1 162.830	1 165.230	758.588
SINGLE NATIONAL MAXIMUM RETAIL PRICE	-	-	-	-	976.000
BASIC FUEL PRICE - 09/02/2017 (SA c/l)	621.795	606.385	593.466	596.168	586.287
PRESS RELEASE CONTRIBUTION TO BFP 01/02/2017 - 09/02/2017 (SA c/l)	620.870	606.870	590.630	593.030	591.128
UNIT OVER/(UNDER) RECOVERY (SA c/l) - 09/02/2017	(0.925)	0.485	(2.836)	(3.138)	4.841
AVERAGE BASIC FUEL PRICE 27/01/2017 - 09/02/2017	616.344	600.992	590.876	593.066	584.460
AVERAGE UNIT OVER/(UNDER) RECOVERY 27/01/2017- 09/02/2017	(4.174)	(2.822)	(6.546)	(6.336)	1.568

ANALYSIS MOVEMENT OF AVERAGE OVER/(UNDER) RECOVERY

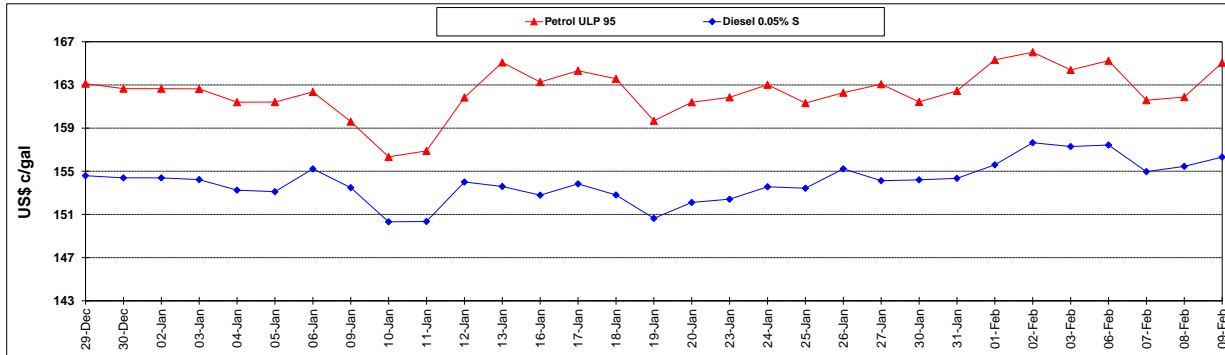
	PETROL 95	PETROL 93	DIESEL 0.05%	DIESEL 0.005%	ILL. PAR.
- MOVEMENT IN INTERNATIONAL PRODUCT PRICES	(9.982)	(8.485)	(12.114)	(11.925)	(3.939)
- MOVEMENT IN EXCHANGE RATE	5.808	5.663	5.568	5.589	5.507
AVERAGE UNIT OVER/(UNDER) RECOVERY 27/01/2017 - 09/02/2017	(4.174)	(2.822)	(6.546)	(6.336)	1.568

R/\$ EXCHANGE RATE - (R/\$ 13.4378 - 09/02/2017)

EXCHANGE RATE USED IN BASIC FUEL PRICE



INTERNATIONAL PRODUCT PRICES OF BASKET USED IN BASIC FUEL PRICE



BASIC FUEL PRICE IN SA CENTS PER LITRE

