

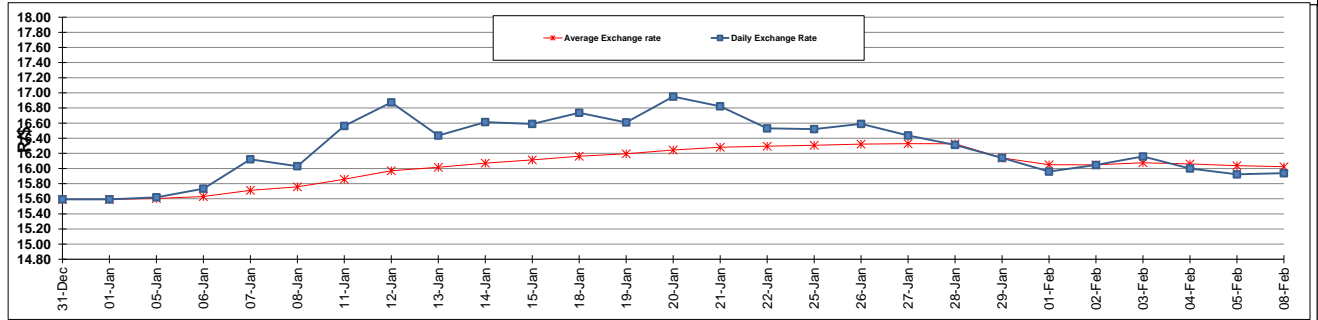
	PETROL 95 ULP	PETROL 93 ULP & LRP	DIESEL 0.05%	DIESEL 0.005%	ILL. PAR.
GAUTENG PUMP PRICE (SA c/l) AS FROM 03/02/2016	1 243.000	1 215.000	-	-	-
WHOLESALE PRICE (SA c/l) AS FROM 03/02/2016	-	-	943.170	947.570	588.028
SINGLE NATIONAL MAXIMUM RETAIL PRICE	-	-	-	-	749.000
BASIC FUEL PRICE - 08/02/2016 (SA c/l)	494.094	475.209	443.924	447.884	461.553
PRESS RELEASE CONTRIBUTION TO BFP 03/02/2016 - 08/02/2016 (SA c/l)	556.970	538.970	412.630	417.030	428.128
UNIT OVER/(UNDER) RECOVERY (SA c/l) - 08/02/2016	62.876	63.761	(31.294)	(30.854)	(33.425)
AVERAGE BASIC FUEL PRICE 29/01/2016 - 08/02/2016	518.820	496.314	440.467	444.801	462.119
AVERAGE UNIT OVER/(UNDER) RECOVERY 29/01/2016 - 08/02/2016	35.579	40.084	(1.266)	(0.771)	(8.705)

### ANALYSIS MOVEMENT OF AVERAGE OVER/(UNDER) RECOVERY

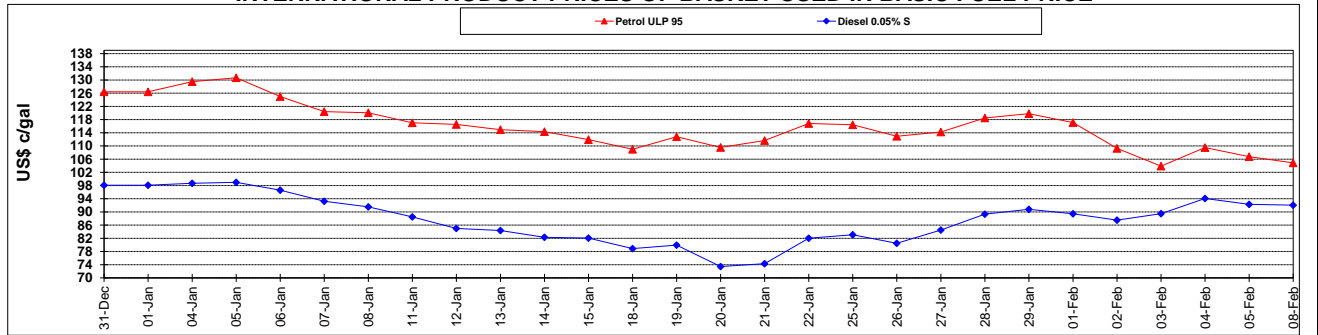
	PETROL 95	PETROL 93	DIESEL 0.05%	DIESEL 0.005%	ILL. PAR.
- MOVEMENT IN INTERNATIONAL PRODUCT PRICES	25.739	30.672	(9.620)	(9.207)	(17.469)
- MOVEMENT IN EXCHANGE RATE	9.840	9.413	8.354	8.436	8.764
AVERAGE UNIT OVER/(UNDER) RECOVERY 29/01/2016 - 08/02/2016	35.579	40.084	(1.266)	(0.771)	(8.705)

**R/\$ EXCHANGE RATE - (R/\$ 15.9378 - 08/02/2016)**

### EXCHANGE RATE USED IN BASIC FUEL PRICE



### INTERNATIONAL PRODUCT PRICES OF BASKET USED IN BASIC FUEL PRICE



### BASIC FUEL PRICE IN SA CENTS PER LITRE

