

UPDATE OF THE BASIC FUEL PRICE

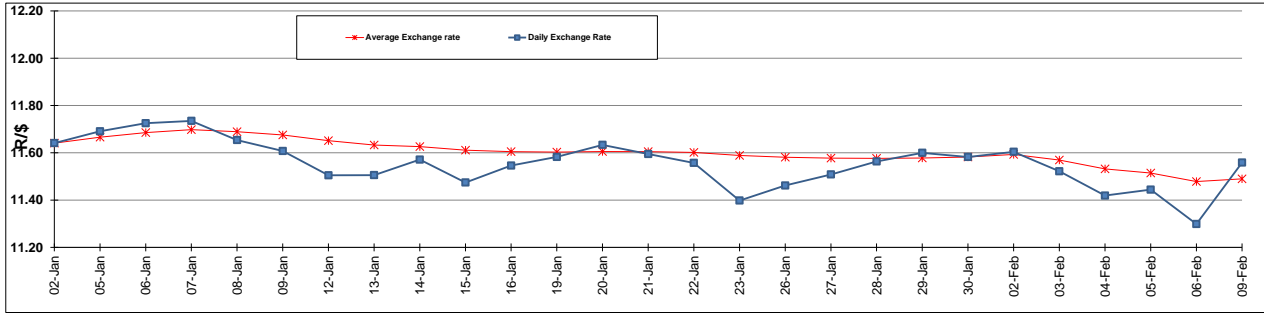
	PETROL 95 ULP	PETROL 93 ULP & LRP	DIESEL 0.05%	DIESEL 0.005%	ILL. PAR.
GAUTENG PUMP PRICE (SA c/l) AS FROM 04/02/2015	1,031.000	1,009.000	-	-	-
WHOLESALE PRICE (SA c/l) AS FROM 04/02/2015	-	-	926.090	930.490	645.928
SINGLE NATIONAL MAXIMUM RETAIL PRICE	-	-	-	-	833.000
BASIC FUEL PRICE - 09/02/2015 (SA c/l)	552.141	536.155	570.841	575.147	585.594
PRESS RELEASE CONTRIBUTION TO BFP 04/02/2015 - 09/02/2015 (SA c/l)	440.250	428.250	480.630	485.030	491.128
UNIT OVER/(UNDER) RECOVERY (SA c/l) - 09/02/2015	(111.891)	(107.905)	(90.211)	(90.117)	(94.466)
AVERAGE BASIC FUEL PRICE 30/01/2015 - 09/02/2015	520.132	503.907	536.411	540.266	553.006
AVERAGE UNIT OVER/(UNDER) RECOVERY 30/01/2015 - 09/02/2015	(40.025)	(35.800)	(12.067)	(11.521)	(18.163)

ANALYSIS MOVEMENT OF AVERAGE OVER/(UNDER) RECOVERY

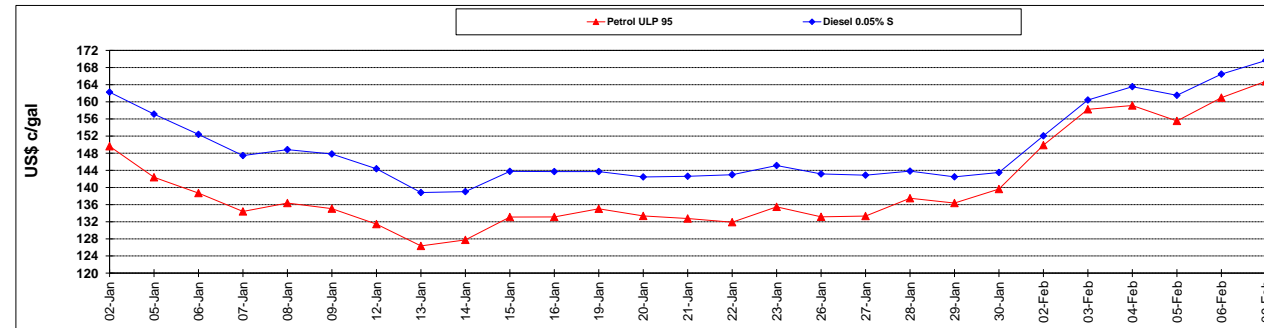
	PETROL 95	PETROL 93	DIESEL 0.05%	DIESEL 0.005%	ILL. PAR.
- MOVEMENT IN INTERNATIONAL PRODUCT PRICES	(44.004)	(39.655)	(16.171)	(15.655)	(22.395)
- MOVEMENT IN EXCHANGE RATE	3.979	3.855	4.104	4.133	4.231
AVERAGE UNIT OVER/(UNDER) RECOVERY 30/01/2015 - 09/02/2015	(40.025)	(35.800)	(12.067)	(11.521)	(18.163)

R/\$ EXCHANGE RATE - (R/\$ 11.5585 - 09/02/2015)

EXCHANGE RATE USED IN BASIC FUEL PRICE



INTERNATIONAL PRODUCT PRICES OF BASKET USED IN BASIC FUEL PRICE



BASIC FUEL PRICE IN SA CENTS PER LITRE

