

UPDATE OF THE BASIC FUEL PRICE

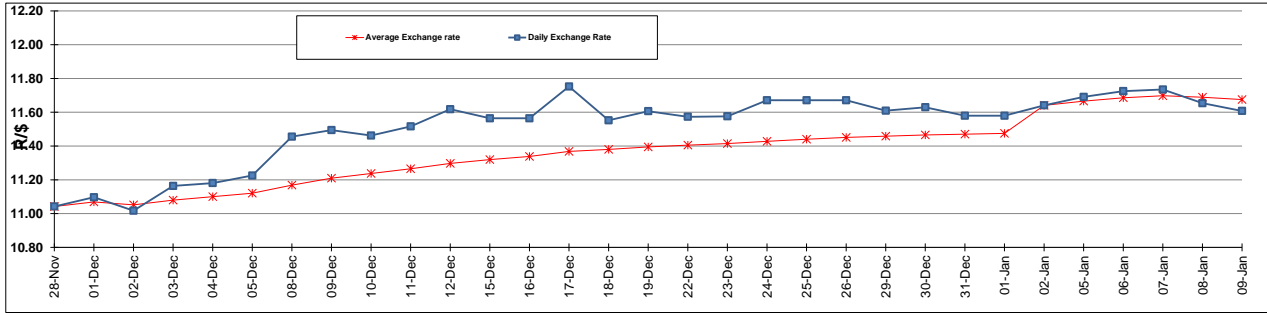
	PETROL 95 ULP	PETROL 93 ULP & LRP	DIESEL 0.05%	DIESEL 0.005%	ILL. PAR.
GAUTENG PUMP PRICE (SA c/l) AS FROM 07/01/2015	1,124.000	1,102.000	-	-	-
WHOLESALE PRICE (SA c/l) AS FROM 07/01/2015	-	-	1,028.090	1,032.490	747.928
SINGLE NATIONAL MAXIMUM RETAIL PRICE	-	-	-	-	969.000
BASIC FUEL PRICE - 09/01/2015 (SA c/l)	461.972	450.149	504.922	508.965	510.041
PRESS RELEASE CONTRIBUTION TO BFP 07/01/2015 - 09/01/2015 (SA c/l)	533.250	521.250	582.630	587.030	593.128
UNIT OVER/(UNDER) RECOVERY (SA c/l) - 09/01/2015	71.278	71.101	77.708	78.065	83.087
AVERAGE BASIC FUEL PRICE 02/01/2015 - 09/01/2015	478.164	466.069	522.813	526.897	528.534
AVERAGE UNIT OVER/(UNDER) RECOVERY 02/01/2015 - 09/01/2015	116.586	118.682	111.818	112.633	118.594

ANALYSIS MOVEMENT OF AVERAGE OVER/(UNDER) RECOVERY

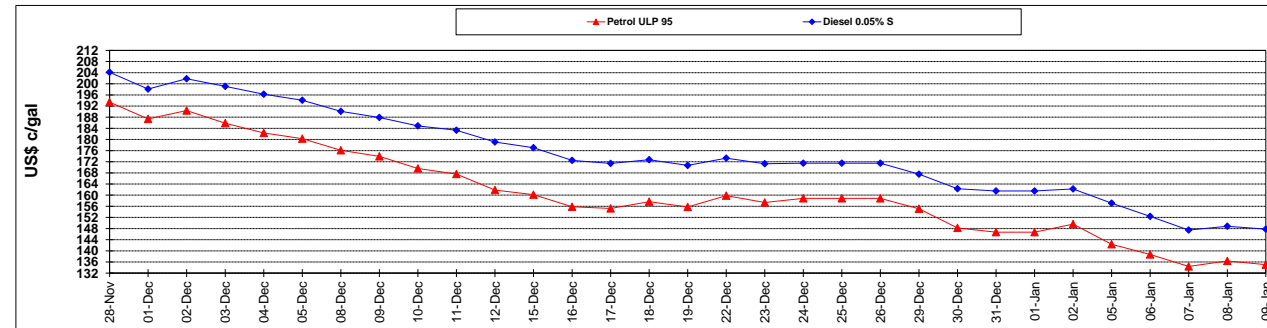
	PETROL 95	PETROL 93	DIESEL 0.05%	DIESEL 0.005%	ILL. PAR.
- MOVEMENT IN INTERNATIONAL PRODUCT PRICES	124.801	126.689	120.800	121.686	127.675
- MOVEMENT IN EXCHANGE RATE	(8.215)	(8.008)	(8.983)	(9.053)	(9.081)
AVERAGE UNIT OVER/(UNDER) RECOVERY 02/01/2015 - 09/01/2015	116.586	118.682	111.818	112.633	118.594

R/\$ EXCHANGE RATE - (R/\$ 11.6077 - 09/01/2015)

EXCHANGE RATE USED IN BASIC FUEL PRICE



INTERNATIONAL PRODUCT PRICES OF BASKET USED IN BASIC FUEL PRICE



BASIC FUEL PRICE IN SA CENTS PER LITRE

