

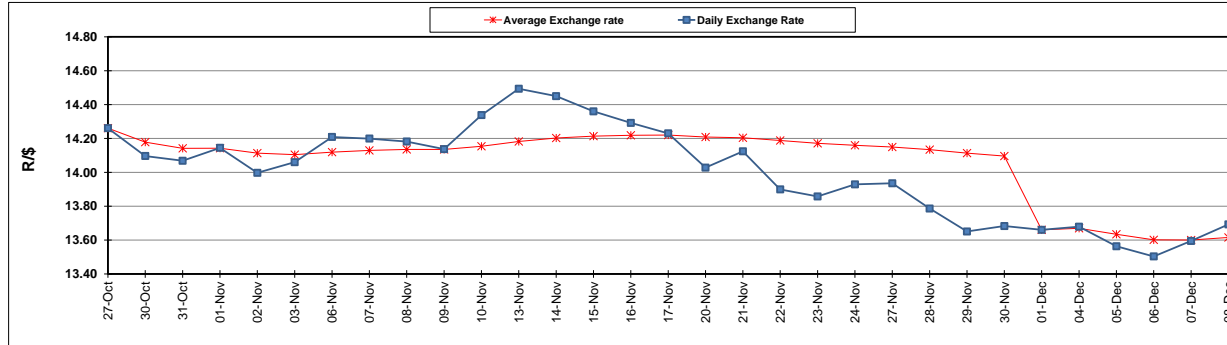
	PETROL 95 ULP	PETROL 93 ULP & LRP	DIESEL 0.05%	DIESEL 0.005%	ILL. PAR.
GAUTENG PUMP PRICE (SA c/l) AS FROM 07/12/2017	1 476.000	1 449.000	-	-	-
WHOLESALE PRICE (SA c/l) AS FROM 07/12/2017	-	-	1 295.630	1 302.030	865.388
SINGLE NATIONAL MAXIMUM RETAIL PRICE	-	-	-	-	1 119.000
BASIC FUEL PRICE - 08/12/2017 (SA c/l)	663.018	650.321	671.319	674.983	673.007
PRESS RELEASE CONTRIBUTION TO BFP 05/12/2017 - 08/12/2017 (SA c/l)	686.170	669.170	684.630	691.030	695.128
UNIT OVER/(UNDER) RECOVERY - 08/12/2017 (SA c/l)	23.152	18.849	13.311	16.047	22.121
AVERAGE BASIC FUEL PRICE 01/12/2017 - 08/12/2017	654.341	640.817	659.720	663.398	663.565
AVERAGE UNIT OVER/(UNDER) RECOVERY 01/12/2017 - 08/12/2017	(1.721)	(5.197)	(5.590)	(1.368)	(5.437)

ANALYSIS MOVEMENT OF AVERAGE OVER/(UNDER) RECOVERY

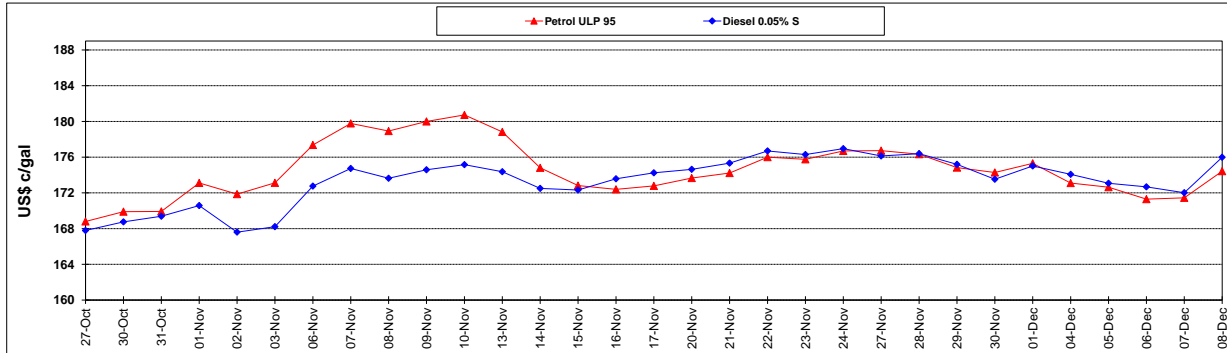
	PETROL 95	PETROL 93	DIESEL 0.05%	DIESEL 0.005%	ILL. PAR.
- MOVEMENT IN INTERNATIONAL PRODUCT PRICES	(24.827)	(27.826)	(28.886)	(24.794)	(28.869)
- MOVEMENT IN EXCHANGE RATE	23.106	22.629	23.296	23.426	23.432
AVERAGE UNIT OVER/(UNDER) RECOVERY 01/12/2017 - 08/12/2017	(1.721)	(5.197)	(5.590)	(1.368)	(5.437)

R/\$ EXCHANGE RATE - (R/\$ 13.6925 - 08/12/2017)

EXCHANGE RATE USED IN BASIC FUEL PRICE



INTERNATIONAL PRODUCT PRICES OF BASKET USED IN BASIC FUEL PRICE



BASIC FUEL PRICE IN SA CENTS PER LITRE

