

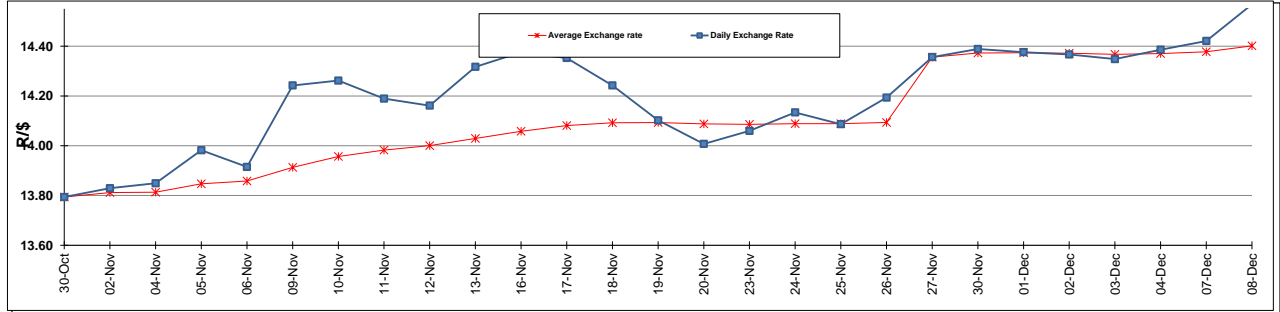
	PETROL 95 ULP	PETROL 93 ULP & LRP	DIESEL 0.05%	DIESEL 0.005%	ILL. PAR.
GAUTENG PUMP PRICE (SA c/l) AS FROM 02/12/2015	1 240.000	1 209.000	-	-	-
WHOLESALE PRICE (SA c/l) AS FROM 02/12/2015	-	-	1 081.170	1 088.570	710.028
SINGLE NATIONAL MAXIMUM RETAIL PRICE	-	-	-	-	912.000
BASIC FUEL PRICE - 08/12/2015 (SA c/l)	530.473	514.702	486.402	491.536	489.375
PRESS RELEASE CONTRIBUTION TO BFP 02/12/2015 - 08/12/2015 (SA c/l)	553.970	532.970	550.630	558.030	550.128
UNIT OVER/(UNDER) RECOVERY (SA c/l) - 08/12/2015	23.497	18.268	64.228	66.494	60.753
AVERAGE BASIC FUEL PRICE 27/11/2015 - 08/12/2015	551.165	535.406	516.151	521.446	517.511
AVERAGE UNIT OVER/(UNDER) RECOVERY 27/11/2015 - 08/12/2015	5.393	0.151	36.729	38.084	33.367

### ANALYSIS MOVEMENT OF AVERAGE OVER/(UNDER) RECOVERY

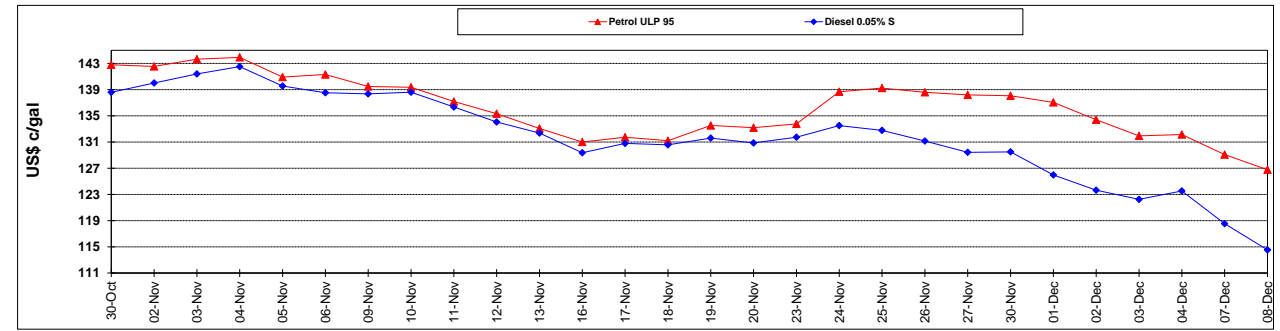
	PETROL 95	PETROL 93	DIESEL 0.05%	DIESEL 0.005%	ILL. PAR.
- MOVEMENT IN INTERNATIONAL PRODUCT PRICES	17.162	11.584	47.750	49.218	44.417
- MOVEMENT IN EXCHANGE RATE	(11.769)	(11.432)	(11.021)	(11.134)	(11.050)
AVERAGE UNIT OVER/(UNDER) RECOVERY 27/11/2015 - 08/12/2015	5.393	0.151	36.729	38.084	33.367

R/\$ EXCHANGE RATE - (R/\$ 14.5680 - 08/12/2015)

### EXCHANGE RATE USED IN BASIC FUEL PRICE



### INTERNATIONAL PRODUCT PRICES OF BASKET USED IN BASIC FUEL PRICE



### BASIC FUEL PRICE IN SA CENTS PER LITRE

