

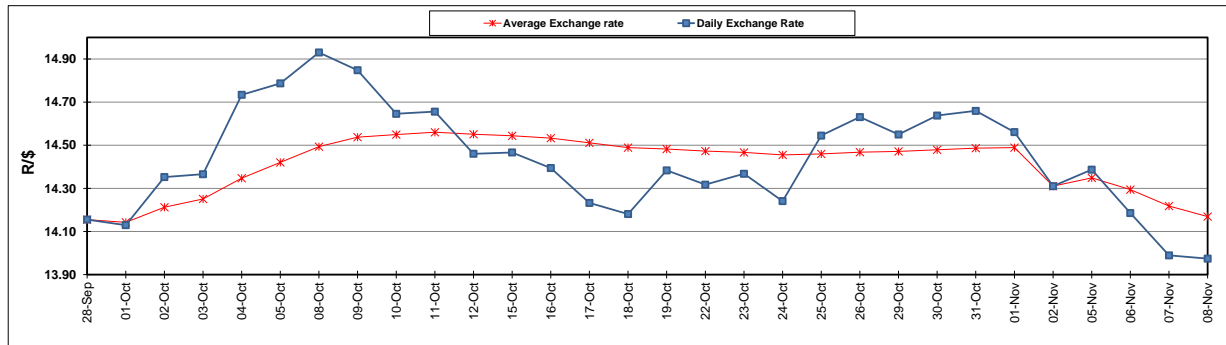
| | PETROL 95 ULP | PETROL 93 ULP & LRP | DIESEL 0.05% | DIESEL 0.005% | ILL. PAR. |
|--|---------------|---------------------|--------------|---------------|-----------|
| GAUTENG PUMP PRICE (SA c/l) AS FROM 07/11/2018 | 1 708.000 | 1 685.000 | - | - | - |
| WHOLESALE PRICE (SA c/l) AS FROM 07/11/2018 | - | - | 1 612.750 | 1 620.150 | 1 085.088 |
| SINGLE NATIONAL MAXIMUM RETAIL PRICE | - | - | - | - | 1 409.000 |
| BASIC FUEL PRICE - 08/11/2018 (SA c/l) | 670.628 | 661.384 | 814.602 | 819.624 | 815.229 |
| PRESS RELEASE CONTRIBUTION TO BFP 07/11/2018 - 08/11/2018 (SA c/l) | 829.250 | 816.250 | 917.630 | 925.030 | 912.128 |
| UNIT OVER/(UNDER) RECOVERY - 08/11/2018 (SA c/l) | 158.622 | 154.866 | 103.028 | 105.406 | 96.899 |
| AVERAGE BASIC FUEL PRICE 02/11/2018 - 08/11/2018 | 692.968 | 683.239 | 822.551 | 828.493 | 821.286 |
| AVERAGE UNIT OVER/(UNDER) RECOVERY 02/11/2018 - 08/11/2018 | 149.434 | 146.163 | 79.479 | 79.137 | 74.042 |

ANALYSIS MOVEMENT OF AVERAGE OVER/(UNDER) RECOVERY

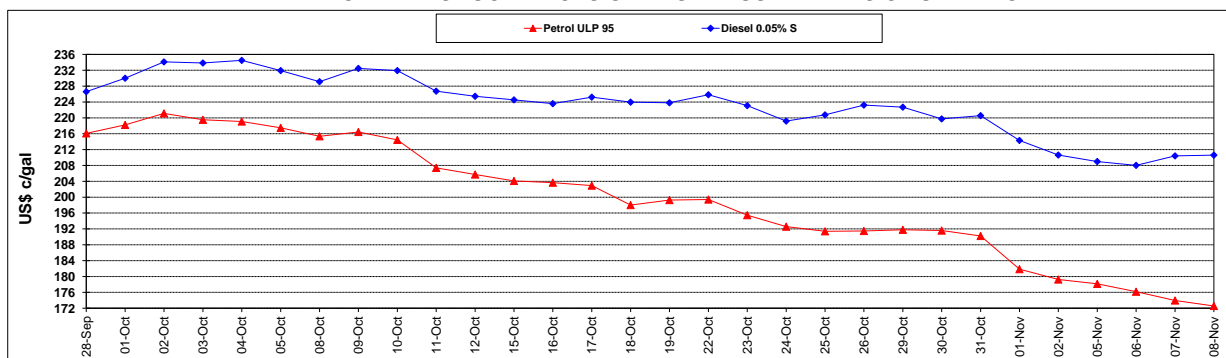
| | PETROL 95 | PETROL 93 | DIESEL 0.05% | DIESEL 0.005% | ILL. PAR. |
|--|-----------|-----------|--------------|---------------|-----------|
| - MOVEMENT IN INTERNATIONAL PRODUCT PRICES | 133.784 | 130.733 | 60.902 | 60.426 | 55.494 |
| - MOVEMENT IN EXCHANGE RATE | 15.650 | 15.430 | 18.577 | 18.711 | 18.548 |
| AVERAGE UNIT OVER/(UNDER) RECOVERY 02/11/2018 - 08/11/2018 | 149.434 | 146.163 | 79.479 | 79.137 | 74.042 |

R/\$ EXCHANGE RATE - (R/\$13.9740 - 08/11/2018)

EXCHANGE RATE USED IN BASIC FUEL PRICE



INTERNATIONAL PRODUCT PRICES OF BASKET USED IN BASIC FUEL PRICE



BASIC FUEL PRICE IN SA CENTS PER LITRE

