

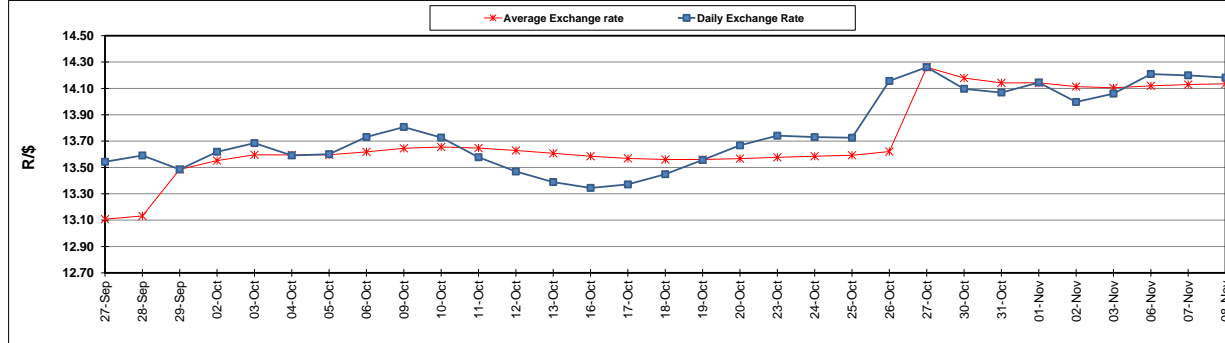
| | PETROL 95 ULP | PETROL 93 ULP & LRP | DIESEL 0.05% | DIESEL 0.005% | ILL. PAR. |
|--|------------------|------------------------|-----------------|------------------|-----------|
| GAUTENG PUMP PRICE (SA c/l) AS FROM 01/11/2017 | 1 405.000 | 1 378.000 | - | - | - |
| WHOLESALE PRICE (SA c/l) AS FROM 01/11/2017 | - | - | 1 235.330 | 1 244.730 | 792.088 |
| SINGLE NATIONAL MAXIMUM RETAIL PRICE | - | - | - | - | 1 021.000 |
| BASIC FUEL PRICE - 08/11/2017 (SA c/l) | 705.754 | 689.193 | 688.793 | 694.781 | 704.185 |
| PRESS RELEASE CONTRIBUTION TO BFP 01/11/2017 - 08/11/2017 (SA c/l) | 619.070 | 602.070 | 623.630 | 633.030 | 621.128 |
| UNIT OVER/(UNDER) RECOVERY (SA c/l) - 08/11/2017 | (86.684) | (87.123) | (65.163) | (61.751) | (83.057) |
| AVERAGE BASIC FUEL PRICE 27/10/2017 - 08/11/2017 | 682.535 | 666.383 | 673.097 | 680.980 | 682.358 |
| AVERAGE UNIT OVER/(UNDER) RECOVERY 27/10/2017 - 08/11/2017 | (64.798) | (65.646) | (57.134) | (56.950) | (68.230) |

ANALYSIS MOVEMENT OF AVERAGE OVER/(UNDER) RECOVERY

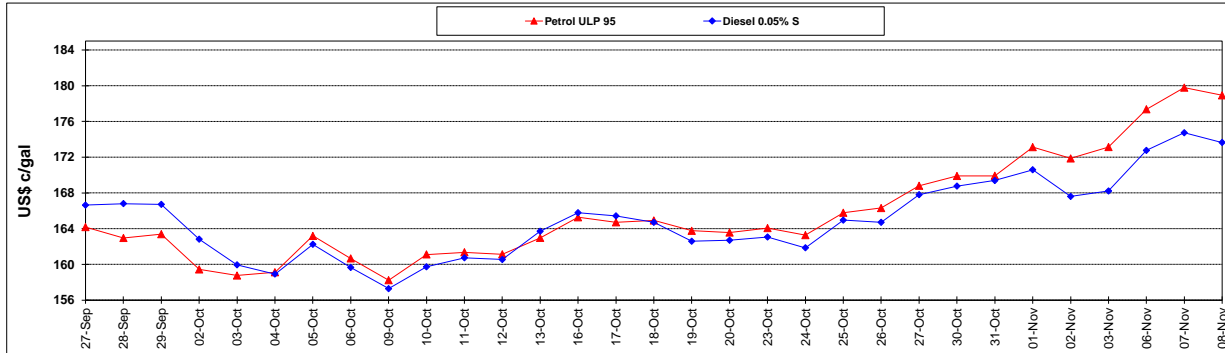
| | PETROL 95 | PETROL 93 | DIESEL 0.05% | DIESEL 0.005% | ILL. PAR. |
|--|-----------|-----------|--------------|---------------|-----------|
| - MOVEMENT IN INTERNATIONAL PRODUCT PRICES | (39.969) | (41.405) | (32.649) | (32.178) | (43.408) |
| - MOVEMENT IN EXCHANGE RATE | (24.829) | (24.241) | (24.485) | (24.772) | (24.822) |
| AVERAGE UNIT OVER/(UNDER) RECOVERY 27/10/2017 - 08/11/2017 | (64.798) | (65.646) | (57.134) | (56.950) | (68.230) |

R/\$ EXCHANGE RATE - (R/\$ 14.1818 - 08/11/2017)

EXCHANGE RATE USED IN BASIC FUEL PRICE



INTERNATIONAL PRODUCT PRICES OF BASKET USED IN BASIC FUEL PRICE



BASIC FUEL PRICE IN SA CENTS PER LITRE

