

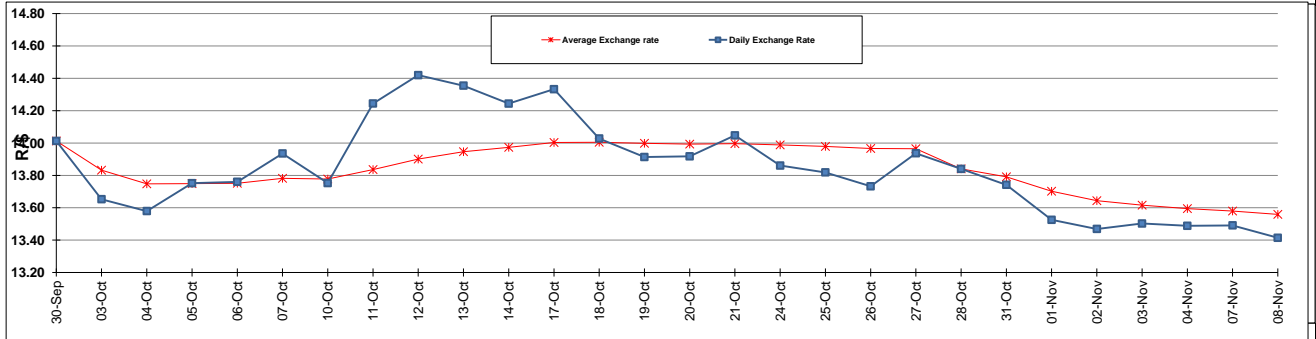
	PETROL 95 ULP	PETROL 93 ULP & LRP	DIESEL 0.05%	DIESEL 0.005%	ILL. PAR.
GAUTENG PUMP PRICE (SA c/l) AS FROM 02/11/2016	1 305.000	1 279.000	-	-	-
WHOLESALE PRICE (SA c/l) AS FROM 02/11/2016	-	-	1 134.870	1 138.270	726.628
SINGLE NATIONAL MAXIMUM RETAIL PRICE	-	-	-	-	934.000
BASIC FUEL PRICE - 08/11/2016 (SA c/l)	506.902	491.004	497.178	500.946	494.158
PRESS RELEASE CONTRIBUTION TO BFP 02/11/2016 - 08/11/2016 (SA c/l)	583.970	567.970	568.630	572.030	565.128
UNIT OVER/(UNDER) RECOVERY (SA c/l) - 08/11/2016	77.068	76.966	71.452	71.084	70.970
AVERAGE BASIC FUEL PRICE 28/10/2016 - 08/11/2016	531.529	516.303	517.198	521.242	512.762
AVERAGE UNIT OVER/(UNDER) RECOVERY 28/10/2016 - 08/11/2016	35.566	34.792	27.807	27.163	30.991

ANALYSIS MOVEMENT OF AVERAGE OVER/(UNDER) RECOVERY

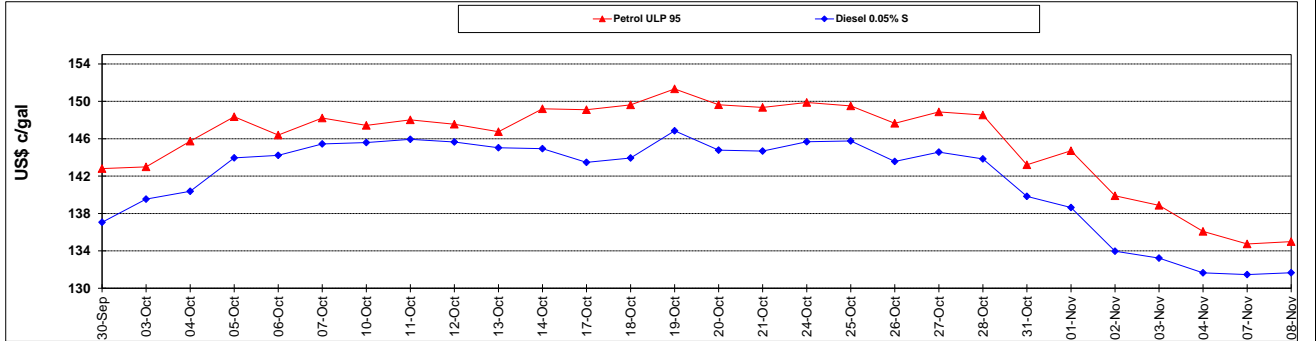
	PETROL 95	PETROL 93	DIESEL 0.05%	DIESEL 0.005%	ILL. PAR.
- MOVEMENT IN INTERNATIONAL PRODUCT PRICES	19.666	19.347	12.336	11.571	15.652
- MOVEMENT IN EXCHANGE RATE	15.900	15.445	15.471	15.592	15.339
AVERAGE UNIT OVER/(UNDER) RECOVERY 28/10/2016 - 08/11/2016	35.566	34.792	27.807	27.163	30.991

R/\$ EXCHANGE RATE - (R/\$ 13.4145- 08/11/2016)

EXCHANGE RATE USED IN BASIC FUEL PRICE



INTERNATIONAL PRODUCT PRICES OF BASKET USED IN BASIC FUEL PRICE



BASIC FUEL PRICE IN SA CENTS PER LITRE

