

UPDATE OF THE BASIC FUEL PRICE

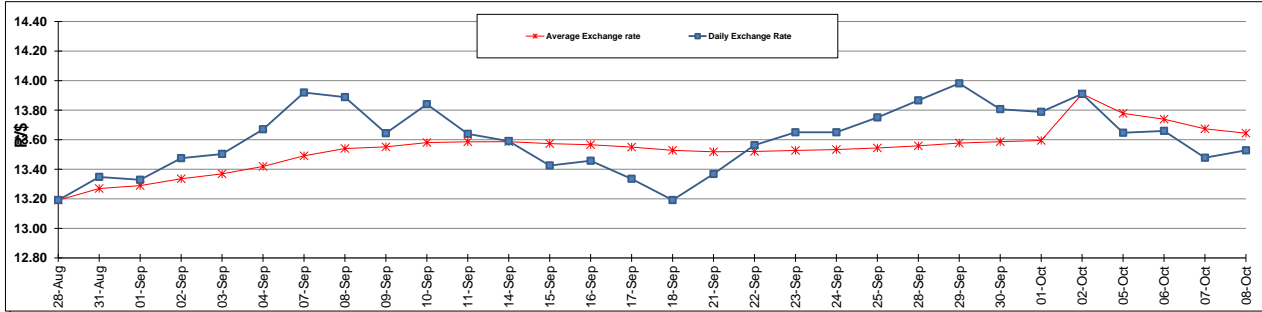
	PETROL 95 ULP	PETROL 93 ULP & LRP	DIESEL 0.05%	DIESEL 0.005%	ILL. PAR.
GAUTENG PUMP PRICE (SA c/l) AS FROM 07/10/2015	1,261.000	1,230.000	-	-	-
WHOLESALE PRICE (SA c/l) AS FROM 07/10/2015	-	-	1,093.970	1,100.370	711.828
SINGLE NATIONAL MAXIMUM RETAIL PRICE	-	-	-	-	914.000
BASIC FUEL PRICE - 08/10/2015 (SA c/l)	585.601	569.647	578.040	582.942	565.505
PRESS RELEASE CONTRIBUTION TO BFP 08/10/2015 - 08/10/2015 (SA c/l)	582.870	561.870	565.630	572.030	554.128
UNIT OVER/(UNDER) RECOVERY (SA c/l) - 08/10/2015	(2.731)	(7.777)	(12.410)	(10.912)	(11.377)
AVERAGE BASIC FUEL PRICE 02/10/2015 - 08/10/2015	589.349	572.795	572.124	577.315	562.806
AVERAGE UNIT OVER/(UNDER) RECOVERY 02/10/2015 - 08/10/2015	(8.879)	(9.725)	(38.294)	(35.885)	(38.678)

ANALYSIS MOVEMENT OF AVERAGE OVER/(UNDER) RECOVERY

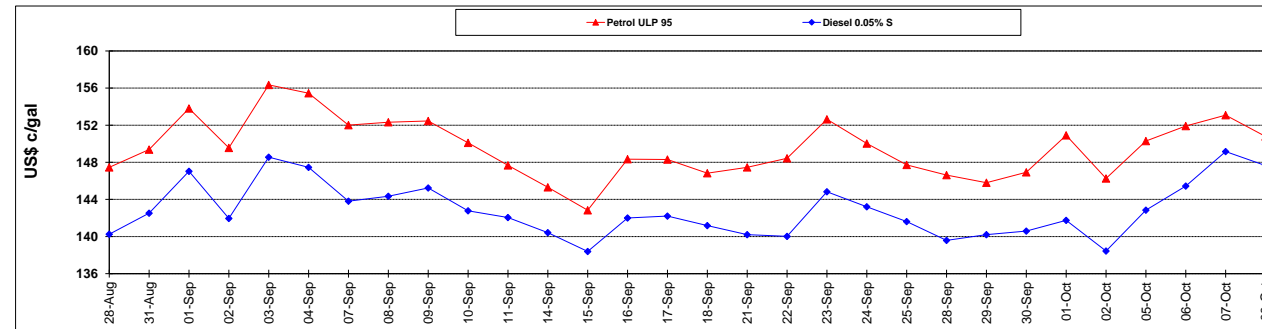
	PETROL 95	PETROL 93	DIESEL 0.05%	DIESEL 0.005%	ILL. PAR.
- MOVEMENT IN INTERNATIONAL PRODUCT PRICES	(6.732)	(7.639)	(36.210)	(33.782)	(36.628)
- MOVEMENT IN EXCHANGE RATE	(2.147)	(2.086)	(2.084)	(2.103)	(2.050)
AVERAGE UNIT OVER/(UNDER) RECOVERY 02/10/2015 - 08/10/2015	(8.879)	(9.725)	(38.294)	(35.885)	(38.678)

R/\$ EXCHANGE RATE - (R/\$ 13.5281 - 08/10/2015)

EXCHANGE RATE USED IN BASIC FUEL PRICE



INTERNATIONAL PRODUCT PRICES OF BASKET USED IN BASIC FUEL PRICE



BASIC FUEL PRICE IN SA CENTS PER LITRE

