

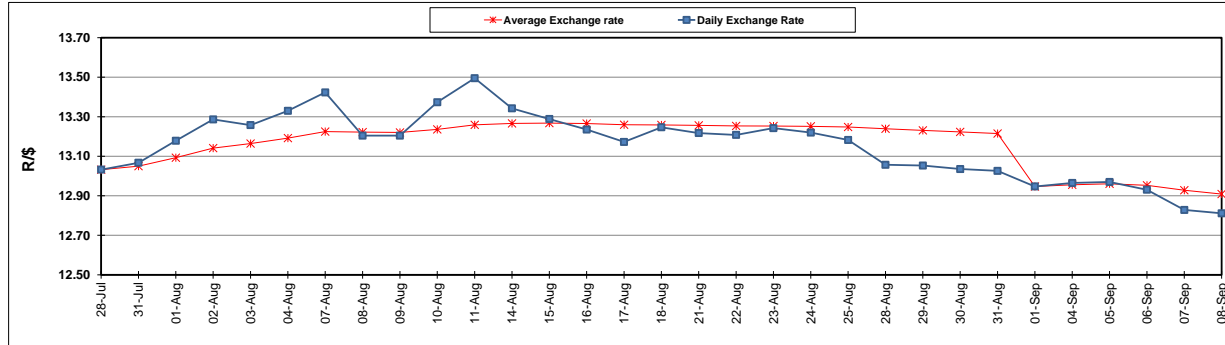
| | PETROL 95 ULP | PETROL 93 ULP & LRP | DIESEL 0.05% | DIESEL 0.005% | ILL. PAR. |
|--|------------------|------------------------|-----------------|------------------|-----------|
| GAUTENG PUMP PRICE (SA c/l) AS FROM 06/09/2017 | 1 372.000 | 1 349.000 | - | - | - |
| WHOLESALE PRICE (SA c/l) AS FROM 06/09/2017 | - | - | 1 170.330 | 1 175.730 | 732.088 |
| SINGLE NATIONAL MAXIMUM RETAIL PRICE | - | - | - | - | 941.000 |
| BASIC FUEL PRICE - 08/09/2017 (SA c/l) | 594.656 | 577.263 | 582.456 | 588.189 | 576.470 |
| PRESS RELEASE CONTRIBUTION TO BFP 06/09/2017 - 08/09/2017 (SA c/l) | 586.070 | 573.070 | 558.630 | 564.030 | 561.128 |
| UNIT OVER/(UNDER) RECOVERY (SA c/l) - 08/09/2017 | (8.586) | (4.193) | (23.826) | (24.159) | (15.342) |
| AVERAGE BASIC FUEL PRICE 01/09/2017 - 08/09/2017 | 601.500 | 585.279 | 574.707 | 580.454 | 573.052 |
| AVERAGE UNIT OVER/(UNDER) RECOVERY 01/09/2017 - 08/09/2017 | (46.630) | (43.409) | (38.077) | (38.424) | (36.424) |

ANALYSIS MOVEMENT OF AVERAGE OVER/(UNDER) RECOVERY

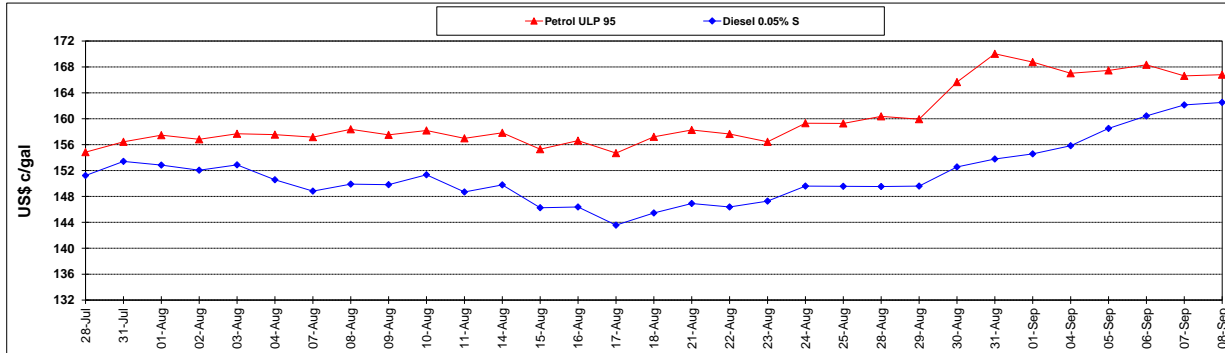
| | PETROL 95 | PETROL 93 | DIESEL 0.05% | DIESEL 0.005% | ILL. PAR. |
|--|-----------|-----------|--------------|---------------|-----------|
| - MOVEMENT IN INTERNATIONAL PRODUCT PRICES | (60.912) | (57.306) | (51.723) | (52.206) | (50.030) |
| - MOVEMENT IN EXCHANGE RATE | 14.282 | 13.897 | 13.646 | 13.782 | 13.606 |
| AVERAGE UNIT OVER/(UNDER) RECOVERY 01/09/2017 - 08/09/2017 | (46.630) | (43.409) | (38.077) | (38.424) | (36.424) |

R/\$ EXCHANGE RATE - (R/\$ 12.8113 - 08/09/2017)

EXCHANGE RATE USED IN BASIC FUEL PRICE



INTERNATIONAL PRODUCT PRICES OF BASKET USED IN BASIC FUEL PRICE



BASIC FUEL PRICE IN SA CENTS PER LITRE

