

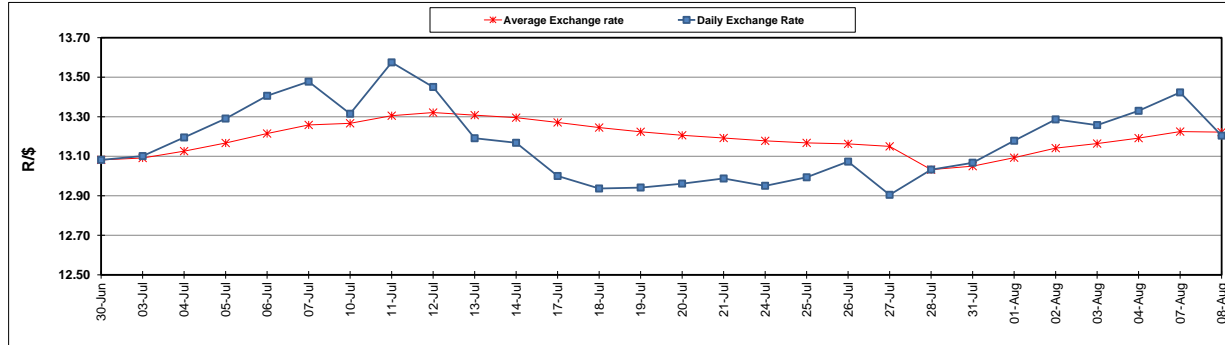
	PETROL 95 ULP	PETROL 93 ULP & LRP	DIESEL 0.05%	DIESEL 0.005%	ILL. PAR.
GAUTENG PUMP PRICE (SA c/l) AS FROM 02/08/2017	1 305.000	1 282.000	-	-	-
WHOLESALE PRICE (SA c/l) AS FROM 02/08/2017	-	-	1 126.330	1 131.730	683.088
SINGLE NATIONAL MAXIMUM RETAIL PRICE	-	-	-	-	876.000
BASIC FUEL PRICE - 08/08/2017 (SA c/l)	583.423	567.230	556.153	563.208	559.378
PRESS RELEASE CONTRIBUTION TO BFP 02/08/2017 - 08/08/2017 (SA c/l)	523.670	510.670	514.630	520.030	512.128
UNIT OVER/(UNDER) RECOVERY (SA c/l) - 08/08/2017	(59.753)	(56.560)	(41.523)	(43.178)	(47.250)
AVERAGE BASIC FUEL PRICE 28/07/2017 - 08/08/2017	579.455	564.095	562.264	568.952	562.075
AVERAGE UNIT OVER/(UNDER) RECOVERY 28/07/2017 - 08/08/2017	(62.910)	(60.550)	(58.509)	(60.172)	(59.697)

ANALYSIS MOVEMENT OF AVERAGE OVER/(UNDER) RECOVERY

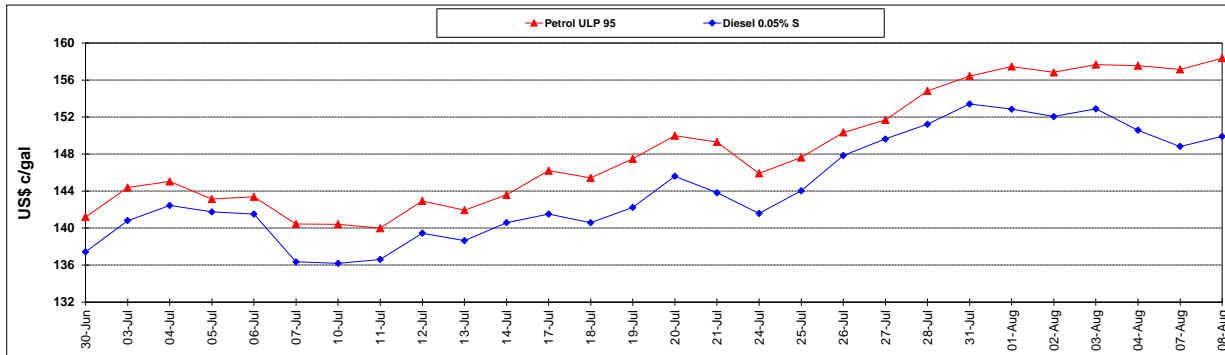
	PETROL 95	PETROL 93	DIESEL 0.05%	DIESEL 0.005%	ILL. PAR.
- MOVEMENT IN INTERNATIONAL PRODUCT PRICES	(59.737)	(57.461)	(55.430)	(57.057)	(56.619)
- MOVEMENT IN EXCHANGE RATE	(3.173)	(3.089)	(3.079)	(3.115)	(3.078)
AVERAGE UNIT OVER/(UNDER) RECOVERY 28/07/2017 - 08/08/2017	(62.910)	(60.550)	(58.509)	(60.172)	(59.697)

R/\$ EXCHANGE RATE - (R/\$ 13.2045- 08/08/2017)

EXCHANGE RATE USED IN BASIC FUEL PRICE



INTERNATIONAL PRODUCT PRICES OF BASKET USED IN BASIC FUEL PRICE



BASIC FUEL PRICE IN SA CENTS PER LITRE

