

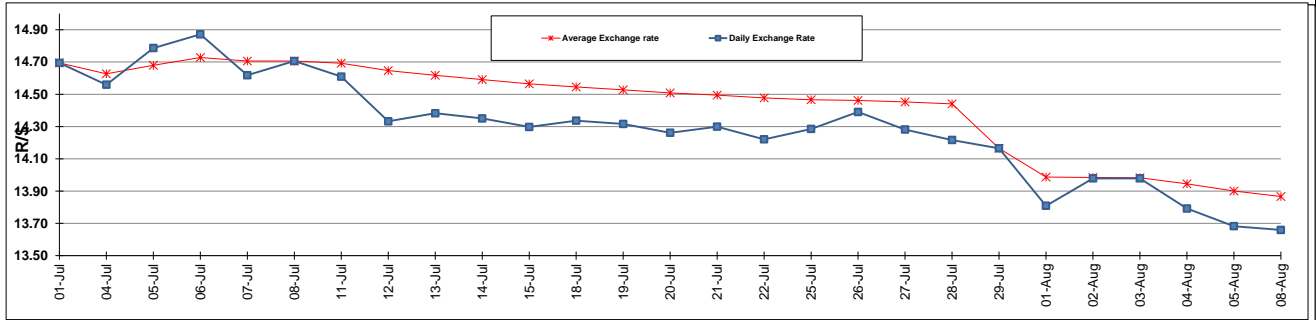
	PETROL 95 ULP	PETROL 93 ULP & LRP	DIESEL 0.05%	DIESEL 0.005%	ILL. PAR.
GAUTENG PUMP PRICE (SA c/l) AS FROM 03/08/2016	1,235.000	1,208.000	-	-	-
WHOLESALE PRICE (SA c/l) AS FROM 03/08/2016	-	-	1,096.870	1,101.270	694.628
SINGLE NATIONAL MAXIMUM RETAIL PRICE	-	-	-	-	891.000
BASIC FUEL PRICE - 08/08/2016 (SA c/l)	482.844	469.249	464.384	467.834	463.446
PRESS RELEASE CONTRIBUTION TO BFP 03/08/2116 - 08/08/2016 (SA c/l)	513.970	496.970	530.630	535.030	533.128
UNIT OVER/(UNDER) RECOVERY (SA c/l) - 08/08/2016	31.126	27.721	66.246	67.196	69.682
AVERAGE BASIC FUEL PRICE 29/07/2116 - 08/08/2016	469.739	455.899	453.731	457.083	456.445
AVERAGE UNIT OVER/(UNDER) RECOVERY 29/07/2116 - 08/08/2016	86.660	83.500	108.613	109.233	104.968

ANALYSIS MOVEMENT OF AVERAGE OVER/(UNDER) RECOVERY

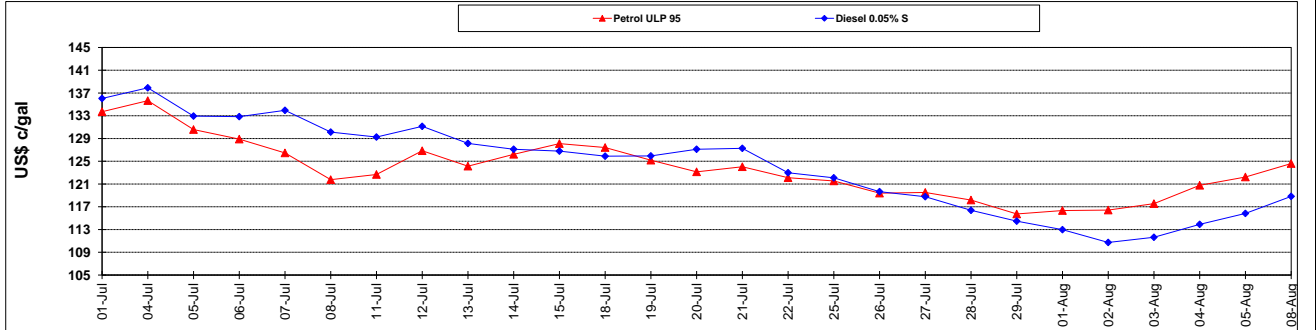
	PETROL 95	PETROL 93	DIESEL 0.05%	DIESEL 0.005%	ILL. PAR.
- MOVEMENT IN INTERNATIONAL PRODUCT PRICES	67.201	64.615	89.818	90.299	86.061
- MOVEMENT IN EXCHANGE RATE	19.459	18.885	18.795	18.934	18.908
AVERAGE UNIT OVER/(UNDER) RECOVERY 29/07/2016 - 08/08/2016	86.660	83.500	108.613	109.233	104.968

R/\$ EXCHANGE RATE - (R/\$ 13.6592 - 08/08/2016)

EXCHANGE RATE USED IN BASIC FUEL PRICE



INTERNATIONAL PRODUCT PRICES OF BASKET USED IN BASIC FUEL PRICE



BASIC FUEL PRICE IN SA CENTS PER LITRE

