

## UPDATE OF THE BASIC FUEL PRICE

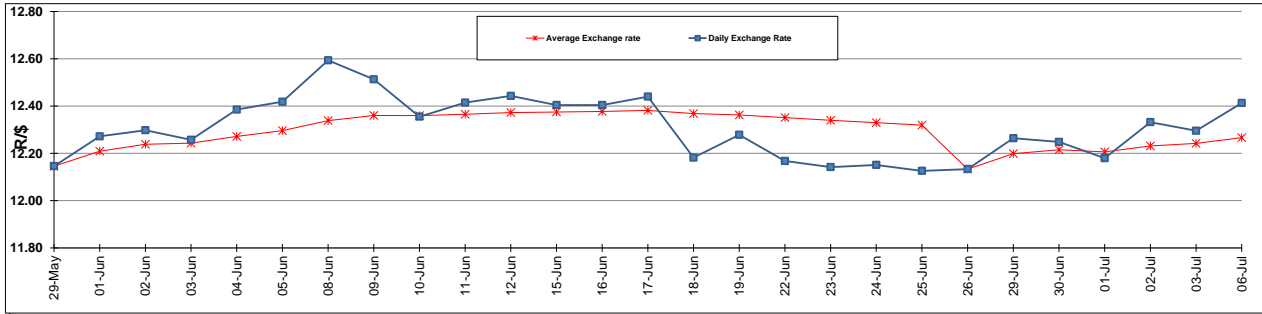
	PETROL 95 ULP	PETROL 93 ULP & LRP	DIESEL 0.05%	DIESEL 0.005%	ILL. PAR.
GAUTENG PUMP PRICE (SA c/l) AS FROM 01/07/2015	1,377.000	1,352.000	-	-	-
WHOLESALE PRICE (SA c/l) AS FROM 01/07/2015	-	-	1,170.790	1,174.190	786.828
SINGLE NATIONAL MAXIMUM RETAIL PRICE	-	-	-	-	1,014.000
BASIC FUEL PRICE - 08/07/2015 (SA c/l)	666.214	650.964	564.971	570.420	550.580
PRESS RELEASE CONTRIBUTION TO BFP 01/07/2015 - 08/07/2015 (SA c/l)	703.650	688.650	642.630	646.030	629.128
UNIT OVER/(UNDER) RECOVERY (SA c/l) - 08/07/2015	37.436	37.686	77.659	75.610	78.548
AVERAGE BASIC FUEL PRICE 26/06/2015 - 08/07/2015	663.599	648.183	593.375	599.905	583.388
AVERAGE UNIT OVER/(UNDER) RECOVERY 26/06/2015 - 08/07/2015	26.384	25.801	47.922	44.791	43.740

### ANALYSIS MOVEMENT OF AVERAGE OVER/(UNDER) RECOVERY

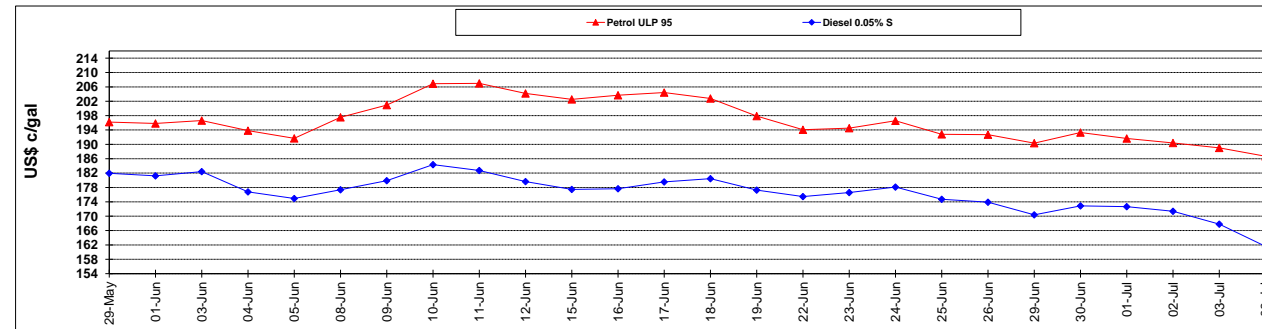
	PETROL 95	PETROL 93	DIESEL 0.05%	DIESEL 0.005%	ILL. PAR.
- MOVEMENT IN INTERNATIONAL PRODUCT PRICES	26.384	25.800	47.922	44.792	43.740
- MOVEMENT IN EXCHANGE RATE	0.000	0.000	0.000	0.000	0.000
AVERAGE UNIT OVER/(UNDER) RECOVERY 26/06/2015 - 08/07/2015	26.384	25.801	47.922	44.791	43.740

### R/\$ EXCHANGE RATE - (R/\$ 12.5265 - 08/07/2015)

#### EXCHANGE RATE USED IN BASIC FUEL PRICE



#### INTERNATIONAL PRODUCT PRICES OF BASKET USED IN BASIC FUEL PRICE



#### BASIC FUEL PRICE IN SA CENTS PER LITRE

