

UPDATE OF THE BASIC FUEL PRICE

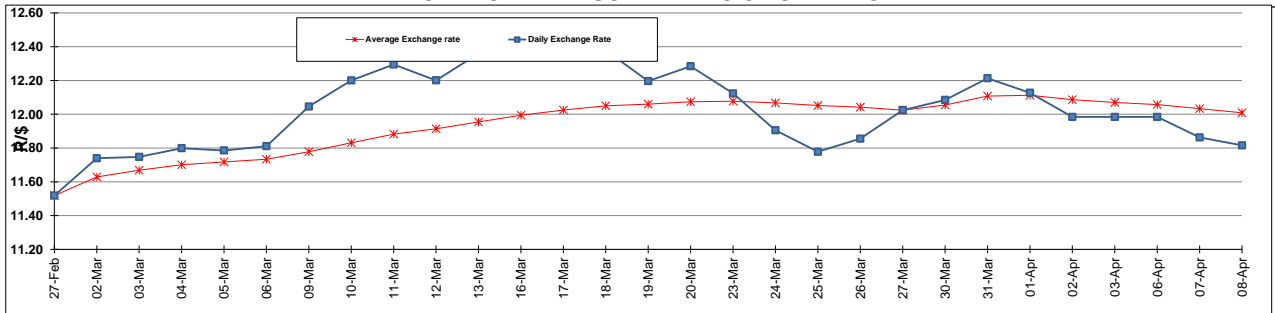
	PETROL 95 ULP	PETROL 93 ULP & LRP	DIESEL 0.05%	DIESEL 0.005%	ILL. PAR.
GAUTENG PUMP PRICE (SA c/l) AS FROM 03/04/2015	1,289.000	1,261.000	-	-	-
WHOLESALE PRICE (SA c/l) AS FROM 03/04/2015	-	-	1,122.790	1,129.190	743.828
SINGLE NATIONAL MAXIMUM RETAIL PRICE	-	-	-	-	957.000
BASIC FUEL PRICE - 08/04/2015 (SA c/l)	567.578	553.836	555.550	561.085	550.134
PRESS RELEASE CONTRIBUTION TO BFP 08/04/2015 - 08/04/2015 (SA c/l)	615.650	597.650	594.630	601.030	586.128
UNIT OVER/(UNDER) RECOVERY (SA c/l) - 08/04/2015	48.072	43.814	39.080	39.945	35.994
AVERAGE BASIC FUEL PRICE 27/03/2015 - 08/04/2015	579.882	564.190	562.418	568.506	558.420
AVERAGE UNIT OVER/(UNDER) RECOVERY 27/03/2015 - 08/04/2015	9.301	8.993	18.878	18.524	20.374

ANALYSIS MOVEMENT OF AVERAGE OVER/(UNDER) RECOVERY

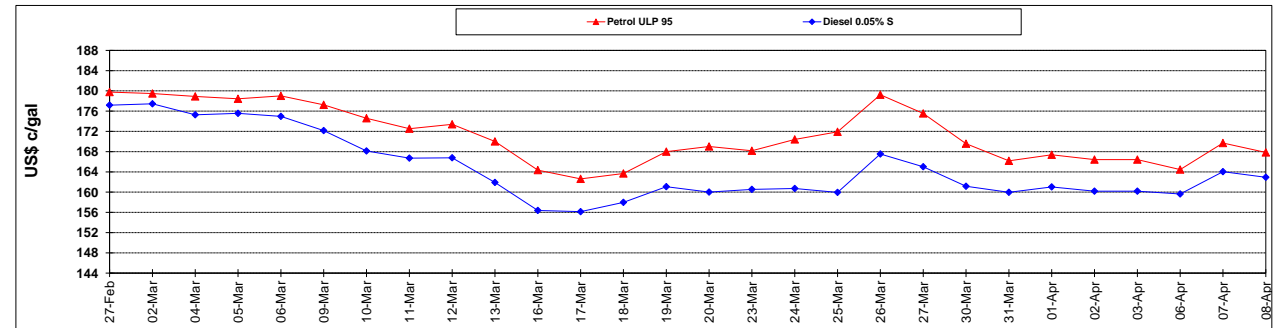
	PETROL 95	PETROL 93	DIESEL 0.05%	DIESEL 0.005%	ILL. PAR.
- MOVEMENT IN INTERNATIONAL PRODUCT PRICES	7.693	7.429	17.319	16.948	18.827
- MOVEMENT IN EXCHANGE RATE	1.608	1.564	1.560	1.576	1.548
AVERAGE UNIT OVER/(UNDER) RECOVERY 27/03/2015 - 08/04/2015	9.301	8.993	18.878	18.524	20.374

R/\$ EXCHANGE RATE - (R/\$ 11.8159 - 08/04/2015)

EXCHANGE RATE USED IN BASIC FUEL PRICE



INTERNATIONAL PRODUCT PRICES OF BASKET USED IN BASIC FUEL PRICE



BASIC FUEL PRICE IN SA CENTS PER LITRE

