

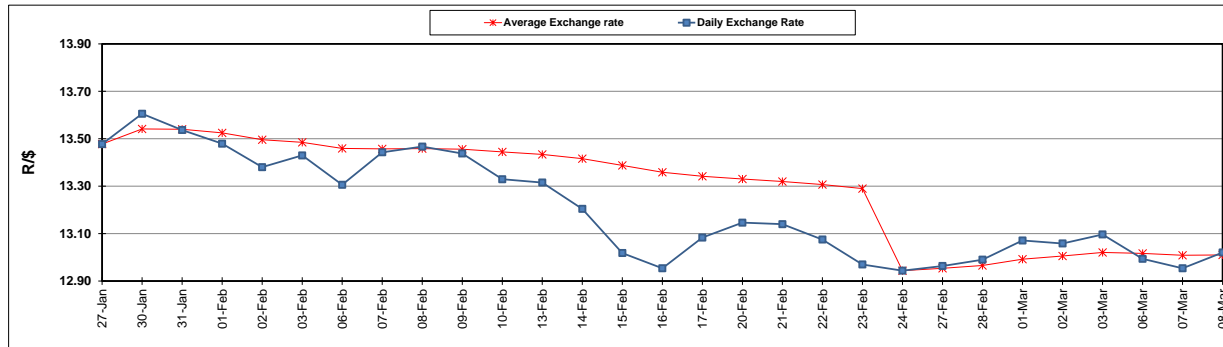
	PETROL 95 ULP	PETROL 93 ULP & LRP	DIESEL 0.05%	DIESEL 0.005%	ILL. PAR.
GAUTENG PUMP PRICE (SA c/l) AS FROM 01/03/2017	1 354.000	1 330.000	-	-	-
WHOLESALE PRICE (SA c/l) AS FROM 01/03/2017	-	-	1 160.830	1 163.230	750.588
SINGLE NATIONAL MAXIMUM RETAIL PRICE	-	-	-	-	966.000
BASIC FUEL PRICE - 08/03/2017 (SA c/l)	565.969	553.628	563.969	566.600	556.504
PRESS RELEASE CONTRIBUTION TO BFP 01/03/2017 - 08/03/2017 (SA c/l)	612.870	598.870	588.630	591.030	583.128
UNIT OVER/(UNDER) RECOVERY (SA c/l) - 08/03/2017	46.901	45.242	24.661	24.430	26.624
AVERAGE BASIC FUEL PRICE 24/02/2017 - 08/03/2017	570.466	559.158	570.735	573.738	562.615
AVERAGE UNIT OVER/(UNDER) RECOVERY 24/02/2017- 08/03/2017	45.071	42.379	18.562	17.958	23.180

ANALYSIS MOVEMENT OF AVERAGE OVER/(UNDER) RECOVERY

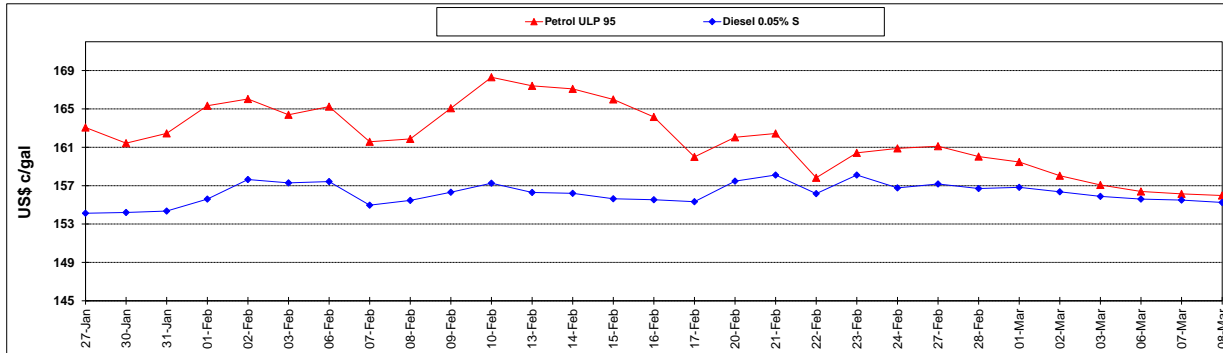
	PETROL 95	PETROL 93	DIESEL 0.05%	DIESEL 0.005%	ILL. PAR.
- MOVEMENT IN INTERNATIONAL PRODUCT PRICES	46.829	44.102	20.321	19.727	24.914
- MOVEMENT IN EXCHANGE RATE	(1.758)	(1.723)	(1.759)	(1.768)	(1.734)
AVERAGE UNIT OVER/(UNDER) RECOVERY 24/02/2017 - 08/03/2017	45.071	42.379	18.562	17.958	23.180

R/\$ EXCHANGE RATE - (R/\$ 13.0203 - 08/03/2017)

EXCHANGE RATE USED IN BASIC FUEL PRICE



INTERNATIONAL PRODUCT PRICES OF BASKET USED IN BASIC FUEL PRICE



BASIC FUEL PRICE IN SA CENTS PER LITRE

