

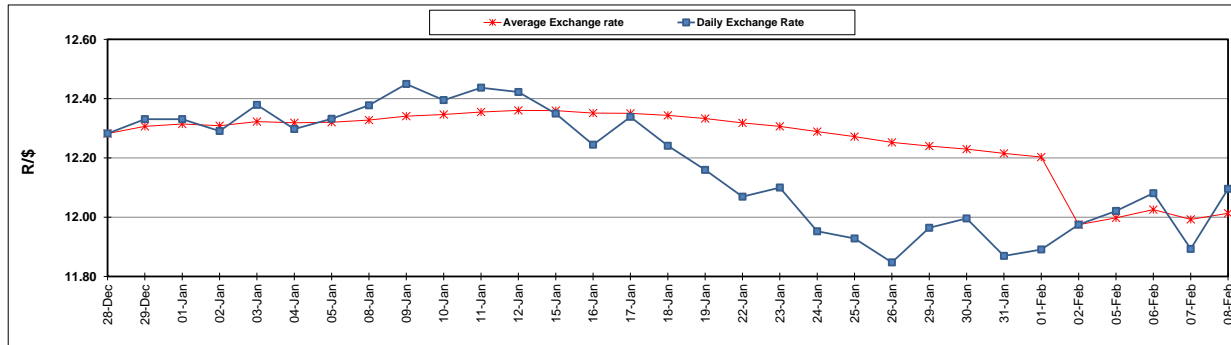
	PETROL 95 ULP	PETROL 93 ULP & LRP	DIESEL 0.05%	DIESEL 0.005%	ILL. PAR.
GAUTENG PUMP PRICE (SA c/l) AS FROM 07/02/2018	1 412.000	1 419.000	-	-	-
WHOLESALE PRICE (SA c/l) AS FROM 07/02/2018	-	-	1 256.630	1 259.030	818.388
SINGLE NATIONAL MAXIMUM RETAIL PRICE	-	-	-	-	1 056.000
BASIC FUEL PRICE - 08/02/2018 (SA c/l)	603.979	588.937	611.677	615.830	630.826
PRESS RELEASE CONTRIBUTION TO BFP 07/02/2018 - 08/02/2018 (SA c/l)	622.170	610.170	645.630	648.030	648.128
UNIT OVER/(UNDER) RECOVERY - 08/02/2018 (SA c/l)	18.191	21.233	33.953	32.200	17.302
AVERAGE BASIC FUEL PRICE 02/02/2018 - 08/02/2018	622.953	608.416	631.090	635.722	648.830
AVERAGE UNIT OVER/(UNDER) RECOVERY 02/02/2018 - 08/02/2018	17.217	19.754	24.740	22.508	10.698

### ANALYSIS MOVEMENT OF AVERAGE OVER/(UNDER) RECOVERY

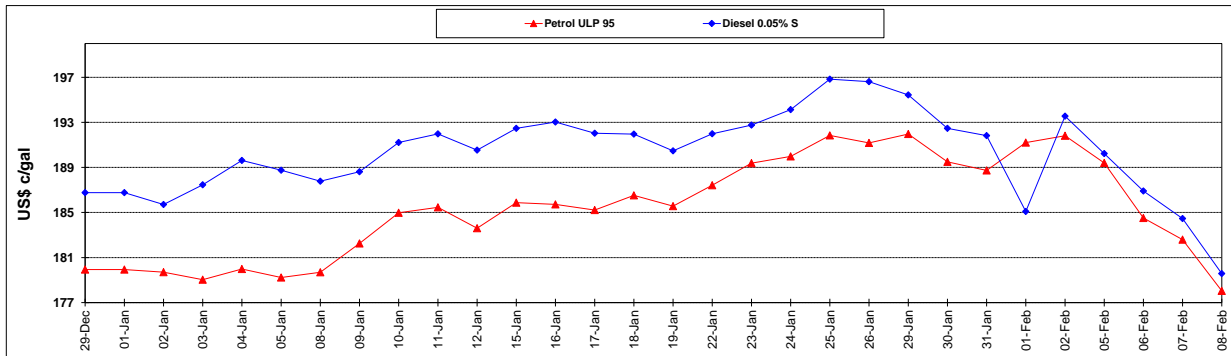
	PETROL 95	PETROL 93	DIESEL 0.05%	DIESEL 0.005%	ILL. PAR.
- MOVEMENT IN INTERNATIONAL PRODUCT PRICES	7.375	10.141	14.769	12.464	0.447
- MOVEMENT IN EXCHANGE RATE	9.842	9.613	9.971	10.044	10.251
AVERAGE UNIT OVER/(UNDER) RECOVERY 02/02/2018 - 08/02/2018	17.217	19.754	24.740	22.508	10.698

**R/\$ EXCHANGE RATE - (R/\$ 12.0955 - 08/02/2018)**

### EXCHANGE RATE USED IN BASIC FUEL PRICE



### INTERNATIONAL PRODUCT PRICES OF BASKET USED IN BASIC FUEL PRICE



### BASIC FUEL PRICE IN SA CENTS PER LITRE

