

UPDATE OF THE BASIC FUEL PRICE

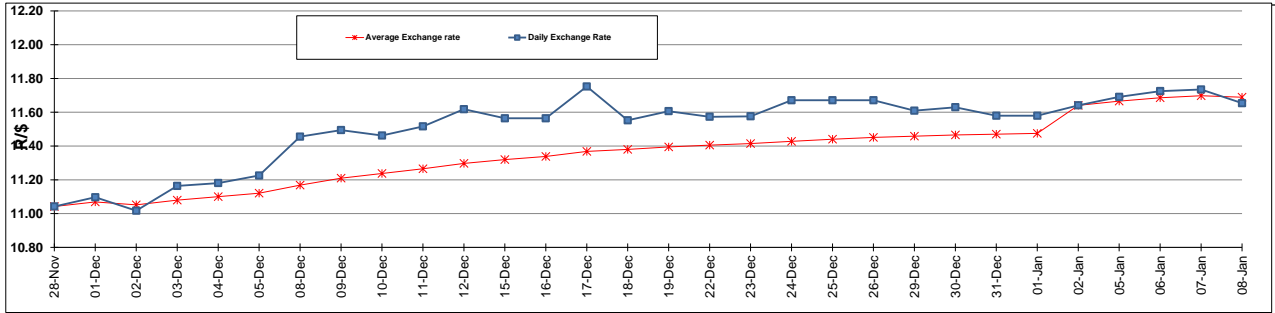
| | PETROL 95 ULP | PETROL 93 ULP & LRP | DIESEL 0.05% | DIESEL 0.005% | ILL. PAR. |
|--|------------------|------------------------|-----------------|------------------|-----------|
| GAUTENG PUMP PRICE (SA c/l) AS FROM 07/01/2015 | 1,124.000 | 1,102.000 | - | - | - |
| WHOLESALE PRICE (SA c/l) AS FROM 07/01/2015 | - | - | 1,028.090 | 1,032.490 | 747.928 |
| SINGLE NATIONAL MAXIMUM RETAIL PRICE | - | - | - | - | 969.000 |
| BASIC FUEL PRICE - 08/01/2015 (SA c/l) | 467.822 | 455.447 | 510.095 | 514.342 | 516.586 |
| PRESS RELEASE CONTRIBUTION TO BFP 08/01/2015 - 08/01/2015 (SA c/l) | 533.250 | 521.250 | 582.630 | 587.030 | 593.128 |
| UNIT OVER/(UNDER) RECOVERY (SA c/l) - 08/01/2015 | 65.428 | 65.803 | 72.535 | 72.688 | 76.542 |
| AVERAGE BASIC FUEL PRICE 02/01/2015 - 08/01/2015 | 481.402 | 469.252 | 526.391 | 530.483 | 532.233 |
| AVERAGE UNIT OVER/(UNDER) RECOVERY 02/01/2015 - 08/01/2015 | 125.648 | 128.198 | 118.639 | 119.547 | 125.695 |

ANALYSIS MOVEMENT OF AVERAGE OVER/(UNDER) RECOVERY

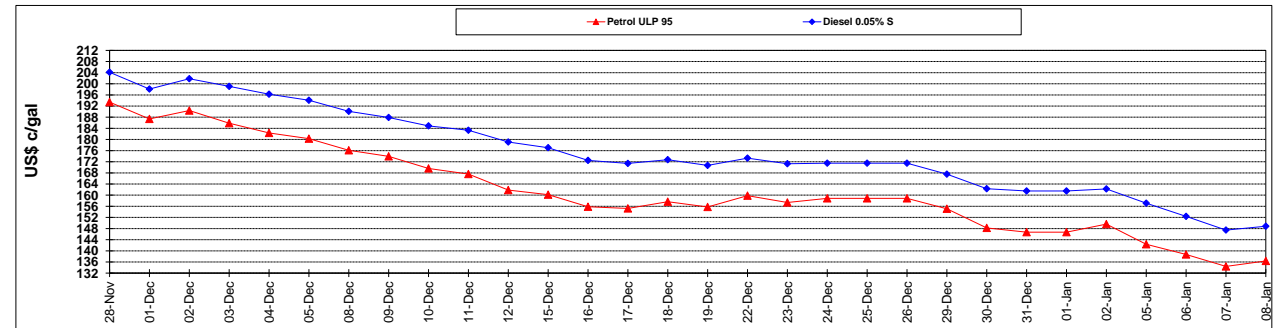
| | PETROL 95 | PETROL 93 | DIESEL 0.05% | DIESEL 0.005% | ILL. PAR. |
|--|-----------|-----------|--------------|---------------|-----------|
| - MOVEMENT IN INTERNATIONAL PRODUCT PRICES | 134.470 | 136.797 | 128.285 | 129.268 | 135.448 |
| - MOVEMENT IN EXCHANGE RATE | (8.822) | (8.599) | (9.646) | (9.721) | (9.753) |
| AVERAGE UNIT OVER/(UNDER) RECOVERY 02/01/2015 - 08/01/2015 | 125.648 | 128.198 | 118.639 | 119.547 | 125.695 |

R/\$ EXCHANGE RATE - (R/\$ 11.6537 - 08/01/2015)

EXCHANGE RATE USED IN BASIC FUEL PRICE



INTERNATIONAL PRODUCT PRICES OF BASKET USED IN BASIC FUEL PRICE



BASIC FUEL PRICE IN SA CENTS PER LITRE

