

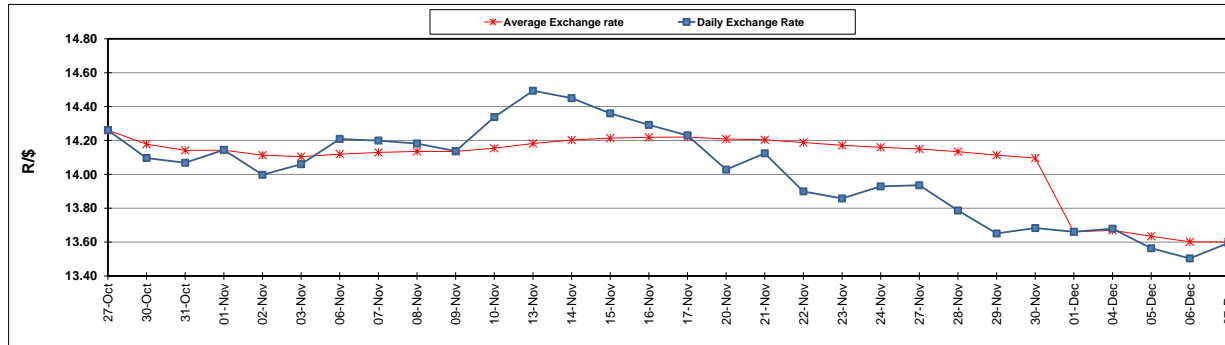
	PETROL 95 ULP	PETROL 93 ULP & LRP	DIESEL 0.05%	DIESEL 0.005%	ILL. PAR.
GAUTENG PUMP PRICE (SA c/l) AS FROM 07/12/2017	1 476.000	1 449.000	-	-	-
WHOLESALE PRICE (SA c/l) AS FROM 07/12/2017	-	-	1 295.630	1 302.030	865.388
SINGLE NATIONAL MAXIMUM RETAIL PRICE	-	-	-	-	1 119.000
BASIC FUEL PRICE - 07/12/2017 (SA c/l)	647.587	634.980	652.244	655.554	653.772
PRESS RELEASE CONTRIBUTION TO BFP 05/12/2017 - 07/12/2017 (SA c/l)	686.170	669.170	684.630	691.030	695.128
UNIT OVER/(UNDER) RECOVERY - 07/12/2017 (SA c/l)	38.583	34.190	32.386	35.476	41.356
AVERAGE BASIC FUEL PRICE 01/12/2017 - 07/12/2017	652.606	638.916	657.400	661.081	661.677
AVERAGE UNIT OVER/(UNDER) RECOVERY 01/12/2017 - 07/12/2017	(6.696)	(10.006)	(9.370)	(4.851)	(10.949)

### ANALYSIS MOVEMENT OF AVERAGE OVER/(UNDER) RECOVERY

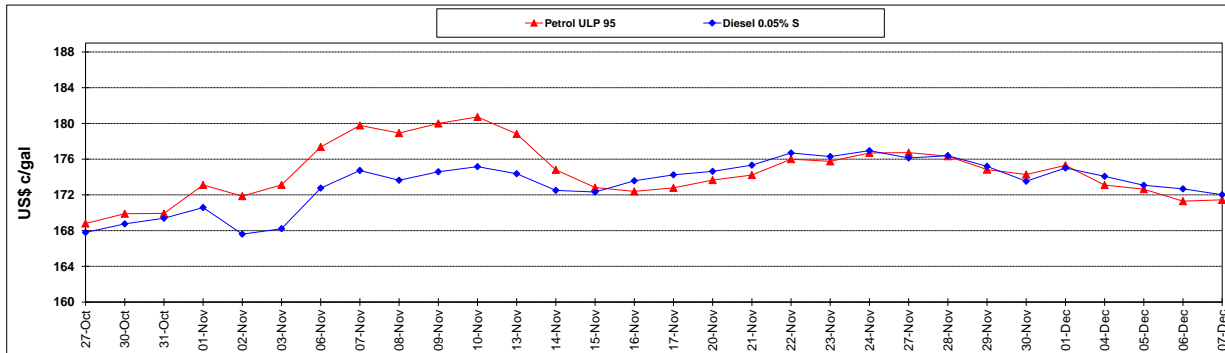
	PETROL 95	PETROL 93	DIESEL 0.05%	DIESEL 0.005%	ILL. PAR.
- MOVEMENT IN INTERNATIONAL PRODUCT PRICES	(30.501)	(33.312)	(33.350)	(28.965)	(35.085)
- MOVEMENT IN EXCHANGE RATE	23.805	23.306	23.980	24.114	24.136
AVERAGE UNIT OVER/(UNDER) RECOVERY 01/12/2017 - 07/12/2017	(6.696)	(10.006)	(9.370)	(4.851)	(10.949)

**R/\$ EXCHANGE RATE - (R/\$ 13.5950 - 07/12/2017)**

### EXCHANGE RATE USED IN BASIC FUEL PRICE



### INTERNATIONAL PRODUCT PRICES OF BASKET USED IN BASIC FUEL PRICE



### BASIC FUEL PRICE IN SA CENTS PER LITRE

