

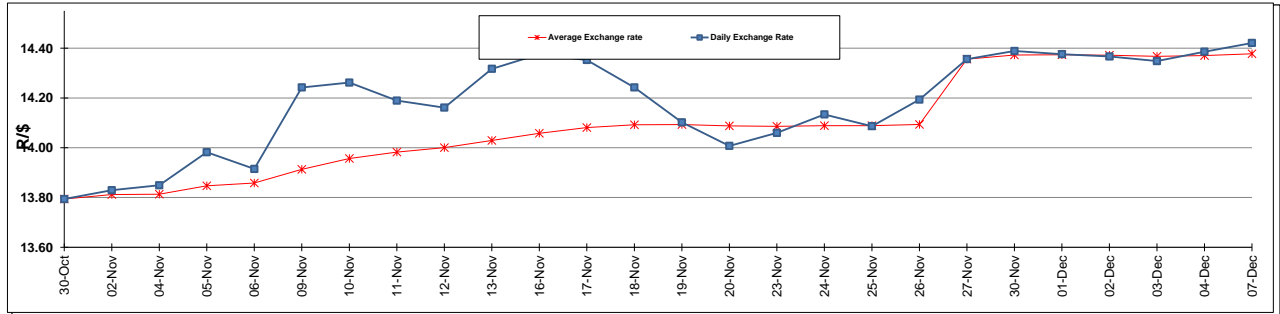
	PETROL 95 ULP	PETROL 93 ULP & LRP	DIESEL 0.05%	DIESEL 0.005%	ILL. PAR.
GAUTENG PUMP PRICE (SA c/l) AS FROM 02/12/2015	1 240.000	1 209.000	-	-	-
WHOLESALE PRICE (SA c/l) AS FROM 02/12/2015	-	-	1 081.170	1 088.570	710.028
SINGLE NATIONAL MAXIMUM RETAIL PRICE	-	-	-	-	912.000
BASIC FUEL PRICE - 07/12/2015 (SA c/l)	534.028	518.416	496.897	501.979	498.836
PRESS RELEASE CONTRIBUTION TO BFP 02/12/2015 - 07/12/2015 (SA c/l)	553.970	532.970	550.630	558.030	550.128
UNIT OVER/(UNDER) RECOVERY (SA c/l) - 07/12/2015	19.942	14.554	53.733	56.051	51.292
AVERAGE BASIC FUEL PRICE 27/11/2015 - 07/12/2015	554.121	538.364	520.401	525.719	521.530
AVERAGE UNIT OVER/(UNDER) RECOVERY 27/11/2015 - 07/12/2015	2.806	(2.437)	32.800	34.025	29.455

ANALYSIS MOVEMENT OF AVERAGE OVER/(UNDER) RECOVERY

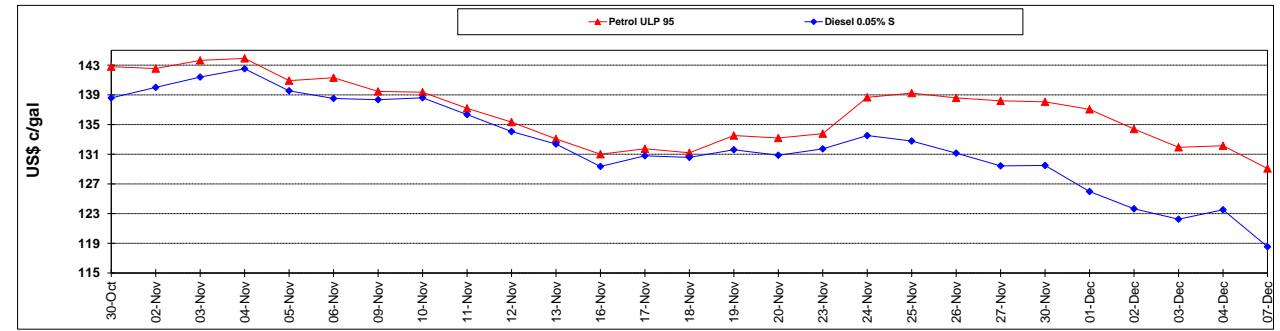
	PETROL 95	PETROL 93	DIESEL 0.05%	DIESEL 0.005%	ILL. PAR.
- MOVEMENT IN INTERNATIONAL PRODUCT PRICES	13.740	8.186	43.069	44.399	39.746
- MOVEMENT IN EXCHANGE RATE	(10.934)	(10.623)	(10.269)	(10.374)	(10.291)
AVERAGE UNIT OVER/(UNDER) RECOVERY 27/11/2015 - 07/12/2015	2.806	(2.437)	32.800	34.025	29.455

R/\$ EXCHANGE RATE - (R/\$ 14.4208 - 07/12/2015)

EXCHANGE RATE USED IN BASIC FUEL PRICE



INTERNATIONAL PRODUCT PRICES OF BASKET USED IN BASIC FUEL PRICE



BASIC FUEL PRICE IN SA CENTS PER LITRE

