

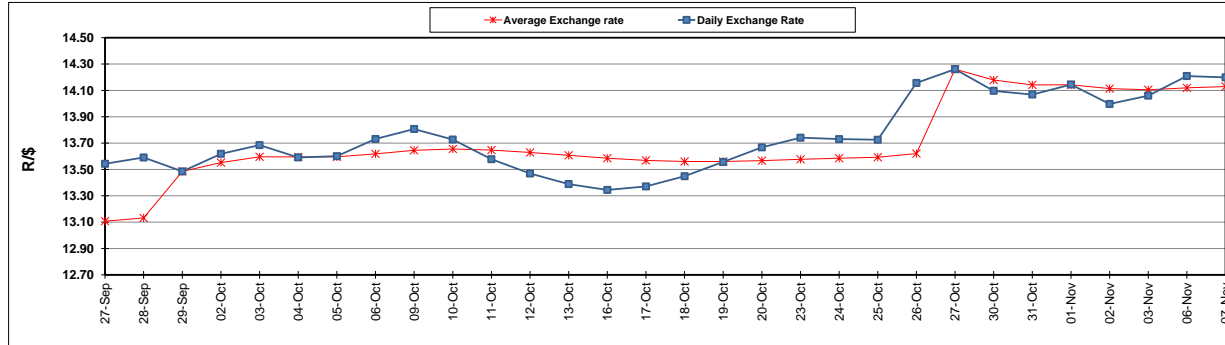
	PETROL 95 ULP	PETROL 93 ULP & LRP	DIESEL 0.05%	DIESEL 0.005%	ILL. PAR.
GAUTENG PUMP PRICE (SA c/l) AS FROM 01/11/2017	1 405.000	1 378.000	-	-	-
WHOLESALE PRICE (SA c/l) AS FROM 01/11/2017	-	-	1 235.330	1 244.730	792.088
SINGLE NATIONAL MAXIMUM RETAIL PRICE	-	-	-	-	1 021.000
BASIC FUEL PRICE - 07/11/2017 (SA c/l)	709.842	692.846	693.736	700.261	706.894
PRESS RELEASE CONTRIBUTION TO BFP 01/11/2017 - 07/11/2017 (SA c/l)	619.070	602.070	623.630	633.030	621.128
UNIT OVER/(UNDER) RECOVERY (SA c/l) - 07/11/2017	(90.772)	(90.776)	(70.106)	(67.231)	(85.766)
AVERAGE BASIC FUEL PRICE 27/10/2017 - 07/11/2017	679.633	663.532	671.135	679.255	679.630
AVERAGE UNIT OVER/(UNDER) RECOVERY 27/10/2017 - 07/11/2017	(62.063)	(62.962)	(56.130)	(56.350)	(66.377)

### ANALYSIS MOVEMENT OF AVERAGE OVER/(UNDER) RECOVERY

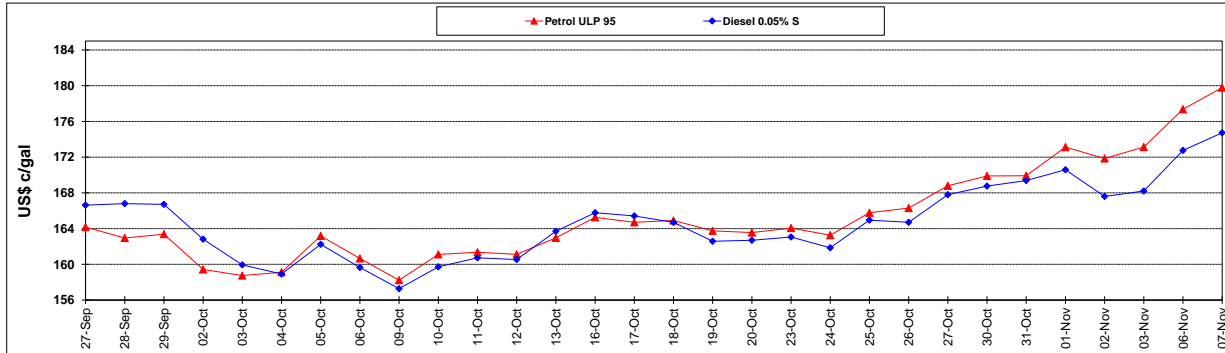
	PETROL 95	PETROL 93	DIESEL 0.05%	DIESEL 0.005%	ILL. PAR.
- MOVEMENT IN INTERNATIONAL PRODUCT PRICES	(37.613)	(39.092)	(31.986)	(31.914)	(41.927)
- MOVEMENT IN EXCHANGE RATE	(24.450)	(23.870)	(24.144)	(24.436)	(24.450)
AVERAGE UNIT OVER/(UNDER) RECOVERY 27/10/2017 - 07/11/2017	(62.063)	(62.962)	(56.130)	(56.350)	(66.377)

R/\$ EXCHANGE RATE - (R/\$ 14.1990 - 07/11/2017)

### EXCHANGE RATE USED IN BASIC FUEL PRICE



### INTERNATIONAL PRODUCT PRICES OF BASKET USED IN BASIC FUEL PRICE



### BASIC FUEL PRICE IN SA CENTS PER LITRE

