

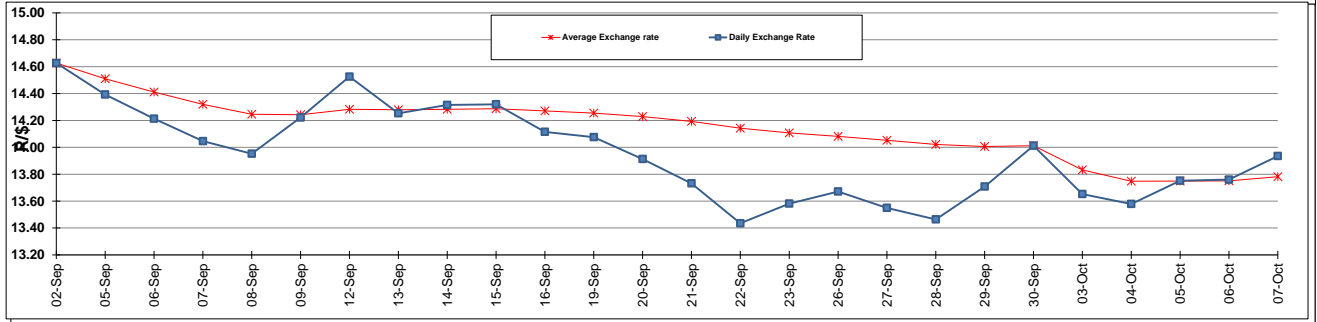
	PETROL 95 ULP	PETROL 93 ULP & LRP	DIESEL 0.05%	DIESEL 0.005%	ILL. PAR.
GAUTENG PUMP PRICE (SA c/l) AS FROM 05/10/2016	1 260.000	1 234.000	-	-	-
WHOLESALE PRICE (SA c/l) AS FROM 05/10/2016	-	-	1 071.870	1 075.270	669.628
SINGLE NATIONAL MAXIMUM RETAIL PRICE	-	-	-	-	858.000
BASIC FUEL PRICE - 07/10/2016 (SA c/l)	577.632	563.707	569.816	572.689	566.641
PRESS RELEASE CONTRIBUTION TO BFP 05/10/2016 - 07/10/2016 (SA c/l)	538.970	522.970	505.630	509.030	508.128
UNIT OVER/(UNDER) RECOVERY (SA c/l) - 07/10/2016	(38.662)	(40.737)	(64.186)	(63.659)	(58.513)
AVERAGE BASIC FUEL PRICE 30/09/2016 - 07/10/2016	562.501	548.568	550.352	553.404	547.097
AVERAGE UNIT OVER/(UNDER) RECOVERY 30/09/2016 - 07/10/2016	(45.031)	(47.598)	(56.222)	(55.874)	(49.969)

ANALYSIS MOVEMENT OF AVERAGE OVER/(UNDER) RECOVERY

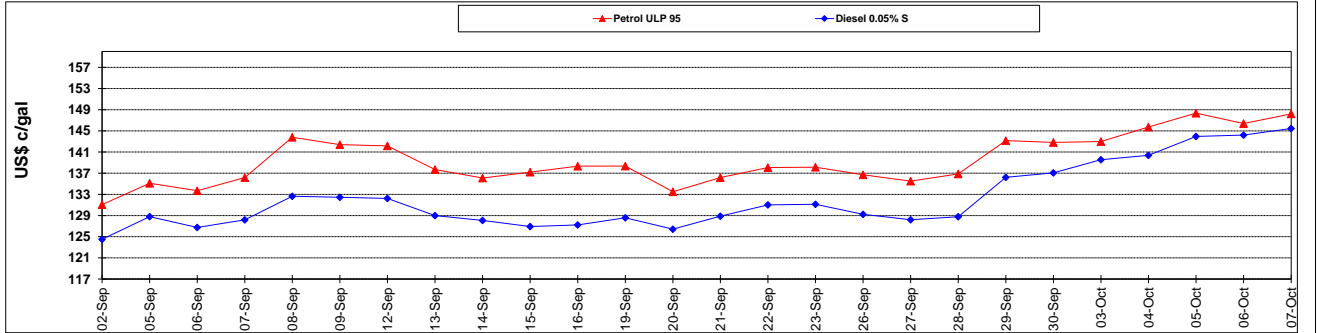
	PETROL 95	PETROL 93	DIESEL 0.05%	DIESEL 0.005%	ILL. PAR.
- MOVEMENT IN INTERNATIONAL PRODUCT PRICES	(54.169)	(56.510)	(65.163)	(64.865)	(58.857)
- MOVEMENT IN EXCHANGE RATE	9.138	8.912	8.941	8.991	8.888
AVERAGE UNIT OVER/(UNDER) RECOVERY 30/09/2016 - 07/10/2016	(45.031)	(47.598)	(56.222)	(55.874)	(49.969)

R/\$ EXCHANGE RATE - (R/\$ 13.9350 - 07/10/2016)

EXCHANGE RATE USED IN BASIC FUEL PRICE



INTERNATIONAL PRODUCT PRICES OF BASKET USED IN BASIC FUEL PRICE



BASIC FUEL PRICE IN SA CENTS PER LITRE

