

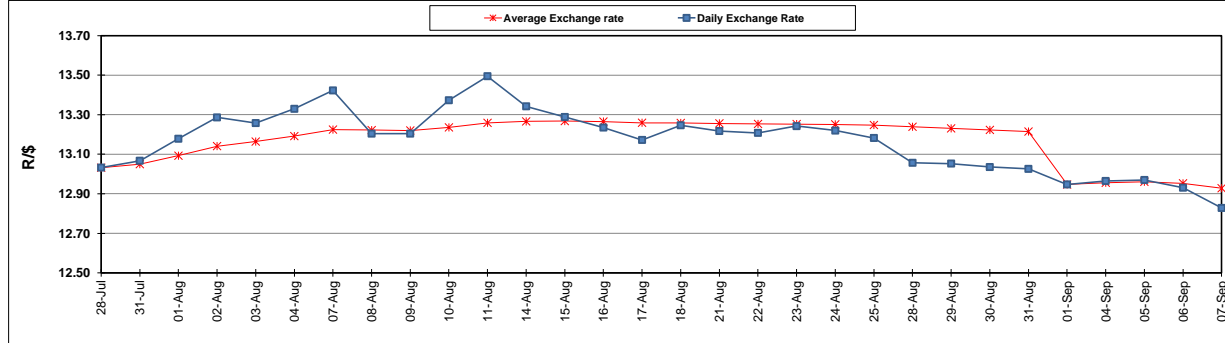
	PETROL 95 ULP	PETROL 93 ULP & LRP	DIESEL 0.05%	DIESEL 0.005%	ILL. PAR.
GAUTENG PUMP PRICE (SA c/l) AS FROM 06/09/2017	1 372.000	1 349.000	-	-	-
WHOLESALE PRICE (SA c/l) AS FROM 06/09/2017	-	-	1 170.330	1 175.730	732.088
SINGLE NATIONAL MAXIMUM RETAIL PRICE	-	-	-	-	941.000
BASIC FUEL PRICE - 07/09/2017 (SA c/l)	594.787	577.370	581.896	588.065	575.708
PRESS RELEASE CONTRIBUTION TO BFP 06/09/2017 - 07/09/2017 (SA c/l)	586.070	573.070	558.630	564.030	561.128
UNIT OVER/(UNDER) RECOVERY (SA c/l) - 07/09/2017	(8.717)	(4.300)	(23.266)	(24.035)	(14.580)
AVERAGE BASIC FUEL PRICE 01/09/2017 - 07/09/2017	602.869	586.882	573.199	578.949	572.369
AVERAGE UNIT OVER/(UNDER) RECOVERY 01/09/2017 - 07/09/2017	(54.239)	(51.252)	(40.969)	(41.319)	(40.641)

### ANALYSIS MOVEMENT OF AVERAGE OVER/(UNDER) RECOVERY

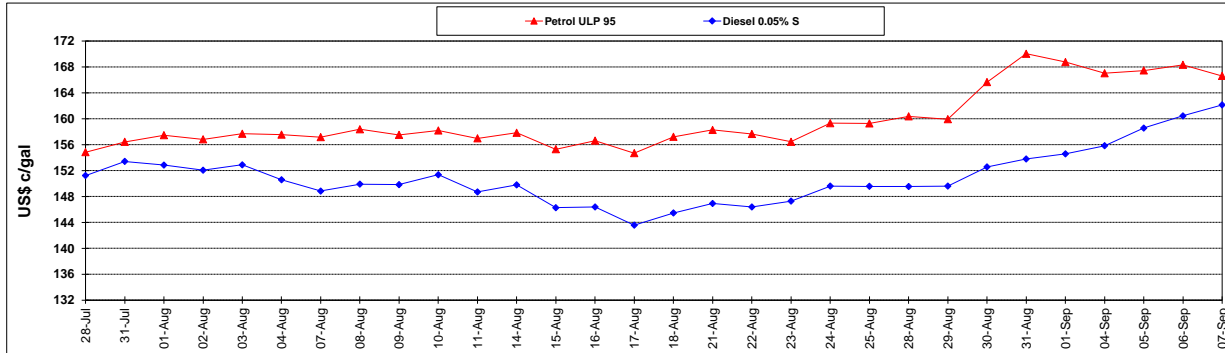
	PETROL 95	PETROL 93	DIESEL 0.05%	DIESEL 0.005%	ILL. PAR.
- MOVEMENT IN INTERNATIONAL PRODUCT PRICES	(67.622)	(64.281)	(53.694)	(54.171)	(53.347)
- MOVEMENT IN EXCHANGE RATE	13.383	13.029	12.725	12.852	12.706
AVERAGE UNIT OVER/(UNDER) RECOVERY 01/09/2017 - 07/09/2017	(54.239)	(51.252)	(40.969)	(41.319)	(40.641)

**R/\$ EXCHANGE RATE - (R/\$ 12.8283 - 07/09/2017)**

### EXCHANGE RATE USED IN BASIC FUEL PRICE



### INTERNATIONAL PRODUCT PRICES OF BASKET USED IN BASIC FUEL PRICE



### BASIC FUEL PRICE IN SA CENTS PER LITRE

