

UPDATE OF THE BASIC FUEL PRICE

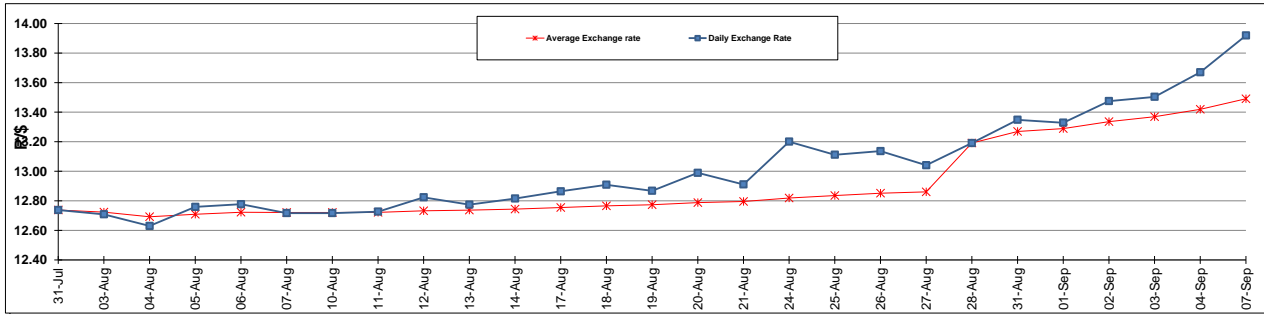
	PETROL 95 ULP	PETROL 93 ULP & LRP	DIESEL 0.05%	DIESEL 0.005%	ILL. PAR.
GAUTENG PUMP PRICE (SA c/l) AS FROM 02/09/2015	1,257.000	1,232.000	-	-	-
WHOLESALE PRICE (SA c/l) AS FROM 02/09/2015	-	-	1,040.970	1,049.370	661.828
SINGLE NATIONAL MAXIMUM RETAIL PRICE	-	-	-	-	847.000
BASIC FUEL PRICE - 07/09/2015 (SA c/l)	616.744	591.406	591.032	597.918	579.655
PRESS RELEASE CONTRIBUTION TO BFP 02/09/2015 - 07/09/2015 (SA c/l)	578.870	563.870	512.630	521.030	504.128
UNIT OVER/(UNDER) RECOVERY (SA c/l) - 07/09/2015	(37.874)	(27.536)	(78.402)	(76.888)	(75.527)
AVERAGE BASIC FUEL PRICE 28/08/2015 - 07/09/2015	597.636	574.178	575.213	582.538	563.981
AVERAGE UNIT OVER/(UNDER) RECOVERY 28/08/2015 - 07/09/2015	12.777	21.235	(39.440)	(39.651)	(36.281)

ANALYSIS MOVEMENT OF AVERAGE OVER/(UNDER) RECOVERY

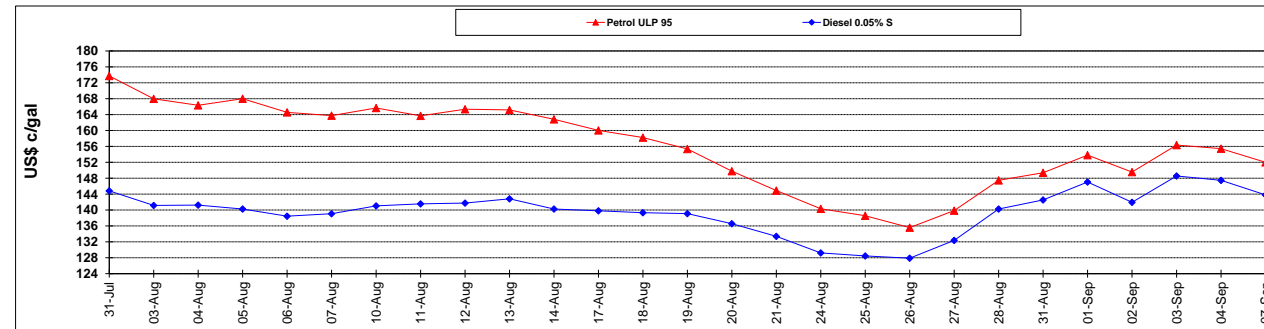
	PETROL 95	PETROL 93	DIESEL 0.05%	DIESEL 0.005%	ILL. PAR.
- MOVEMENT IN INTERNATIONAL PRODUCT PRICES	40.681	48.044	(12.583)	(12.452)	(9.949)
- MOVEMENT IN EXCHANGE RATE	(27.904)	(26.809)	(26.857)	(27.199)	(26.333)
AVERAGE UNIT OVER/(UNDER) RECOVERY 28/08/2015 - 07/09/2015	12.777	21.235	(39.440)	(39.651)	(36.281)

R/\$ EXCHANGE RATE - (R/\$ 13.9190 - 07/09/2015)

EXCHANGE RATE USED IN BASIC FUEL PRICE



INTERNATIONAL PRODUCT PRICES OF BASKET USED IN BASIC FUEL PRICE



BASIC FUEL PRICE IN SA CENTS PER LITRE

