

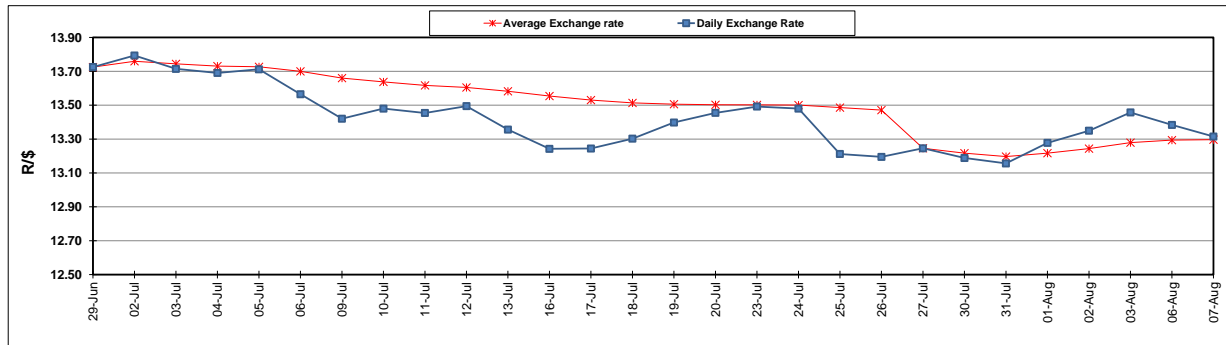
	PETROL 95 ULP	PETROL 93 ULP & LRP	DIESEL 0.05%	DIESEL 0.005%	ILL. PAR.
GAUTENG PUMP PRICE (SA c/l) AS FROM 04/08/2018	1 603.000	1 582.000	-	-	-
WHOLESALE PRICE (SA c/l) AS FROM 04/08/2018	-	-	1 440.830	1 445.230	953.088
SINGLE NATIONAL MAXIMUM RETAIL PRICE	-	-	-	-	1 233.000
BASIC FUEL PRICE - 07/08/2018 (SA c/l)	747.805	735.229	762.564	766.881	768.813
PRESS RELEASE CONTRIBUTION TO BFP 01/08/2018 - 07/08/2018 (SA c/l)	751.070	739.070	767.630	772.030	780.128
UNIT OVER/(UNDER) RECOVERY - 07/08/2018 (SA c/l)	3.265	3.841	5.066	5.149	11.315
AVERAGE BASIC FUEL PRICE 27/07/2018 - 07/08/2018	744.294	731.979	755.640	759.745	764.134
AVERAGE UNIT OVER/(UNDER) RECOVERY 27/06/2018 - 07/08/2018	6.401	6.716	13.490	13.785	14.494

ANALYSIS MOVEMENT OF AVERAGE OVER/(UNDER) RECOVERY

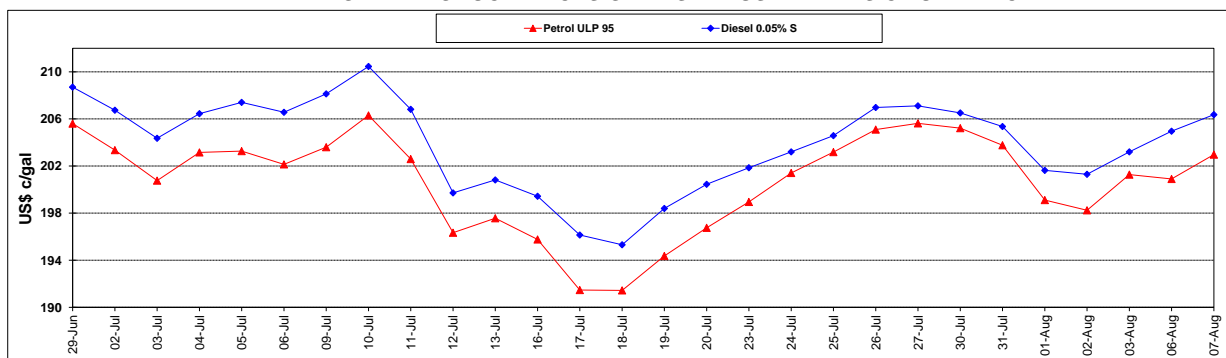
	PETROL 95	PETROL 93	DIESEL 0.05%	DIESEL 0.005%	ILL. PAR.
- MOVEMENT IN INTERNATIONAL PRODUCT PRICES	(3.372)	(2.896)	3.568	3.809	4.460
- MOVEMENT IN EXCHANGE RATE	9.773	9.612	9.922	9.976	10.034
AVERAGE UNIT OVER/(UNDER) RECOVERY 27/07/2018 - 07/08/2018	6.401	6.716	13.490	13.785	14.494

R/\$ EXCHANGE RATE - (R/\$13.3150 - 07/08/2018)

EXCHANGE RATE USED IN BASIC FUEL PRICE



INTERNATIONAL PRODUCT PRICES OF BASKET USED IN BASIC FUEL PRICE



BASIC FUEL PRICE IN SA CENTS PER LITRE

