

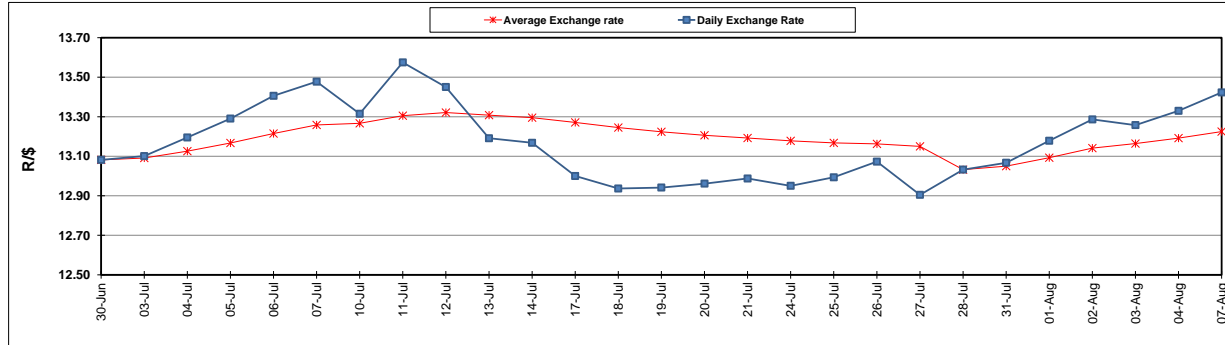
	PETROL 95 ULP	PETROL 93 ULP & LRP	DIESEL 0.05%	DIESEL 0.005%	ILL. PAR.
GAUTENG PUMP PRICE (SA c/l) AS FROM 02/08/2017	1 305.000	1 282.000	-	-	-
WHOLESALE PRICE (SA c/l) AS FROM 02/08/2017	-	-	1 126.330	1 131.730	683.088
SINGLE NATIONAL MAXIMUM RETAIL PRICE	-	-	-	-	876.000
BASIC FUEL PRICE - 07/08/2017 (SA c/l)	588.616	573.796	561.382	568.419	565.380
PRESS RELEASE CONTRIBUTION TO BFP 02/08/2017 - 07/08/2017 (SA c/l)	523.670	510.670	514.630	520.030	512.128
UNIT OVER/(UNDER) RECOVERY (SA c/l) - 07/08/2017	(64.946)	(63.126)	(46.752)	(48.389)	(53.252)
AVERAGE BASIC FUEL PRICE 28/07/2017 - 07/08/2017	578.888	563.647	563.137	569.773	562.461
AVERAGE UNIT OVER/(UNDER) RECOVERY 28/07/2017 - 07/08/2017	(63.361)	(61.120)	(60.935)	(62.600)	(61.476)

### ANALYSIS MOVEMENT OF AVERAGE OVER/(UNDER) RECOVERY

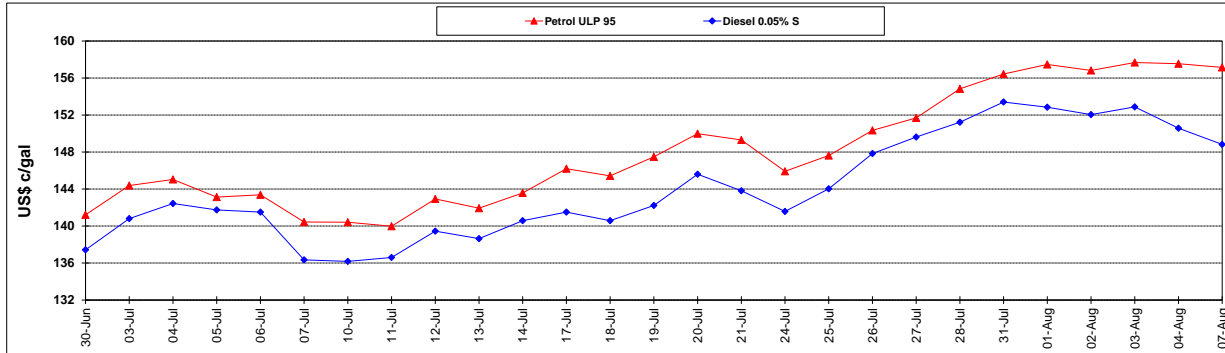
	PETROL 95	PETROL 93	DIESEL 0.05%	DIESEL 0.005%	ILL. PAR.
- MOVEMENT IN INTERNATIONAL PRODUCT PRICES	(60.078)	(57.924)	(57.742)	(59.369)	(58.286)
- MOVEMENT IN EXCHANGE RATE	(3.283)	(3.196)	(3.194)	(3.231)	(3.190)
AVERAGE UNIT OVER/(UNDER) RECOVERY 28/07/2017 - 07/08/2017	(63.361)	(61.120)	(60.936)	(62.600)	(61.476)

### R/\$ EXCHANGE RATE - (R/\$ 13.4230- 07/08/2017)

#### EXCHANGE RATE USED IN BASIC FUEL PRICE



#### INTERNATIONAL PRODUCT PRICES OF BASKET USED IN BASIC FUEL PRICE



#### BASIC FUEL PRICE IN SA CENTS PER LITRE

