

UPDATE OF THE BASIC FUEL PRICE

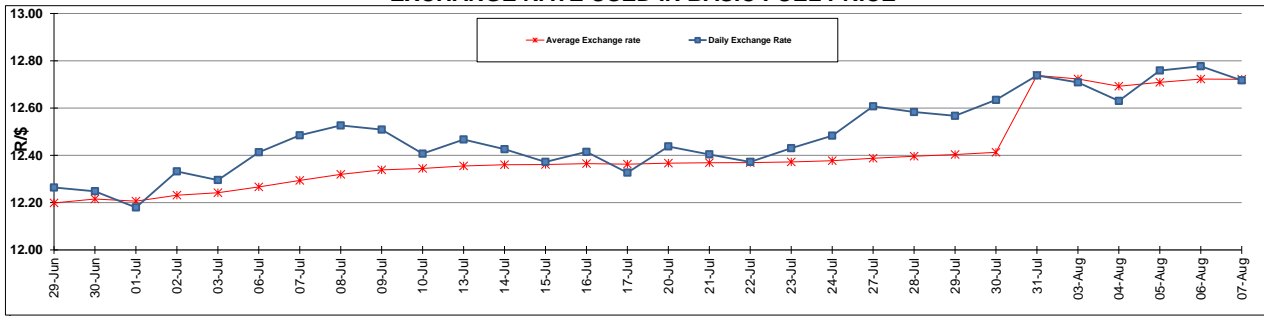
	PETROL 95 ULP	PETROL 93 ULP & LRP	DIESEL 0.05%	DIESEL 0.005%	ILL. PAR.
GAUTENG PUMP PRICE (SA c/l) AS FROM 05/08/2015	1,326.000	1,301.000	-	-	-
WHOLESALE PRICE (SA c/l) AS FROM 05/08/2015	-	-	1,094.970	1,100.370	716.828
SINGLE NATIONAL MAXIMUM RETAIL PRICE	-	-	-	-	921.000
BASIC FUEL PRICE - 07/08/2015 (SA c/l)	602.394	580.041	523.118	532.068	509.579
PRESS RELEASE CONTRIBUTION TO BFP 05/08/2015 - 07/08/2015 (SA c/l)	652.470	637.470	566.630	572.030	559.128
UNIT OVER/(UNDER) RECOVERY (SA c/l) - 07/08/2015	50.076	57.429	43.512	39.962	49.549
AVERAGE BASIC FUEL PRICE 31/07/2015 - 07/08/2015	613.933	591.178	528.223	536.210	517.460
AVERAGE UNIT OVER/(UNDER) RECOVERY 31/07/2015 - 07/08/2015	64.127	71.882	76.408	72.820	76.669

ANALYSIS MOVEMENT OF AVERAGE OVER/(UNDER) RECOVERY

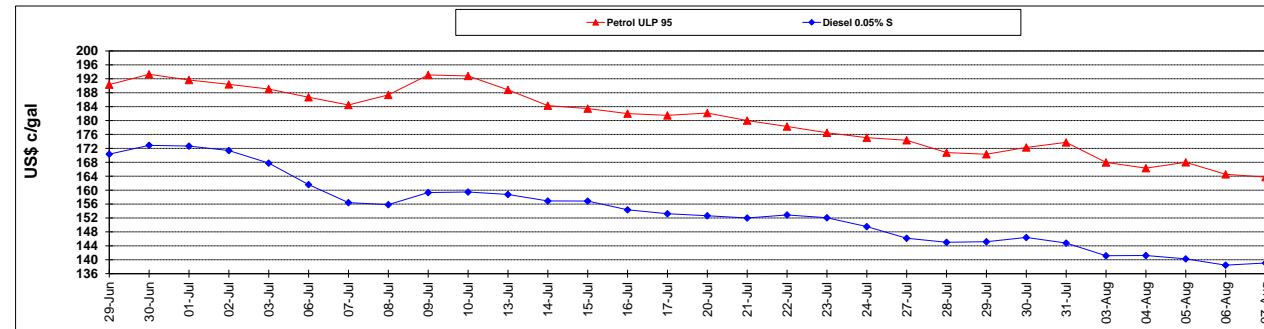
	PETROL 95	PETROL 93	DIESEL 0.05%	DIESEL 0.005%	ILL. PAR.
- MOVEMENT IN INTERNATIONAL PRODUCT PRICES	83.527	90.563	93.099	89.764	93.020
- MOVEMENT IN EXCHANGE RATE	(19.400)	(18.681)	(16.692)	(16.944)	(16.352)
AVERAGE UNIT OVER/(UNDER) RECOVERY 31/07/2015 - 07/08/2015	64.127	71.882	76.408	72.820	76.669

R/\$ EXCHANGE RATE - (R/\$ 12.7170 - 07/08/2015)

EXCHANGE RATE USED IN BASIC FUEL PRICE



INTERNATIONAL PRODUCT PRICES OF BASKET USED IN BASIC FUEL PRICE



BASIC FUEL PRICE IN SA CENTS PER LITRE

