

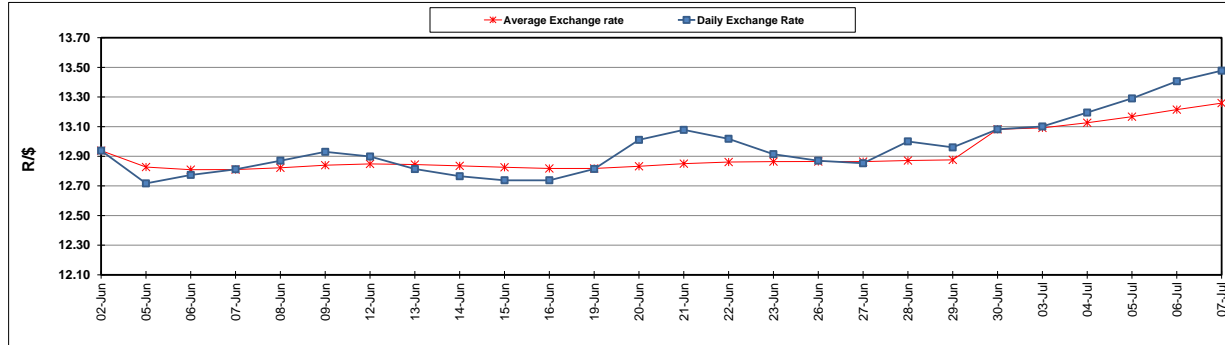
	PETROL 95 ULP	PETROL 93 ULP & LRP	DIESEL 0.05%	DIESEL 0.005%	ILL. PAR.
GAUTENG PUMP PRICE (SA c/l) AS FROM 05/07/2017	1 286.000	1 263.000	-	-	-
WHOLESALE PRICE (SA c/l) AS FROM 05/07/2017	-	-	1 097.330	1 101.730	657.088
SINGLE NATIONAL MAXIMUM RETAIL PRICE	-	-	-	-	841.000
BASIC FUEL PRICE - 07/07/2017 (SA c/l)	530.651	514.121	518.371	523.980	517.260
PRESS RELEASE CONTRIBUTION TO BFP 05/07/2017 - 07/07/2017 (SA c/l)	504.670	491.670	485.630	490.030	486.128
UNIT OVER/(UNDER) RECOVERY (SA c/l) - 07/07/2017	(25.981)	(22.451)	(32.741)	(33.950)	(31.132)
AVERAGE BASIC FUEL PRICE 30/06/2017 - 07/07/2017	531.569	515.769	523.822	529.175	522.574
AVERAGE UNIT OVER/(UNDER) RECOVERY 30/06/2017 - 07/07/2017	7.101	10.401	(8.192)	(9.145)	(7.946)

ANALYSIS MOVEMENT OF AVERAGE OVER/(UNDER) RECOVERY

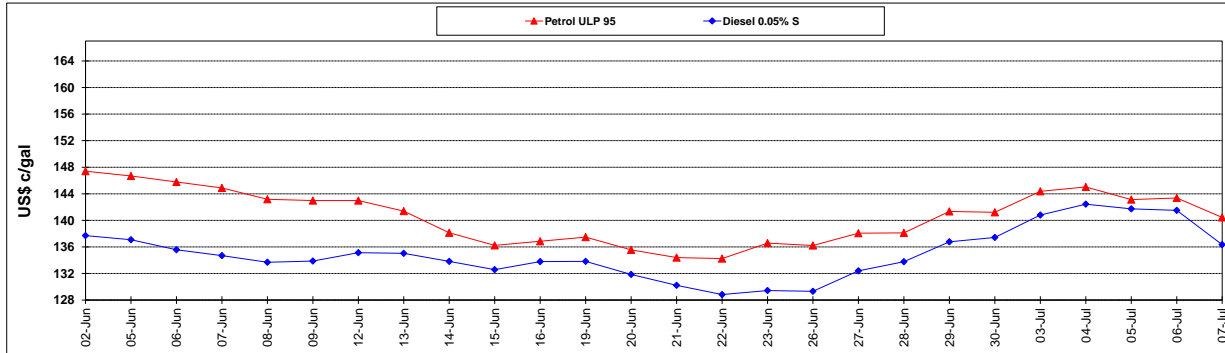
	PETROL 95	PETROL 93	DIESEL 0.05%	DIESEL 0.005%	ILL. PAR.
- MOVEMENT IN INTERNATIONAL PRODUCT PRICES	22.456	25.300	6.940	6.141	7.150
- MOVEMENT IN EXCHANGE RATE	(15.355)	(14.899)	(15.132)	(15.286)	(15.096)
AVERAGE UNIT OVER/(UNDER) RECOVERY 30/06/2017 - 07/07/2017	7.101	10.401	(8.192)	(9.145)	(7.946)

R/\$ EXCHANGE RATE - (R/\$ 13.4775 - 07/07/2017)

EXCHANGE RATE USED IN BASIC FUEL PRICE



INTERNATIONAL PRODUCT PRICES OF BASKET USED IN BASIC FUEL PRICE



BASIC FUEL PRICE IN SA CENTS PER LITRE

