

### UPDATE OF THE BASIC FUEL PRICE

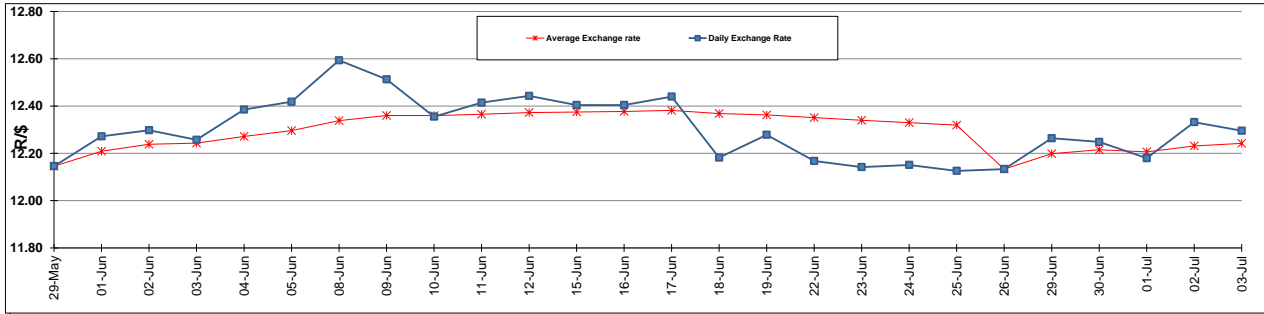
	PETROL 95 ULP	PETROL 93 ULP & LRP	DIESEL 0.05%	DIESEL 0.005%	ILL. PAR.
GAUTENG PUMP PRICE (SA c/l) AS FROM 01/07/2015	1,377.000	1,352.000	-	-	-
WHOLESALE PRICE (SA c/l) AS FROM 01/07/2015	-	-	1,170.790	1,174.190	786.828
SINGLE NATIONAL MAXIMUM RETAIL PRICE	-	-	-	-	1,014.000
BASIC FUEL PRICE - 07/07/2015 (SA c/l)	654.375	639.176	565.026	571.490	552.284
PRESS RELEASE CONTRIBUTION TO BFP 01/07/2015 - 07/07/2015 (SA c/l)	703.650	688.650	642.630	646.030	629.128
UNIT OVER/(UNDER) RECOVERY (SA c/l) - 07/07/2015	49.275	49.474	77.604	74.540	76.844
AVERAGE BASIC FUEL PRICE 26/06/2015 - 07/07/2015	663.272	647.835	596.925	603.591	587.489
AVERAGE UNIT OVER/(UNDER) RECOVERY 26/06/2015 - 07/07/2015	25.003	24.315	44.205	40.939	39.389

### ANALYSIS MOVEMENT OF AVERAGE OVER/(UNDER) RECOVERY

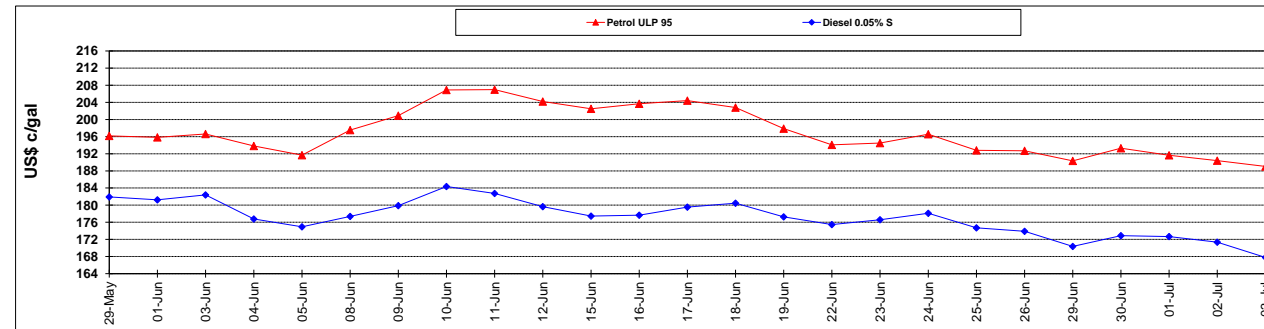
	PETROL 95	PETROL 93	DIESEL 0.05%	DIESEL 0.005%	ILL. PAR.
- MOVEMENT IN INTERNATIONAL PRODUCT PRICES	23.611	22.955	42.952	39.672	38.156
- MOVEMENT IN EXCHANGE RATE	1.392	1.360	1.253	1.267	1.233
AVERAGE UNIT OVER/(UNDER) RECOVERY 26/06/2015 - 07/07/2015	25.003	24.315	44.205	40.939	39.389

**R/\$ EXCHANGE RATE - (R/\$ 12.4847 - 07/07/2015)**

### EXCHANGE RATE USED IN BASIC FUEL PRICE



### INTERNATIONAL PRODUCT PRICES OF BASKET USED IN BASIC FUEL PRICE



### BASIC FUEL PRICE IN SA CENTS PER LITRE

