

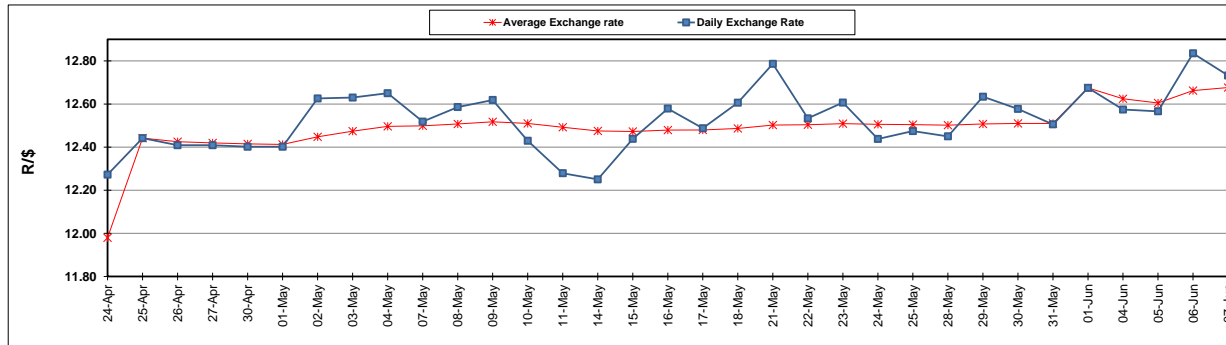
	PETROL 95 ULP	PETROL 93 ULP & LRP	DIESEL 0.05%	DIESEL 0.005%	ILL. PAR.
GAUTENG PUMP PRICE (SA c/l) AS FROM 06/06/2018	1 579.000	1 554.000	-	-	-
WHOLESALE PRICE (SA c/l) AS FROM 06/06/2018	-	-	1 418.830	1 425.230	927.088
SINGLE NATIONAL MAXIMUM RETAIL PRICE	-	-	-	-	1 198.000
BASIC FUEL PRICE - 07/06/2018 (SA c/l)	719.085	707.280	734.931	738.650	736.845
PRESS RELEASE CONTRIBUTION TO BFP 06/06/2018 - 07/06/2018 (SA c/l)	727.070	712.070	745.630	752.030	754.128
UNIT OVER/(UNDER) RECOVERY - 07/06/2018 (SA c/l)	7.985	4.790	10.699	13.380	17.283
AVERAGE BASIC FUEL PRICE 01/06/2018 - 07/06/2018	718.292	705.638	733.635	738.036	735.335
AVERAGE UNIT OVER/(UNDER) RECOVERY 01/06/2018 - 07/06/2018	(40.422)	(42.768)	(39.005)	(38.206)	(30.407)

ANALYSIS MOVEMENT OF AVERAGE OVER/(UNDER) RECOVERY

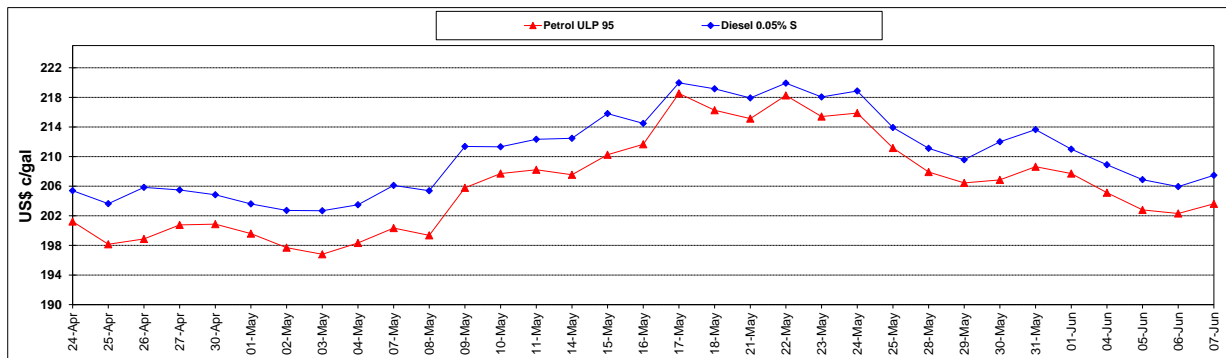
	PETROL 95	PETROL 93	DIESEL 0.05%	DIESEL 0.005%	ILL. PAR.
- MOVEMENT IN INTERNATIONAL PRODUCT PRICES	(30.982)	(33.494)	(29.363)	(28.506)	(20.743)
- MOVEMENT IN EXCHANGE RATE	(9.440)	(9.274)	(9.642)	(9.700)	(9.664)
AVERAGE UNIT OVER/(UNDER) RECOVERY 01/06/2018 - 07/06/2018	(40.422)	(42.768)	(39.005)	(38.206)	(30.407)

R/\$ EXCHANGE RATE - (R/\$12.7323 - 07/06/2018)

EXCHANGE RATE USED IN BASIC FUEL PRICE



INTERNATIONAL PRODUCT PRICES OF BASKET USED IN BASIC FUEL PRICE



BASIC FUEL PRICE IN SA CENTS PER LITRE

