

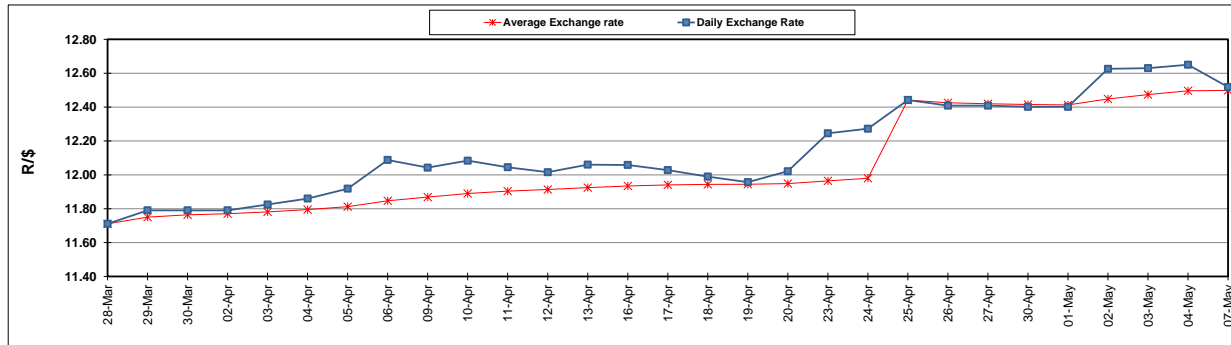
	PETROL 95 ULP	PETROL 93 ULP & LRP	DIESEL 0.05%	DIESEL 0.005%	ILL. PAR.
GAUTENG PUMP PRICE (SA c/l) AS FROM 02/05/2018	1 497.000	1 472.000	-	-	-
WHOLESALE PRICE (SA c/l) AS FROM 02/05/2018	-	-	1 333.830	1 338.230	845.088
SINGLE NATIONAL MAXIMUM RETAIL PRICE	-	-	-	-	1 089.000
BASIC FUEL PRICE - 07/05/2018 (SA c/l)	697.620	687.076	719.615	725.734	730.167
PRESS RELEASE CONTRIBUTION TO BFP 02/05/2018 - 07/05/2018 (SA c/l)	645.070	630.070	660.630	665.030	672.128
UNIT OVER/(UNDER) RECOVERY - 07/05/2018 (SA c/l)	(52.550)	(57.006)	(58.985)	(60.704)	(58.039)
AVERAGE BASIC FUEL PRICE 25/04/2018 - 07/05/2018	692.893	679.258	713.136	718.599	727.015
AVERAGE UNIT OVER/(UNDER) RECOVERY 25/04/2018 - 07/05/2018	(75.045)	(76.410)	(85.284)	(85.791)	(83.776)

### ANALYSIS MOVEMENT OF AVERAGE OVER/(UNDER) RECOVERY

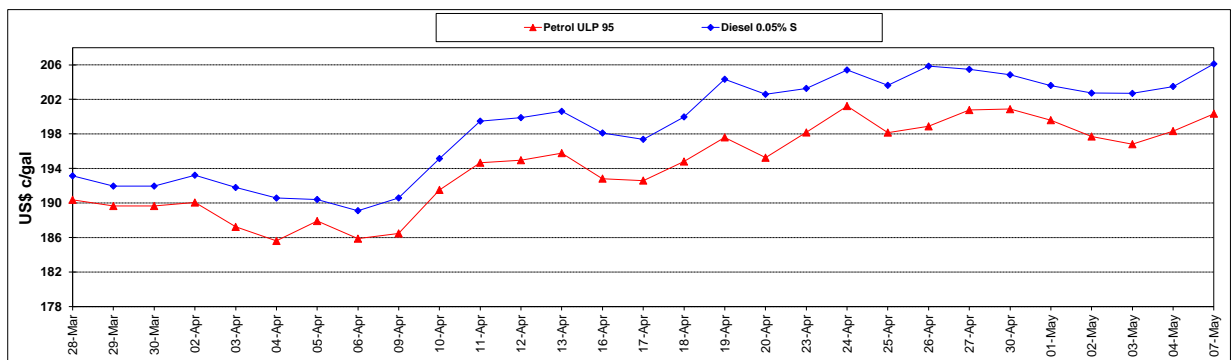
	PETROL 95	PETROL 93	DIESEL 0.05%	DIESEL 0.005%	ILL. PAR.
- MOVEMENT IN INTERNATIONAL PRODUCT PRICES	(46.278)	(48.209)	(55.677)	(55.957)	(53.593)
- MOVEMENT IN EXCHANGE RATE	(28.767)	(28.201)	(29.607)	(29.834)	(30.183)
AVERAGE UNIT OVER/(UNDER) RECOVERY 25/04/2018 - 07/05/2018	(75.045)	(76.410)	(85.284)	(85.791)	(83.776)

### R/\$ EXCHANGE RATE - (R/\$12.5185 - 07/05/2018)

#### EXCHANGE RATE USED IN BASIC FUEL PRICE



#### INTERNATIONAL PRODUCT PRICES OF BASKET USED IN BASIC FUEL PRICE



#### BASIC FUEL PRICE IN SA CENTS PER LITRE

