

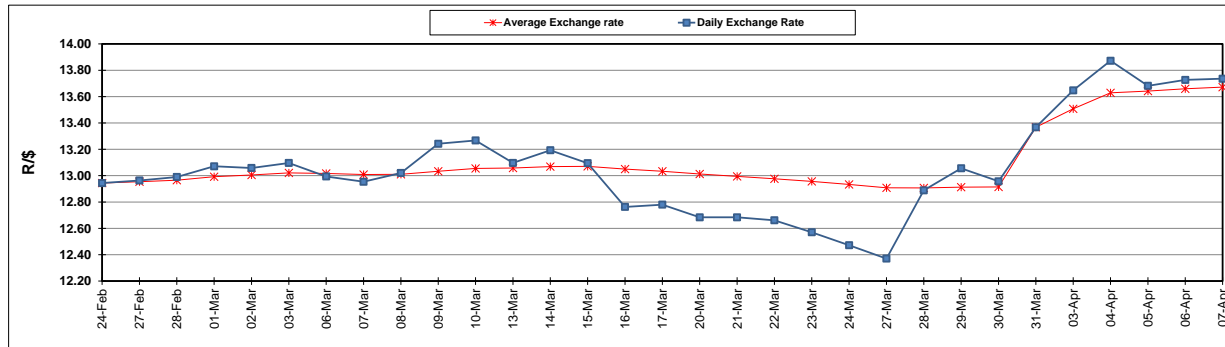
	PETROL 95 ULP	PETROL 93 ULP & LRP	DIESEL 0.05%	DIESEL 0.005%	ILL. PAR.
GAUTENG PUMP PRICE (SA c/l) AS FROM 05/04/2017	1 330.000	1 308.000	-	-	-
WHOLESALE PRICE (SA c/l) AS FROM 05/04/2017	-	-	1 150.330	1 152.730	702.088
SINGLE NATIONAL MAXIMUM RETAIL PRICE	-	-	-	-	901.000
BASIC FUEL PRICE - 07/04/2017 (SA c/l)	625.649	608.456	594.206	598.093	592.223
PRESS RELEASE CONTRIBUTION TO BFP 05/04/2017 - 07/04/2017 (SA c/l)	548.670	536.670	538.630	541.030	531.128
UNIT OVER/(UNDER) RECOVERY (SA c/l) - 07/04/2017	(76.979)	(71.786)	(55.576)	(57.063)	(61.095)
AVERAGE BASIC FUEL PRICE 31/03/2017 - 07/04/2017	610.452	593.229	576.064	580.109	574.902
AVERAGE UNIT OVER/(UNDER) RECOVERY 31/03/2017- 07/04/2017	(29.682)	(25.459)	(12.434)	(14.079)	(17.774)

ANALYSIS MOVEMENT OF AVERAGE OVER/(UNDER) RECOVERY

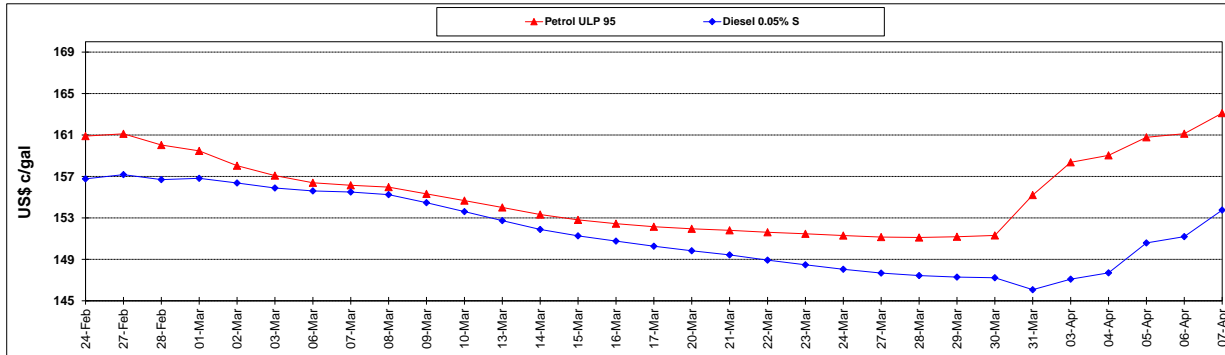
	PETROL 95	PETROL 93	DIESEL 0.05%	DIESEL 0.005%	ILL. PAR.
- MOVEMENT IN INTERNATIONAL PRODUCT PRICES	4.131	7.400	19.474	18.053	14.070
- MOVEMENT IN EXCHANGE RATE	(33.813)	(32.859)	(31.908)	(32.132)	(31.844)
AVERAGE UNIT OVER/(UNDER) RECOVERY 31/03/2017 - 07/04/2017	(29.682)	(25.459)	(12.434)	(14.079)	(17.774)

R/\$ EXCHANGE RATE - (R/\$ 13.7360 - 07/04/2017)

EXCHANGE RATE USED IN BASIC FUEL PRICE



INTERNATIONAL PRODUCT PRICES OF BASKET USED IN BASIC FUEL PRICE



BASIC FUEL PRICE IN SA CENTS PER LITRE

