

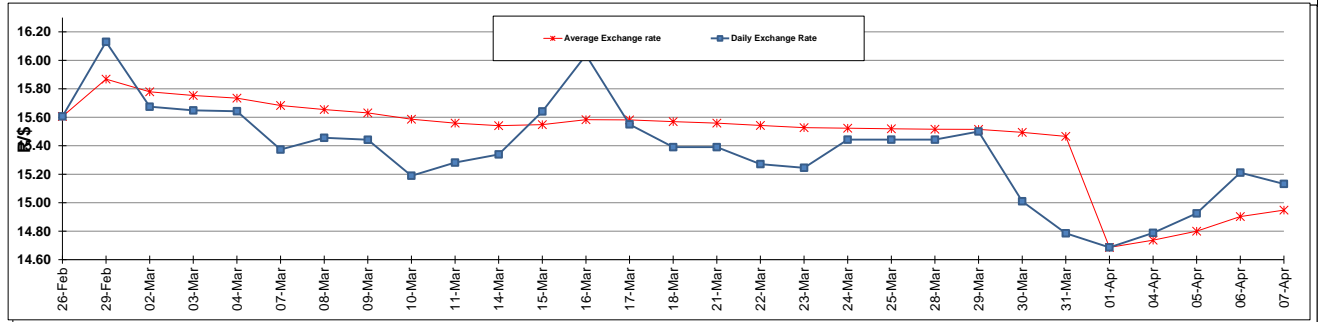
	PETROL 95 ULP	PETROL 93 ULP & LRP	DIESEL 0.05%	DIESEL 0.005%	ILL. PAR.
GAUTENG PUMP PRICE (SA c/l) AS FROM 06/04/2016	1 262.000	1 232.000	-	-	-
WHOLESALE PRICE (SA c/l) AS FROM 06/04/2016	-	-	1 053.870	1 059.270	662.628
SINGLE NATIONAL MAXIMUM RETAIL PRICE	-	-	-	-	848.000
BASIC FUEL PRICE - 07/04/2016 (SA c/l)	537.500	518.558	449.775	454.239	466.680
PRESS RELEASE CONTRIBUTION TO BFP 06/04/2016 - 07/04/2016 (SA c/l)	540.970	520.970	487.630	493.030	501.128
UNIT OVER/(UNDER) RECOVERY (SA c/l) - 07/04/2016	3.470	2.412	37.855	38.791	34.448
AVERAGE BASIC FUEL PRICE 01/04/2016 - 07/04/2016	527.863	509.664	437.954	442.280	459.128
AVERAGE UNIT OVER/(UNDER) RECOVERY 01/04/2016 - 07/04/2016	(18.693)	(19.294)	13.676	13.550	8.400

ANALYSIS MOVEMENT OF AVERAGE OVER/(UNDER) RECOVERY

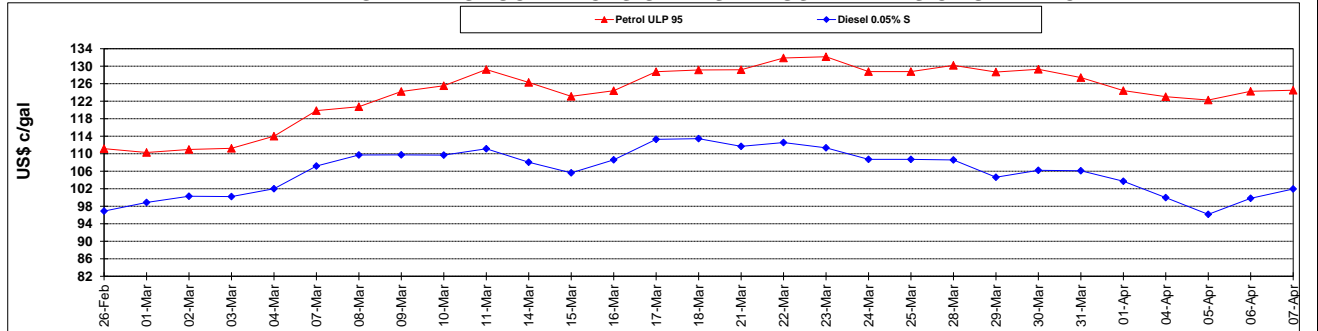
	PETROL 95	PETROL 93	DIESEL 0.05%	DIESEL 0.005%	ILL. PAR.
- MOVEMENT IN INTERNATIONAL PRODUCT PRICES	(36.957)	(36.928)	(1.477)	(1.753)	(7.485)
- MOVEMENT IN EXCHANGE RATE	18.264	17.634	15.153	15.303	15.885
AVERAGE UNIT OVER/(UNDER) RECOVERY 01/04/2016 - 07/04/2016	(18.693)	(19.294)	13.676	13.550	8.400

R/\$ EXCHANGE RATE - (R/\$ 15.1318 - 07/04/2016)

EXCHANGE RATE USED IN BASIC FUEL PRICE



INTERNATIONAL PRODUCT PRICES OF BASKET USED IN BASIC FUEL PRICE



BASIC FUEL PRICE IN SA CENTS PER LITRE

