

UPDATE OF THE BASIC FUEL PRICE

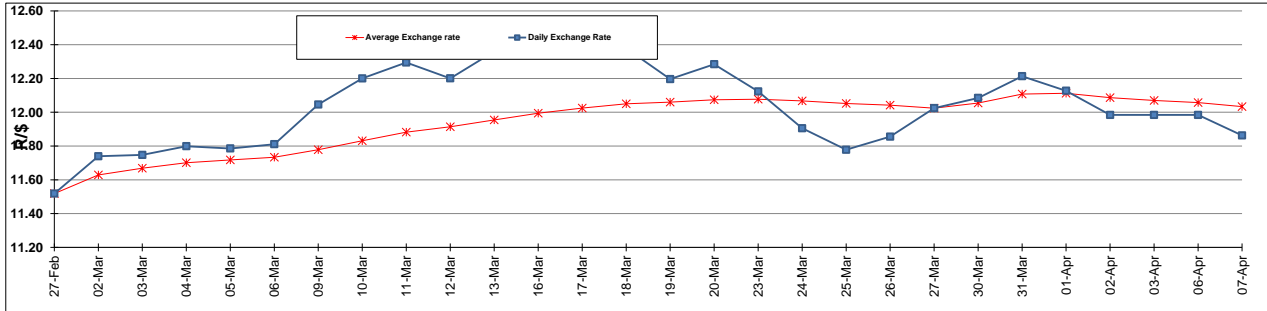
	PETROL 95 ULP	PETROL 93 ULP & LRP	DIESEL 0.05%	DIESEL 0.005%	ILL. PAR.
GAUTENG PUMP PRICE (SA c/l) AS FROM 03/04/2015	1,289.000	1,261.000	-	-	-
WHOLESALE PRICE (SA c/l) AS FROM 03/04/2015	-	-	1,122.790	1,129.190	743.828
SINGLE NATIONAL MAXIMUM RETAIL PRICE	-	-	-	-	957.000
BASIC FUEL PRICE - 07/04/2015 (SA c/l)	575.668	561.884	561.184	566.811	556.536
PRESS RELEASE CONTRIBUTION TO BFP 07/04/2015 - 07/04/2015 (SA c/l)	615.650	597.650	594.630	601.030	586.128
UNIT OVER/(UNDER) RECOVERY (SA c/l) - 07/04/2015	39.982	35.766	33.446	34.219	29.592
AVERAGE BASIC FUEL PRICE 27/03/2015 - 07/04/2015	581.420	565.485	563.277	569.433	559.456
AVERAGE UNIT OVER/(UNDER) RECOVERY 27/03/2015 - 07/04/2015	4.455	4.640	16.353	15.847	18.422

ANALYSIS MOVEMENT OF AVERAGE OVER/(UNDER) RECOVERY

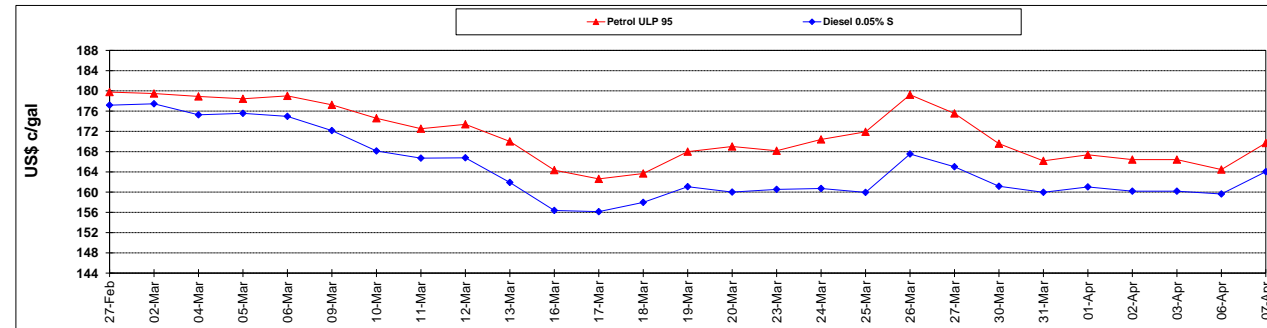
	PETROL 95	PETROL 93	DIESEL 0.05%	DIESEL 0.005%	ILL. PAR.
- MOVEMENT IN INTERNATIONAL PRODUCT PRICES	4.015	4.212	15.927	15.416	17.999
- MOVEMENT IN EXCHANGE RATE	0.440	0.428	0.426	0.431	0.423
AVERAGE UNIT OVER/(UNDER) RECOVERY 27/03/2015 - 07/04/2015	4.455	4.640	16.353	15.847	18.422

R/\$ EXCHANGE RATE - (R/\$ 11.8630 - 07/04/2015)

EXCHANGE RATE USED IN BASIC FUEL PRICE



INTERNATIONAL PRODUCT PRICES OF BASKET USED IN BASIC FUEL PRICE



BASIC FUEL PRICE IN SA CENTS PER LITRE

