

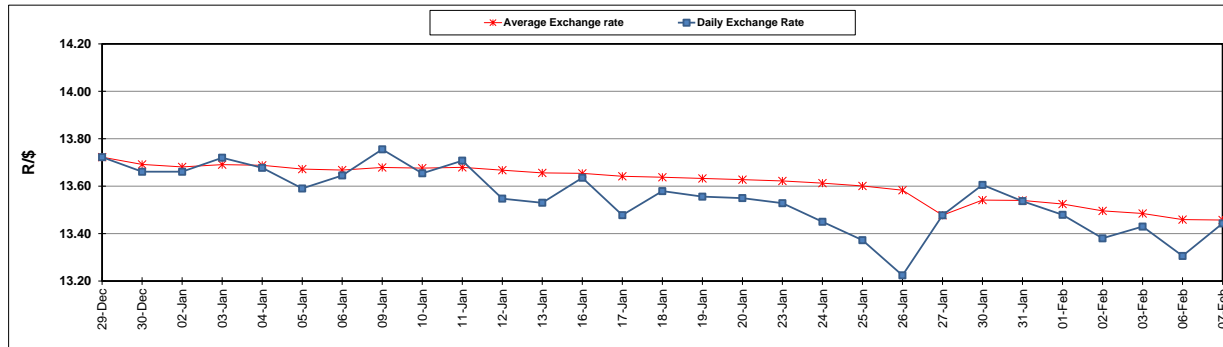
	PETROL 95 ULP	PETROL 93 ULP & LRP	DIESEL 0.05%	DIESEL 0.005%	ILL. PAR.
GAUTENG PUMP PRICE (SA c/l) AS FROM 01/02/2017	1 362.000	1 338.000	-	-	-
WHOLESALE PRICE (SA c/l) AS FROM 01/02/2017	-	-	1 162.830	1 165.230	758.588
SINGLE NATIONAL MAXIMUM RETAIL PRICE	-	-	-	-	976.000
BASIC FUEL PRICE - 07/02/2017 (SA c/l)	609.591	594.176	588.857	591.125	582.912
PRESS RELEASE CONTRIBUTION TO BFP 01/02/2017 - 07/02/2017 (SA c/l)	620.870	606.870	590.630	593.030	591.128
UNIT OVER/(UNDER) RECOVERY (SA c/l) - 07/02/2017	11.279	12.694	1.773	1.905	8.216
AVERAGE BASIC FUEL PRICE 27/01/2017 - 07/02/2017	616.241	600.907	590.452	592.563	584.479
AVERAGE UNIT OVER/(UNDER) RECOVERY 27/01/2017- 07/02/2017	(6.246)	(4.912)	(7.697)	(7.408)	0.274

ANALYSIS MOVEMENT OF AVERAGE OVER/(UNDER) RECOVERY

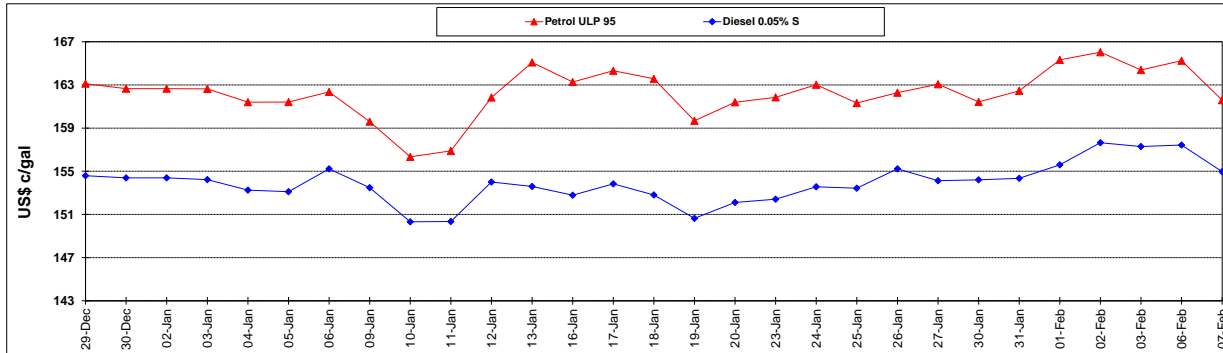
	PETROL 95	PETROL 93	DIESEL 0.05%	DIESEL 0.005%	ILL. PAR.
- MOVEMENT IN INTERNATIONAL PRODUCT PRICES	(12.007)	(10.529)	(13.217)	(12.947)	(5.190)
- MOVEMENT IN EXCHANGE RATE	5.761	5.617	5.520	5.539	5.464
AVERAGE UNIT OVER/(UNDER) RECOVERY 27/01/2017 - 07/02/2017	(6.246)	(4.912)	(7.697)	(7.408)	0.274

R/\$ EXCHANGE RATE - (R/\$ 13.4430 - 07/02/2017)

EXCHANGE RATE USED IN BASIC FUEL PRICE



INTERNATIONAL PRODUCT PRICES OF BASKET USED IN BASIC FUEL PRICE



BASIC FUEL PRICE IN SA CENTS PER LITRE

