

UPDATE OF THE BASIC FUEL PRICE

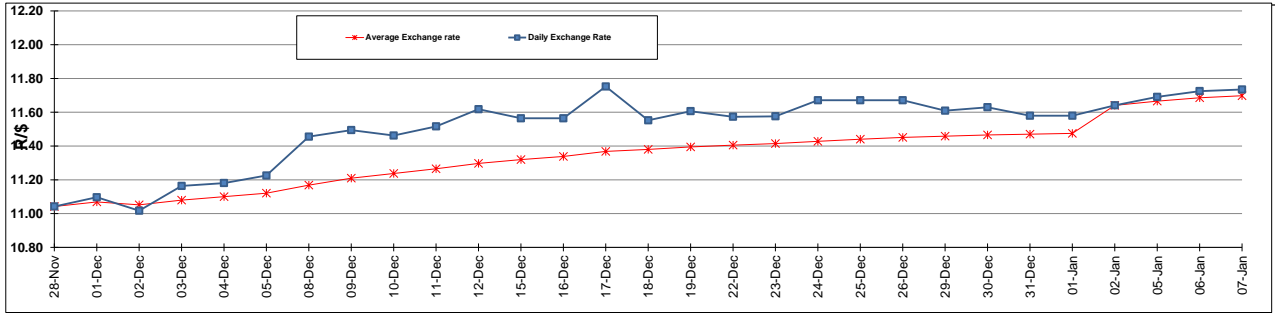
	PETROL 95 ULP	PETROL 93 ULP & LRP	DIESEL 0.05%	DIESEL 0.005%	ILL. PAR.
GAUTENG PUMP PRICE (SA c/l) AS FROM 07/01/2015	1,124.000	1,102.000	-	-	-
WHOLESALE PRICE (SA c/l) AS FROM 07/01/2015	-	-	1,028.090	1,032.490	747.928
SINGLE NATIONAL MAXIMUM RETAIL PRICE	-	-	-	-	969.000
BASIC FUEL PRICE - 07/01/2015 (SA c/l)	464.985	453.081	509.258	513.772	516.376
PRESS RELEASE CONTRIBUTION TO BFP 07/01/2015 - 07/01/2015 (SA c/l)	533.250	521.250	582.630	587.030	593.128
UNIT OVER/(UNDER) RECOVERY (SA c/l) - 07/01/2015	68.265	68.169	73.372	73.258	76.752
AVERAGE BASIC FUEL PRICE 02/01/2015 - 07/01/2015	484.797	472.704	530.465	534.519	536.144
AVERAGE UNIT OVER/(UNDER) RECOVERY 02/01/2015 - 07/01/2015	140.703	143.796	130.166	131.262	137.984

ANALYSIS MOVEMENT OF AVERAGE OVER/(UNDER) RECOVERY

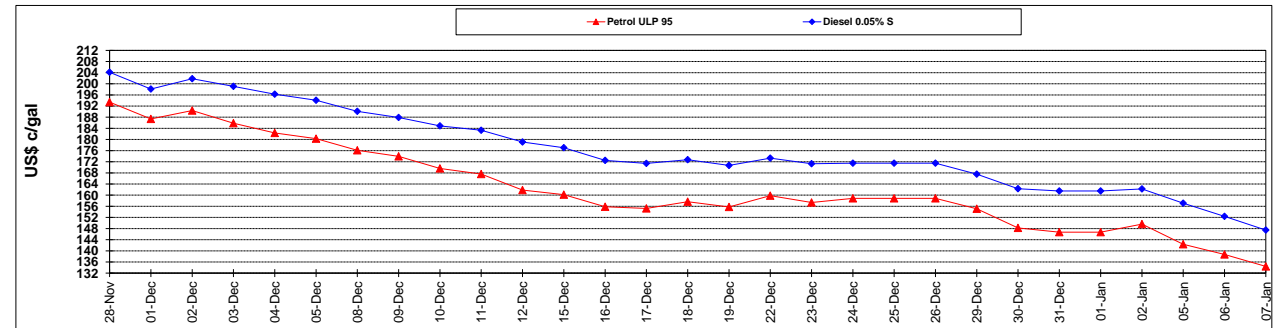
	PETROL 95	PETROL 93	DIESEL 0.05%	DIESEL 0.005%	ILL. PAR.
- MOVEMENT IN INTERNATIONAL PRODUCT PRICES	149.945	152.807	140.277	141.451	148.205
- MOVEMENT IN EXCHANGE RATE	(9.242)	(9.011)	(10.112)	(10.190)	(10.221)
AVERAGE UNIT OVER/(UNDER) RECOVERY 02/01/2015 - 07/01/2015	140.703	143.796	130.166	131.262	137.984

R/\$ EXCHANGE RATE - (R/\$ 11.7348 - 07/01/2015)

EXCHANGE RATE USED IN BASIC FUEL PRICE



INTERNATIONAL PRODUCT PRICES OF BASKET USED IN BASIC FUEL PRICE



BASIC FUEL PRICE IN SA CENTS PER LITRE

