

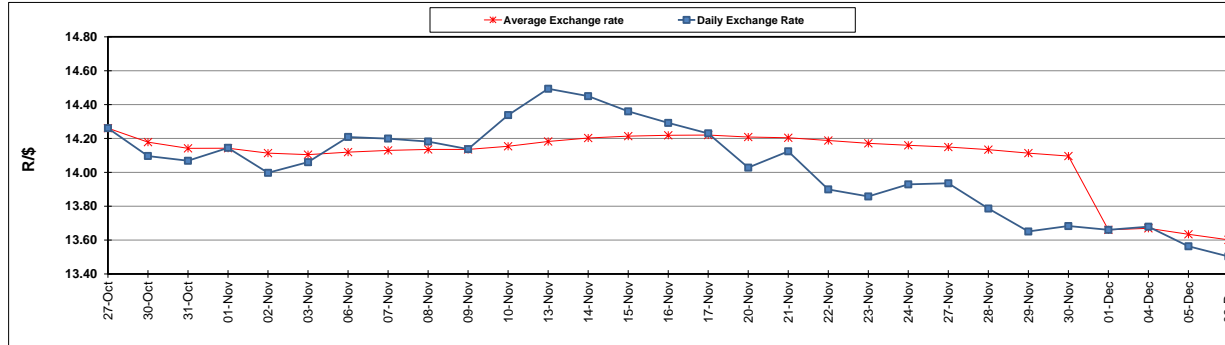
	PETROL 95 ULP	PETROL 93 ULP & LRP	DIESEL 0.05%	DIESEL 0.005%	ILL. PAR.
GAUTENG PUMP PRICE (SA c/l) AS FROM 06/12/2017	1 476.000	1 449.000	-	-	-
WHOLESALE PRICE (SA c/l) AS FROM 06/12/2017	-	-	1 295.630	1 302.030	865.388
SINGLE NATIONAL MAXIMUM RETAIL PRICE	-	-	-	-	1 119.000
BASIC FUEL PRICE - 06/12/2017 (SA c/l)	642.769	629.511	650.287	653.643	653.742
PRESS RELEASE CONTRIBUTION TO BFP 05/12/2017 - 06/12/2017 (SA c/l)	686.170	669.170	684.630	691.030	695.128
UNIT OVER/(UNDER) RECOVERY - 06/12/2017 (SA c/l)	43.401	39.659	34.343	37.387	41.386
AVERAGE BASIC FUEL PRICE 01/12/2017 - 06/12/2017	653.860	639.900	658.690	662.463	663.653
AVERAGE UNIT OVER/(UNDER) RECOVERY 01/12/2017 - 06/12/2017	(18.015)	(21.055)	(19.810)	(14.933)	(24.025)

ANALYSIS MOVEMENT OF AVERAGE OVER/(UNDER) RECOVERY

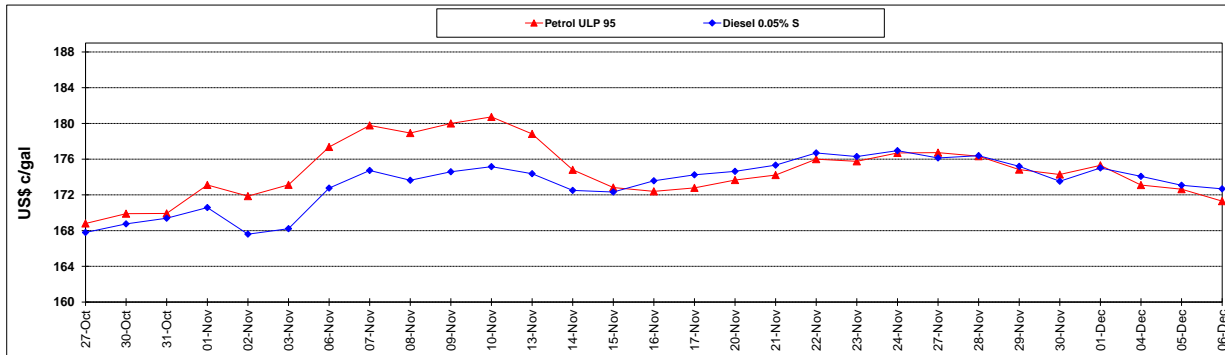
	PETROL 95	PETROL 93	DIESEL 0.05%	DIESEL 0.005%	ILL. PAR.
- MOVEMENT IN INTERNATIONAL PRODUCT PRICES	(41.801)	(44.333)	(43.772)	(39.032)	(48.167)
- MOVEMENT IN EXCHANGE RATE	23.786	23.278	23.962	24.099	24.142
AVERAGE UNIT OVER/(UNDER) RECOVERY 01/12/2017 - 06/12/2017	(18.015)	(21.055)	(19.810)	(14.933)	(24.025)

R/\$ EXCHANGE RATE - (R/\$ 13.5033 - 06/12/2017)

EXCHANGE RATE USED IN BASIC FUEL PRICE



INTERNATIONAL PRODUCT PRICES OF BASKET USED IN BASIC FUEL PRICE



BASIC FUEL PRICE IN SA CENTS PER LITRE

