

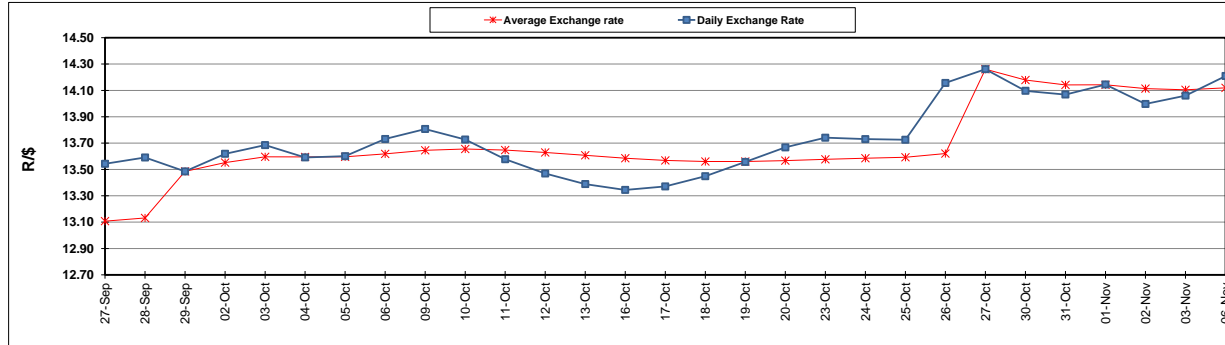
	PETROL 95 ULP	PETROL 93 ULP & LRP	DIESEL 0.05%	DIESEL 0.005%	ILL. PAR.
GAUTENG PUMP PRICE (SA c/l) AS FROM 01/11/2017	1 405.000	1 378.000	-	-	-
WHOLESALE PRICE (SA c/l) AS FROM 01/11/2017	-	-	1 235.330	1 244.730	792.088
SINGLE NATIONAL MAXIMUM RETAIL PRICE	-	-	-	-	1 021.000
BASIC FUEL PRICE - 06/11/2017 (SA c/l)	701.212	684.203	686.745	694.582	700.171
PRESS RELEASE CONTRIBUTION TO BFP 01/11/2017 - 06/11/2017 (SA c/l)	619.070	602.070	623.630	633.030	621.128
UNIT OVER/(UNDER) RECOVERY (SA c/l) - 06/11/2017	(82.142)	(82.133)	(63.115)	(61.552)	(79.043)
AVERAGE BASIC FUEL PRICE 27/10/2017 - 06/11/2017	675.317	659.344	667.906	676.254	675.735
AVERAGE UNIT OVER/(UNDER) RECOVERY 27/10/2017 - 06/11/2017	(57.961)	(58.988)	(54.134)	(54.795)	(63.607)

ANALYSIS MOVEMENT OF AVERAGE OVER/(UNDER) RECOVERY

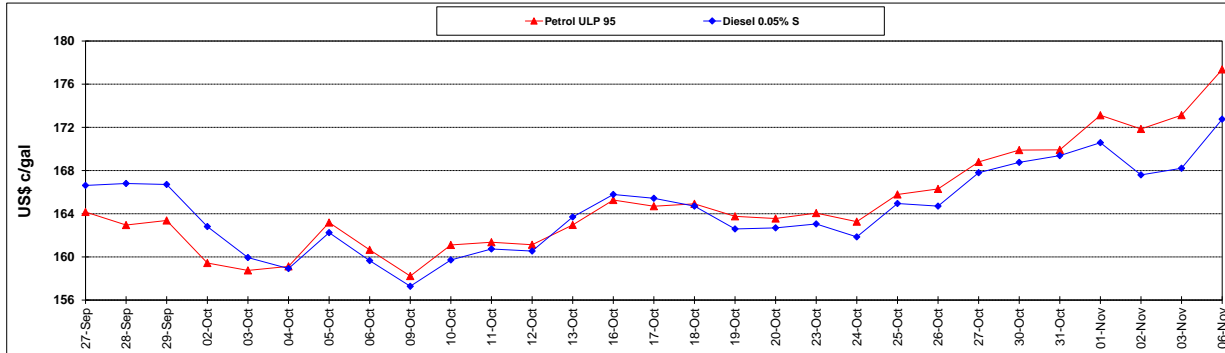
	PETROL 95	PETROL 93	DIESEL 0.05%	DIESEL 0.005%	ILL. PAR.
- MOVEMENT IN INTERNATIONAL PRODUCT PRICES	(34.123)	(35.714)	(30.557)	(30.924)	(39.754)
- MOVEMENT IN EXCHANGE RATE	(23.838)	(23.274)	(23.576)	(23.871)	(23.853)
AVERAGE UNIT OVER/(UNDER) RECOVERY 27/10/2017 - 06/11/2017	(57.961)	(58.988)	(54.134)	(54.795)	(63.607)

R/\$ EXCHANGE RATE - (R/\$ 14.2088 - 06/11/2017)

EXCHANGE RATE USED IN BASIC FUEL PRICE



INTERNATIONAL PRODUCT PRICES OF BASKET USED IN BASIC FUEL PRICE



BASIC FUEL PRICE IN SA CENTS PER LITRE

