

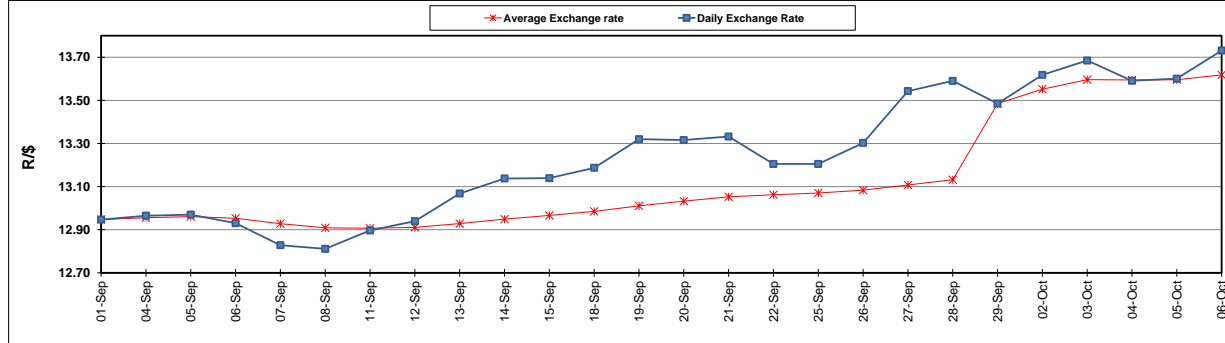
	PETROL 95 ULP	PETROL 93 ULP & LRP	DIESEL 0.05%	DIESEL 0.005%	ILL. PAR.
GAUTENG PUMP PRICE (SA c/l) AS FROM 04/10/2017	1 401.000	1 374.000	-	-	-
WHOLESALE PRICE (SA c/l) AS FROM 04/10/2017	-	-	1 212.330	1 217.730	771.088
SINGLE NATIONAL MAXIMUM RETAIL PRICE	-	-	-	-	992.000
BASIC FUEL PRICE - 06/10/2017 (SA c/l)	613.643	597.038	612.460	620.893	611.050
PRESS RELEASE CONTRIBUTION TO BFP 04/10/2017 - 06/10/2017 (SA c/l)	615.070	598.070	600.630	606.030	600.128
UNIT OVER/(UNDER) RECOVERY (SA c/l) - 06/10/2017	1.427	1.032	(11.830)	(14.863)	(10.922)
AVERAGE BASIC FUEL PRICE 29/09/2017 - 06/10/2017	609.134	592.904	615.045	625.044	612.295
AVERAGE UNIT OVER/(UNDER) RECOVERY 29/09/2017 - 06/10/2017	(8.564)	(7.334)	(35.415)	(40.014)	(31.667)

### ANALYSIS MOVEMENT OF AVERAGE OVER/(UNDER) RECOVERY

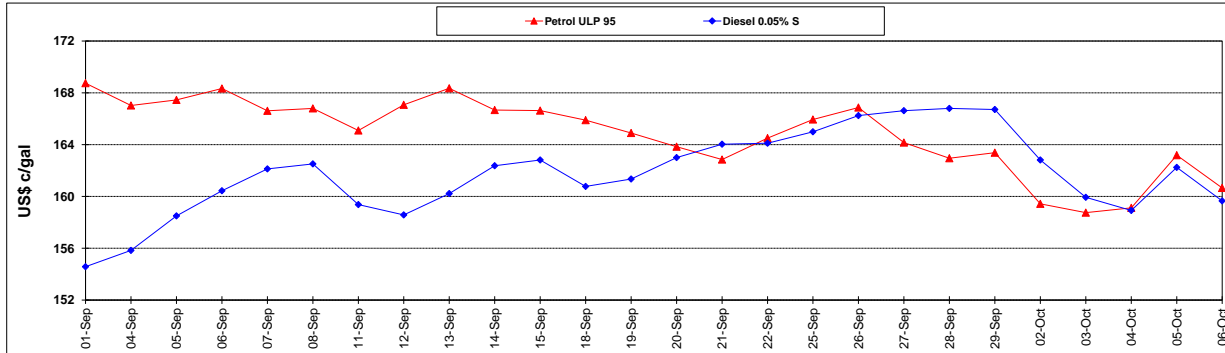
	PETROL 95	PETROL 93	DIESEL 0.05%	DIESEL 0.005%	ILL. PAR.
- MOVEMENT IN INTERNATIONAL PRODUCT PRICES	13.205	13.855	(13.434)	(17.676)	(9.785)
- MOVEMENT IN EXCHANGE RATE	(21.769)	(21.189)	(21.981)	(22.338)	(21.882)
AVERAGE UNIT OVER/(UNDER) RECOVERY 29/09/2017 - 06/10/2017	(8.564)	(7.334)	(35.415)	(40.014)	(31.667)

R/\$ EXCHANGE RATE - (R/\$ 13.7310 - 06/10/2017)

### EXCHANGE RATE USED IN BASIC FUEL PRICE



### INTERNATIONAL PRODUCT PRICES OF BASKET USED IN BASIC FUEL PRICE



### BASIC FUEL PRICE IN SA CENTS PER LITRE

