

UPDATE OF THE BASIC FUEL PRICE

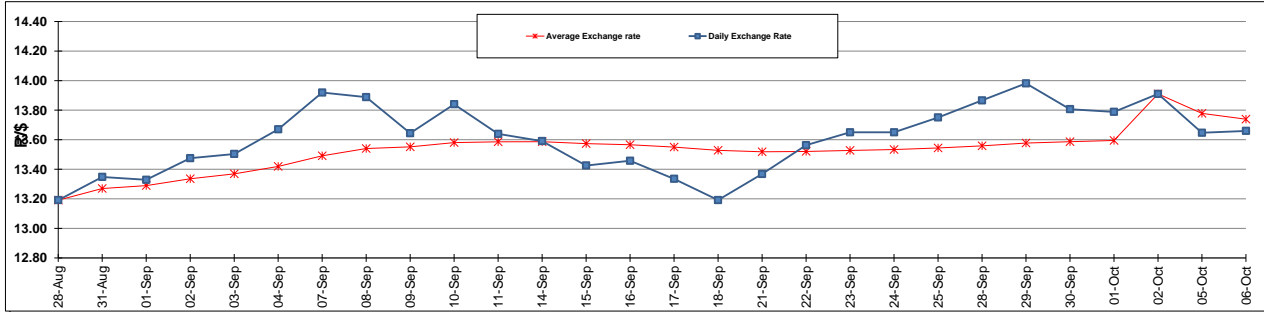
	PETROL 95 ULP	PETROL 93 ULP & LRP	DIESEL 0.05%	DIESEL 0.005%	ILL. PAR.
GAUTENG PUMP PRICE (SA c/l) AS FROM 07/10/2015	1,261.000	1,230.000	-	-	-
WHOLESALE PRICE (SA c/l) AS FROM 07/10/2015	-	-	1,093.970	1,100.370	711.828
SINGLE NATIONAL MAXIMUM RETAIL PRICE	-	-	-	-	914.000
BASIC FUEL PRICE - 06/10/2015 (SA c/l)	595.307	579.186	575.537	580.544	566.452
PRESS RELEASE CONTRIBUTION TO BFP 02/10/2015 - 06/10/2015 (SA c/l)	578.870	563.870	512.630	521.030	504.128
UNIT OVER/(UNDER) RECOVERY (SA c/l) - 06/10/2015	(16.437)	(15.316)	(62.907)	(59.514)	(62.324)
AVERAGE BASIC FUEL PRICE 02/10/2015 - 06/10/2015	589.820	572.846	567.082	572.475	559.150
AVERAGE UNIT OVER/(UNDER) RECOVERY 02/10/2015 - 06/10/2015	(10.950)	(8.976)	(54.452)	(51.445)	(55.022)

ANALYSIS MOVEMENT OF AVERAGE OVER/(UNDER) RECOVERY

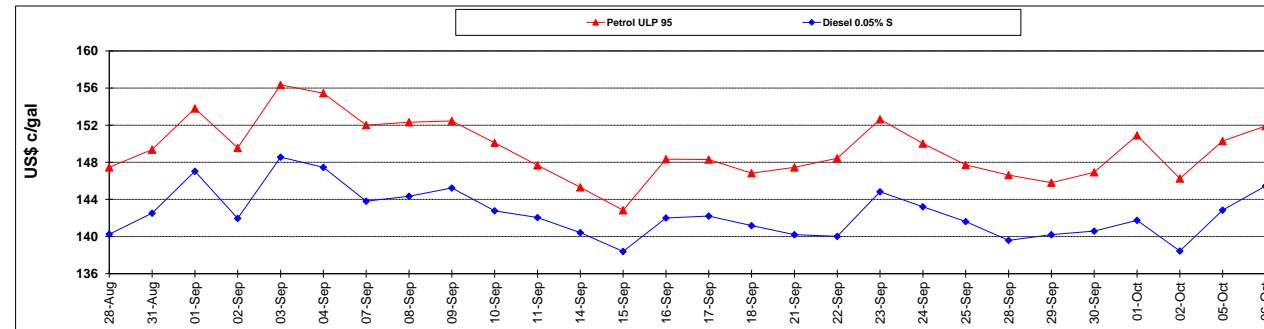
	PETROL 95	PETROL 93	DIESEL 0.05%	DIESEL 0.005%	ILL. PAR.
- MOVEMENT IN INTERNATIONAL PRODUCT PRICES	(4.768)	(2.972)	(48.508)	(45.445)	(49.161)
- MOVEMENT IN EXCHANGE RATE	(6.182)	(6.004)	(5.944)	(6.000)	(5.861)
AVERAGE UNIT OVER/(UNDER) RECOVERY 02/10/2015 - 06/10/2015	(10.950)	(8.976)	(54.452)	(51.445)	(55.022)

R/\$ EXCHANGE RATE - (R/\$ 13.6594- 06/10/2015)

EXCHANGE RATE USED IN BASIC FUEL PRICE



INTERNATIONAL PRODUCT PRICES OF BASKET USED IN BASIC FUEL PRICE



BASIC FUEL PRICE IN SA CENTS PER LITRE

