

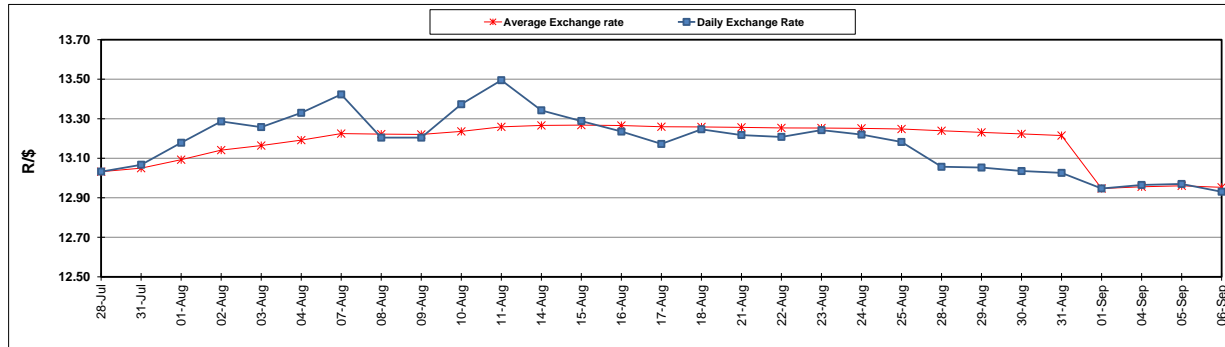
	PETROL 95 ULP	PETROL 93 ULP & LRP	DIESEL 0.05%	DIESEL 0.005%	ILL. PAR.
GAUTENG PUMP PRICE (SA c/l) AS FROM 06/09/2017	1 372.000	1 349.000	-	-	-
WHOLESALE PRICE (SA c/l) AS FROM 06/09/2017	-	-	1 170.330	1 175.730	732.088
SINGLE NATIONAL MAXIMUM RETAIL PRICE	-	-	-	-	941.000
BASIC FUEL PRICE - 06/09/2017 (SA c/l)	605.377	587.822	580.654	586.923	576.728
PRESS RELEASE CONTRIBUTION TO BFP 06/09/2017 - 06/09/2017 (SA c/l)	586.070	573.070	558.630	564.030	561.128
UNIT OVER/(UNDER) RECOVERY (SA c/l) - 06/09/2017	(19.307)	(14.752)	(22.024)	(22.893)	(15.600)
AVERAGE BASIC FUEL PRICE 01/09/2017 - 06/09/2017	604.890	589.260	571.025	576.670	571.534
AVERAGE UNIT OVER/(UNDER) RECOVERY 01/09/2017 - 06/09/2017	(65.620)	(62.990)	(45.395)	(45.640)	(47.156)

ANALYSIS MOVEMENT OF AVERAGE OVER/(UNDER) RECOVERY

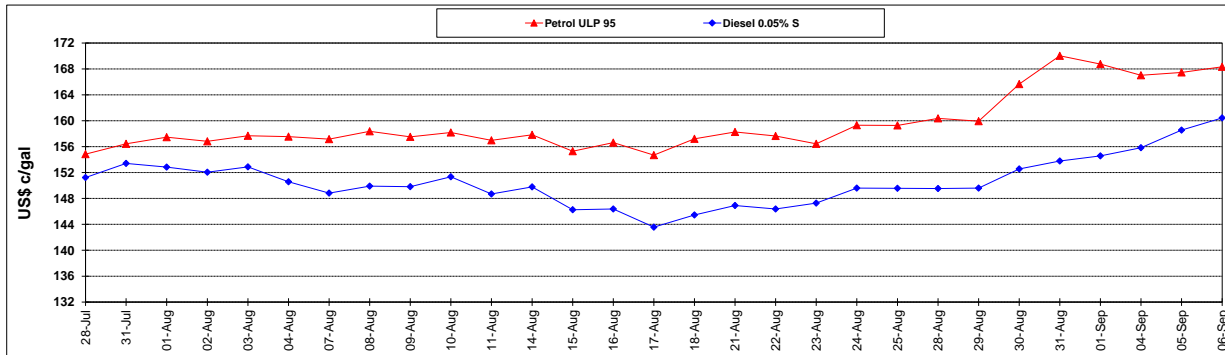
	PETROL 95	PETROL 93	DIESEL 0.05%	DIESEL 0.005%	ILL. PAR.
- MOVEMENT IN INTERNATIONAL PRODUCT PRICES	(77.860)	(74.913)	(56.949)	(57.309)	(58.721)
- MOVEMENT IN EXCHANGE RATE	12.240	11.923	11.554	11.669	11.565
AVERAGE UNIT OVER/(UNDER) RECOVERY 01/09/2017 - 06/09/2017	(65.620)	(62.990)	(45.395)	(45.640)	(47.156)

R/\$ EXCHANGE RATE - (R/\$ 12.9305 - 06/09/2017)

EXCHANGE RATE USED IN BASIC FUEL PRICE



INTERNATIONAL PRODUCT PRICES OF BASKET USED IN BASIC FUEL PRICE



BASIC FUEL PRICE IN SA CENTS PER LITRE

