

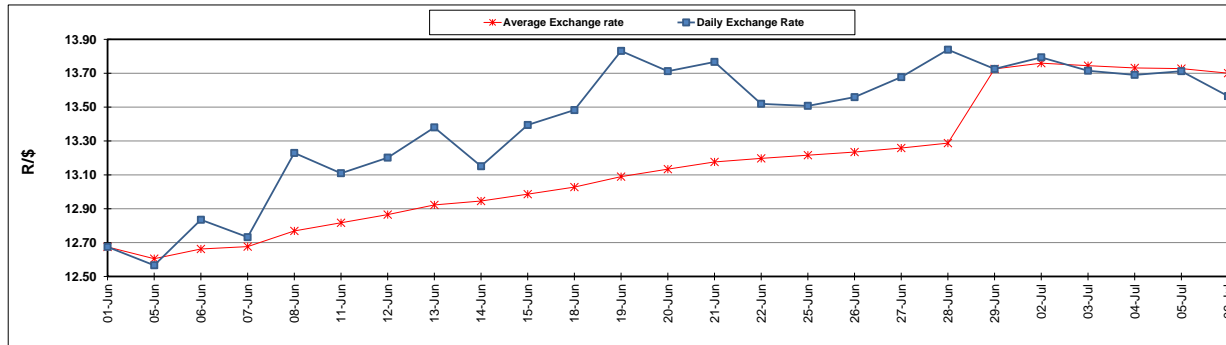
	PETROL 95 ULP	PETROL 93 ULP & LRP	DIESEL 0.05%	DIESEL 0.005%	ILL. PAR.
GAUTENG PUMP PRICE (SA c/l) AS FROM 04/07/2018	1 602.000	1 581.000	-	-	-
WHOLESALE PRICE (SA c/l) AS FROM 04/07/2018	-	-	1 444.830	1 449.230	949.088
SINGLE NATIONAL MAXIMUM RETAIL PRICE	-	-	-	-	1 228.000
BASIC FUEL PRICE - 06/07/2018 (SA c/l)	759.722	749.364	778.586	783.944	795.095
PRESS RELEASE CONTRIBUTION TO BFP 04/07/2018 - 06/07/2018 (SA c/l)	750.070	739.070	771.630	776.030	776.128
UNIT OVER/(UNDER) RECOVERY - 06/07/2018 (SA c/l)	(9.652)	(10.294)	(6.956)	(7.914)	(18.967)
AVERAGE BASIC FUEL PRICE 29/06/2018 - 06/07/2018	770.606	759.647	786.866	791.814	800.896
AVERAGE UNIT OVER/(UNDER) RECOVERY 29/06/2018 - 06/07/2018	(32.036)	(34.077)	(28.236)	(27.784)	(35.768)

ANALYSIS MOVEMENT OF AVERAGE OVER/(UNDER) RECOVERY

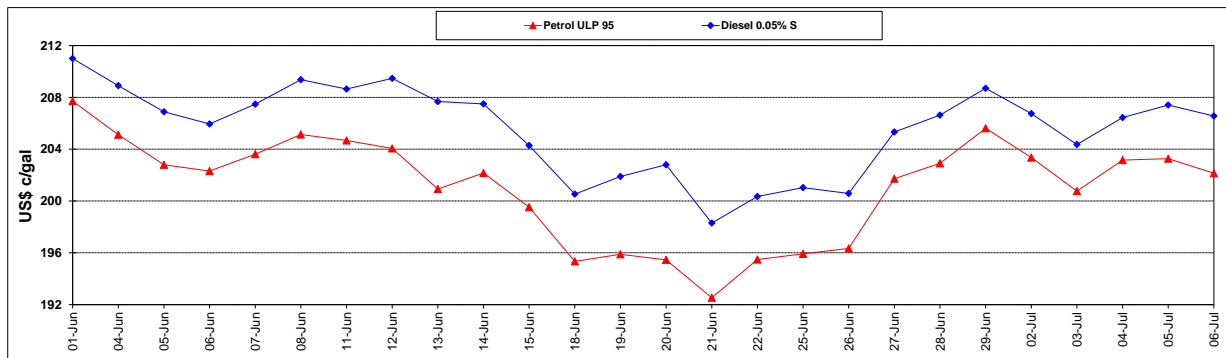
	PETROL 95	PETROL 93	DIESEL 0.05%	DIESEL 0.005%	ILL. PAR.
- MOVEMENT IN INTERNATIONAL PRODUCT PRICES	(8.805)	(11.177)	(4.515)	(3.914)	(11.624)
- MOVEMENT IN EXCHANGE RATE	(23.231)	(22.900)	(23.721)	(23.870)	(24.144)
AVERAGE UNIT OVER/(UNDER) RECOVERY 29/06/2018 - 06/07/2018	(32.036)	(34.077)	(28.236)	(27.784)	(35.768)

R/\$ EXCHANGE RATE - (R/\$13.5650 - 06/07/2018)

EXCHANGE RATE USED IN BASIC FUEL PRICE



INTERNATIONAL PRODUCT PRICES OF BASKET USED IN BASIC FUEL PRICE



BASIC FUEL PRICE IN SA CENTS PER LITRE

