

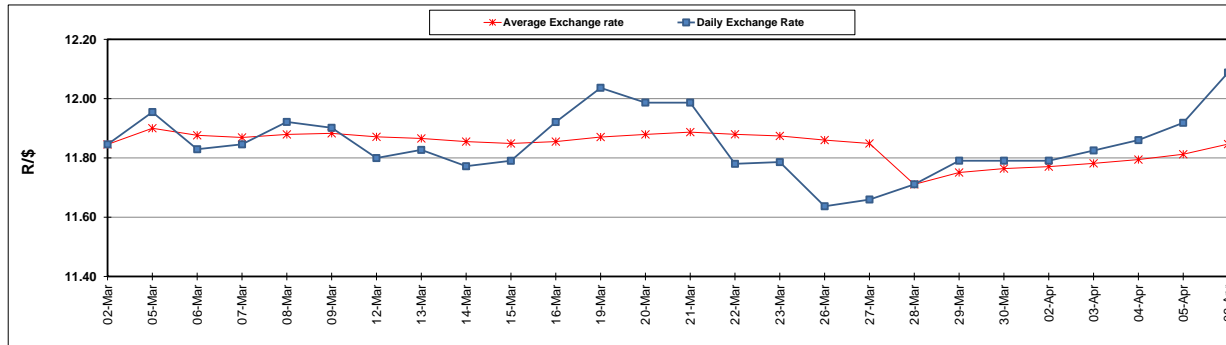
	PETROL 95 ULP	PETROL 93 ULP & LRP	DIESEL 0.05%	DIESEL 0.005%	ILL. PAR.
GAUTENG PUMP PRICE (SA c/l) AS FROM 07/03/2018	1 448.000	1 423.000	-	-	-
WHOLESALE PRICE (SA c/l) AS FROM 07/03/2018	-	-	1 274.830	1 280.230	793.088
SINGLE NATIONAL MAXIMUM RETAIL PRICE	-	-	-	-	1 026.000
BASIC FUEL PRICE - 06/04/2018 (SA c/l)	629.007	613.112	642.209	647.423	656.863
PRESS RELEASE CONTRIBUTION TO BFP 04/04/2018 - 06/04/2018 (SA c/l)	596.070	581.070	601.630	607.030	620.128
UNIT OVER/(UNDER) RECOVERY - 06/04/2018 (SA c/l)	(32.937)	(32.042)	(40.579)	(40.393)	(36.735)
AVERAGE BASIC FUEL PRICE 28/03/2018 - 06/04/2018	624.264	609.810	637.208	642.454	647.038
AVERAGE UNIT OVER/(UNDER) RECOVERY 28/03/2018 - 06/04/2018	(34.382)	(33.052)	(37.453)	(37.299)	(23.785)

ANALYSIS MOVEMENT OF AVERAGE OVER/(UNDER) RECOVERY

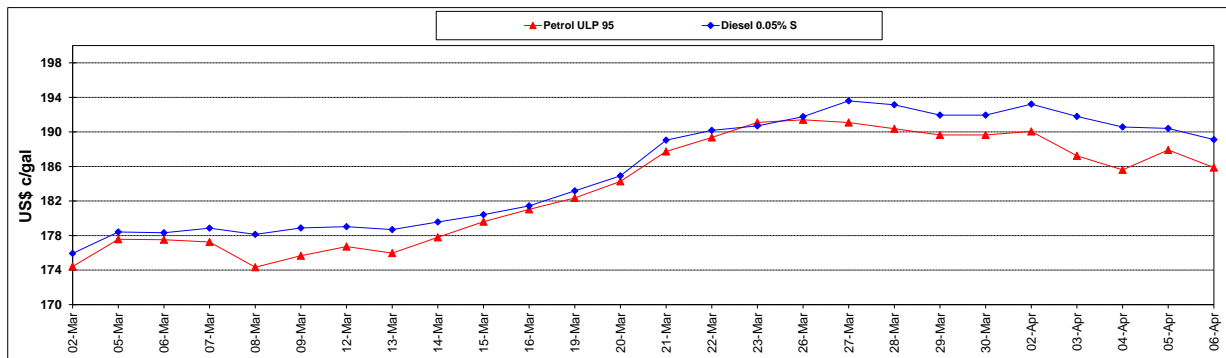
	PETROL 95	PETROL 93	DIESEL 0.05%	DIESEL 0.005%	ILL. PAR.
- MOVEMENT IN INTERNATIONAL PRODUCT PRICES	(34.497)	(33.165)	(37.571)	(37.418)	(23.905)
- MOVEMENT IN EXCHANGE RATE	0.116	0.113	0.118	0.119	0.120
AVERAGE UNIT OVER/(UNDER) RECOVERY 28/03/2018 - 06/04/2018	(34.382)	(33.052)	(37.453)	(37.299)	(23.785)

R/\$ EXCHANGE RATE - (R/\$12.0878 - 06/04/2018)

EXCHANGE RATE USED IN BASIC FUEL PRICE



INTERNATIONAL PRODUCT PRICES OF BASKET USED IN BASIC FUEL PRICE



BASIC FUEL PRICE IN SA CENTS PER LITRE

