

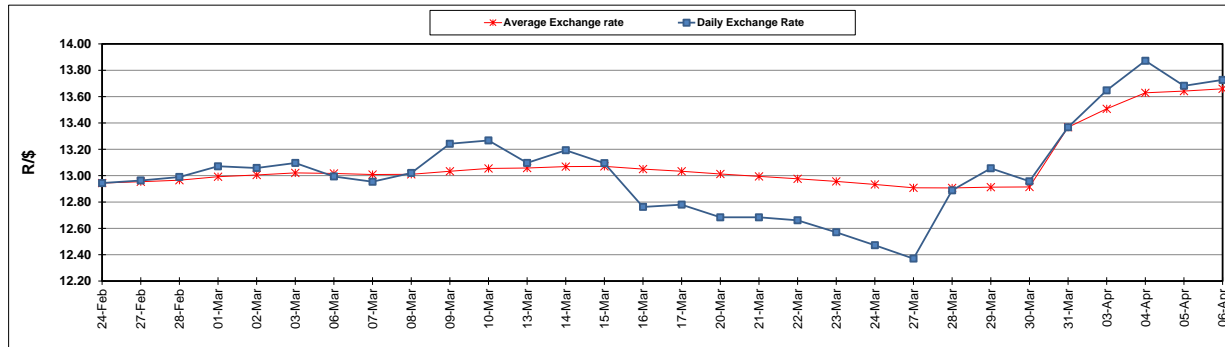
	PETROL 95 ULP	PETROL 93 ULP & LRP	DIESEL 0.05%	DIESEL 0.005%	ILL. PAR.
GAUTENG PUMP PRICE (SA c/l) AS FROM 06/04/2017	1 330.000	1 308.000	-	-	-
WHOLESALE PRICE (SA c/l) AS FROM 06/04/2017	-	-	1 150.330	1 152.730	702.088
SINGLE NATIONAL MAXIMUM RETAIL PRICE	-	-	-	-	901.000
BASIC FUEL PRICE - 06/04/2017 (SA c/l)	618.005	600.293	584.474	589.038	583.590
PRESS RELEASE CONTRIBUTION TO BFP 05/04/2017 - 06/04/2017 (SA c/l)	548.670	536.670	538.630	541.030	531.128
UNIT OVER/(UNDER) RECOVERY (SA c/l) - 06/04/2017	(69.335)	(63.623)	(45.844)	(48.008)	(52.462)
AVERAGE BASIC FUEL PRICE 31/03/2017 - 06/04/2017	607.412	590.184	572.436	576.512	571.438
AVERAGE UNIT OVER/(UNDER) RECOVERY 31/03/2017- 06/04/2017	(20.222)	(16.194)	(3.806)	(5.482)	(9.110)

ANALYSIS MOVEMENT OF AVERAGE OVER/(UNDER) RECOVERY

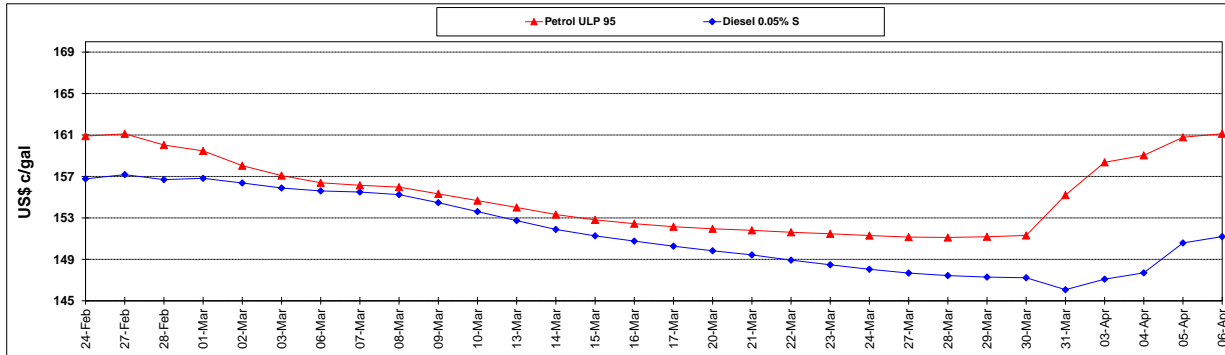
	PETROL 95	PETROL 93	DIESEL 0.05%	DIESEL 0.005%	ILL. PAR.
- MOVEMENT IN INTERNATIONAL PRODUCT PRICES	12.885	15.974	27.395	25.941	22.036
- MOVEMENT IN EXCHANGE RATE	(33.107)	(32.168)	(31.201)	(31.423)	(31.146)
AVERAGE UNIT OVER/(UNDER) RECOVERY 31/03/2017 - 06/04/2017	(20.222)	(16.194)	(3.806)	(5.482)	(9.110)

R/\$ EXCHANGE RATE - (R/\$ 13.7270 - 06/04/2017)

EXCHANGE RATE USED IN BASIC FUEL PRICE



INTERNATIONAL PRODUCT PRICES OF BASKET USED IN BASIC FUEL PRICE



BASIC FUEL PRICE IN SA CENTS PER LITRE

